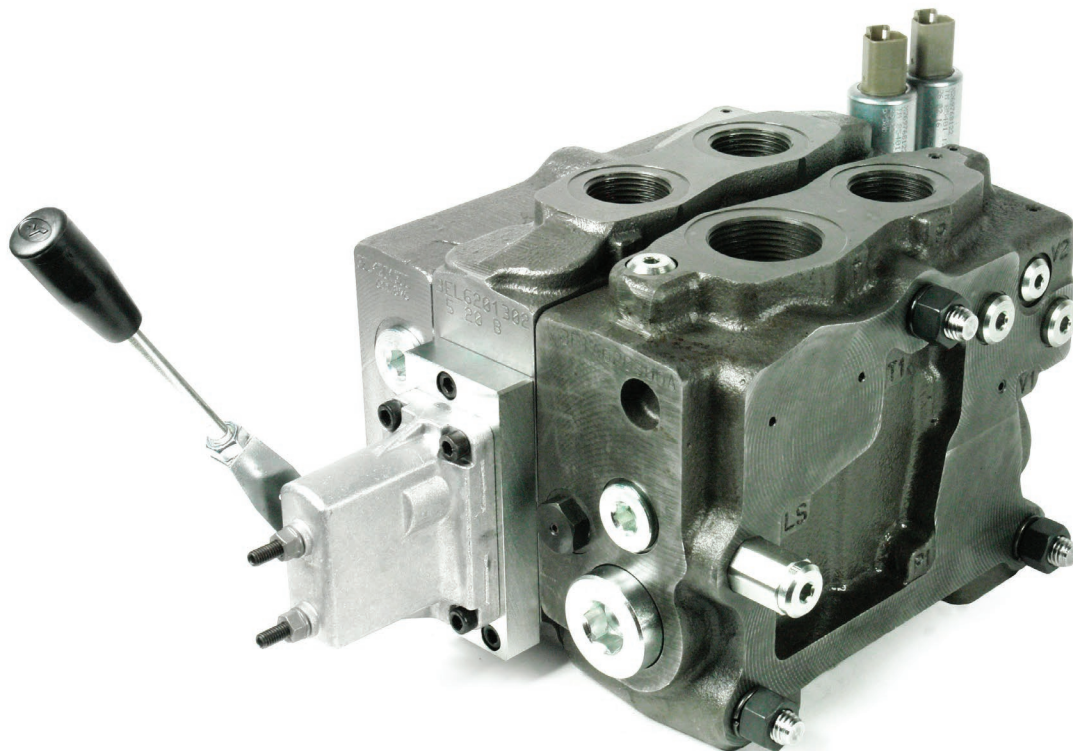


# VALVES



## DISCLAIMER

- > All performance and specification figures are where possible taken from the latest documentation and may vary from older literature versions.
- > Product photos shown are indicative only. Actual products may differ from that shown.
- > Failure or improper selection or improper use of the products described herein or related items can cause death, personal injury and property damage. Whilst every reasonable effort has been made to ensure that the information contained herein is accurate, no warranty is given that it is free from error or omission. Windust Hydraulic Services Ltd will not accept liability for any injury, loss or damage arising directly or indirectly from any use or reliance on this information.

# VALVES

## Index

PRODUCT	BRAND	MODEL
Front End Loader Valve	Walvoil	SDM 143
Front End Loader Valve	Walvoil	DLM 142
Monoblock Control Valve	Walvoil	SD5
Monoblock Control Valve	Walvoil	SD11
Monoblock Control Valve	Walvoil	SD14
Monoblock Control Valve	Walvoil	SD18
Monoblock Control Valve	Brand	SDCF 120
Monoblock Control Valve	Badestnost	P40
Monoblock Control Valve	Badestnost	P80
Monoblock Control Valve	Badestnost	P120
Sectional Valve	Walvoil	SD6 Series
Sectional Valve	Walvoil	SDS150 Series
Sectional Valve	Walvoil	SDS180 Series
Sectional Valve	Walvoil	SD25 Series
Sectional Valve	Walvoil	SDS400 Series
Sectional Valve	Prince	V20 Series
Sectional Valve	Badestnost	ZC70
Load Sense Sectional Valve	Walvoil	DLS7 Series
Load Sense Sectional Valve	Walvoil	DPC130 Series
Load Sense Sectional Valve	Walvoil	DPC200 Series
Load Sense Sectional Valve	Danfoss	PVG32
Load Sense Sectional Valve	Danfoss	PVG100
Electronic Flow Control	Brand	EFC
Electronic Flow Control (Series)	Brand	SEFC
Electric Diverter Valve	Walvoil	DFE (Solenoid Type)
Electric Diverter Valve	LC	L7
Electric Diverter Valve	Hydro Control	SVE
Electric Diverter Valve	Badestnost	DVS & SVV
Manual Diverter Valve	Walvoil	DF (Spool Type)
Manual Diverter Valve	Walvoil	DH (Rotary Type)
Manual Diverter Valve	Hydro Control	SVM
Manual Diverter Valve	Prince	Push / Pull
Manual Diverter Valve	Badestnost	3 Way, 4 Way Rotary Diverter Valve
Manual Diverter Valve	Badestnost	Selector 3 Port Push / Pull

PRODUCT	BRAND	MODEL
Cetop 3 Valve	Vickers	Cetop 3 Valve
Cetop 3 Valve	Hoyea	Cetop 3 Valve
Cetop 3 Module	Hoyea	Cetop 3 Module
Cetop 3 Subplate	Hoyea	Cetop 3 Subplates / Manifolds
Cetop 5 Valve	Vickers	Cetop 5 Valve
Cetop 5 Valve	Hoyea	Cetop 5 Valve
Cetop 5 Subplate	Hoyea	Cetop 5 Subplates
Handles & Levers	Walvoil	H Series
Handles & Levers	Walvoil	P Series, Standard Series
Handles & Levers	Hydro Control	RCX Series
Cable Controls	Walvoil	Valve Connection (A) Cables (B)
Cable Controls	Walvoil	Lever Control Kit (C) <i>Refer Page for Models</i>
Cable Controls	Walvoil	Lever Control Bank (D) <i>Refer Page for Models</i>
Cable Controls	Walvoil	Lever Control Kit (C) <i>Refer Page for Models</i>
Cable Controls	Walvoil	Lever Control Bank (D) <i>Refer Page for Models</i>
Cable Controls	Walvoil	Cable Joystick (E)
Hydraulic Pilot Controls	Walvoil	SV Hydraulic Series
Hydraulic Pilot Controls	Hydro Control	RCM Series
Hydraulic Pilot Controls	Hydro Control	RCX Series
Electronic Controls	Walvoil	CED 400X, AJW Joystick



# VALVES

## Front End Loader Valve

- > For Open & Closed Centre Systems
- > Nominal Flow Rate - 80 l/min
- > Maximum Tank Pressure - 10 BAR
- > Maximum Working Pressure - 250 BAR



## SDM 143

MODEL	DESCRIPTION	NO. SPOOLS	NOMINAL FLOW (l/min)	P&T (BSPP)	A&B (BSPP)
<b>103220018</b>	SDM143/2-P(XG-185)/113SL/18MASL/AET	2	80	3/4"	1/2"

## ACCESSORIES

MODEL	DESCRIPTION	TYPE
<b>5V13108040</b>	Detent In Float & Sprint Return To Neutral	13
<b>3XTAP732201</b>	Plug - Open Centre (Standard) DSDM143 Only	AET
<b>XGIU536692</b>	Plug - High Pressure Carry Over SDM143 Only	AE
<b>5TEL108220</b>	Cable Functions Available	TQ



# VALVES

## Front End Loader Valve

- > For Load Sense Systems
- > Nominal Flow Rate - 80 l/min
- > Maximum Tank Pressure - 10 BAR
- > Maximum Working Pressure - 250 BAR



## DLM 142

MODEL	DESCRIPTION	NO. SPOOLS	NOMINAL FLOW (l/min)	P&T (BSPP)	A&B (BSPP)
<u>103230010</u>	<u>DLM142/2-AP/113SL/18MASLU3(G4-240)</u>	<u>2</u>	<u>80</u>	<u>3/4"</u>	<u>1/2"</u>

## ACCESSORIES

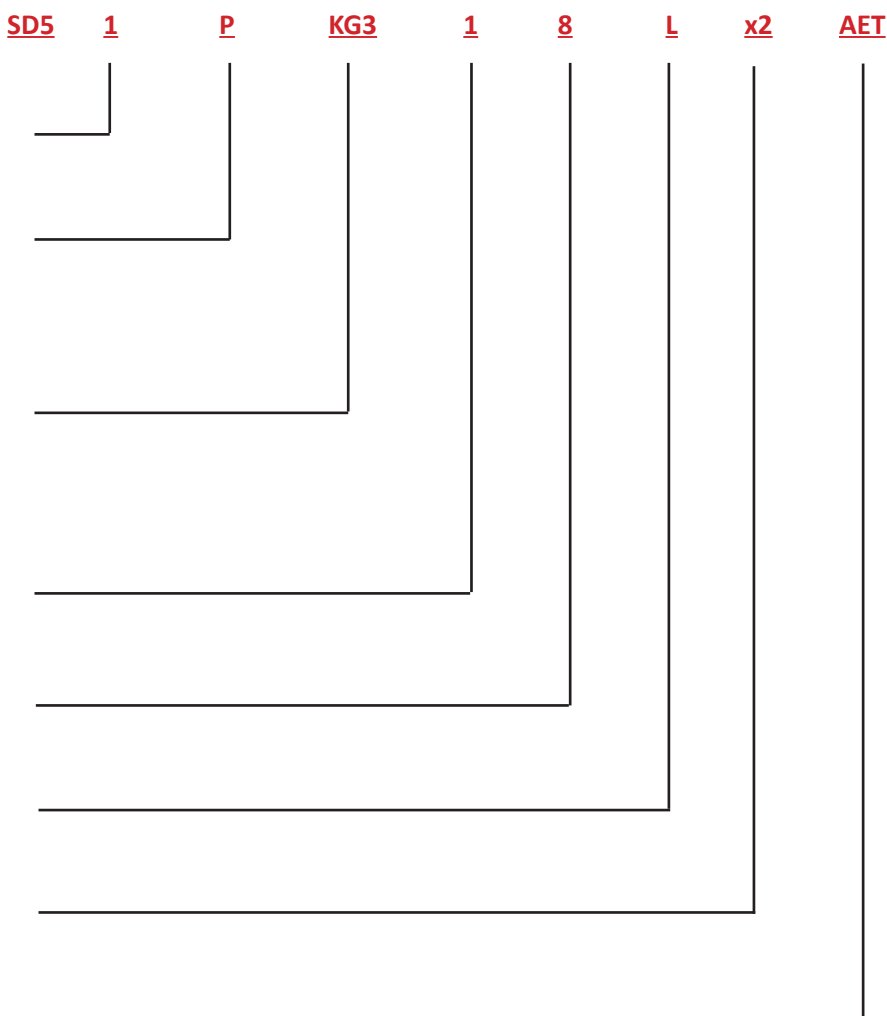
MODEL	DESCRIPTION	TYPE
<u>5V13108040</u>	<u>Detent In Float &amp; Sprint Return to Neutral</u>	<u>13</u>
<u>5TEL108220</u>	<u>Cable Functions Available</u>	<u>TQ</u>



- 
- walvoil**  
FLUID POWER E | MOTION

## SD5 ORDERING CODE EXAMPLE

**AE = Carry Over**



MODEL	DESCRIPTION	NOMINAL FLOW (l/min)	MAX PRESSURE BAR
<a href="#">102131001</a>	1 Bank / Double Acting Cylinder (Open Centre)	45	315
<a href="#">102211001</a>	2 Bank / Double Acting Cylinder (Open Centre)	45	315
<a href="#">102311001</a>	3 Bank / Double Acting Cylinder (Open Centre)	45	315
<a href="#">102411001</a>	4 Bank / Double Acting Cylinder (Open Centre)	45	315
<a href="#">102511001</a>	5 Bank / Double Acting Cylinder (Open Centre)	45	315
<a href="#">102611001</a>	6 Bank / Double Acting Cylinder (Open Centre)	45	315

- > Port (B) is Closest to Hand Lever - Pull Lever Works Port B
- > \*Requires a Shorter Stroke (CR Kits)
- > \*\*To Be Used with SV Remotes

## SD5 ACCESSORIES

MODEL	DESCRIPTION	CODE
<b>&gt; MAIN RELIEF</b>		
<a href="#">5KIT105123</a>	Direct Acting Relief	KG3
<a href="#">XTAP623282</a>	Blanking Plug	SV
<b>&gt; STANDARD SPOOLS</b>		
<a href="#">3CU1210130</a>	D/A, 3 pos, A&B Blocked, open centre (Cylinder Spool)	1
<a href="#">3CU1210200</a>	Same as 1, Metering Type	1CS
<a href="#">3CU1221130</a>	D/A, 3 pos, A to T in Neutral, B Blocked	1A
<a href="#">3CU1222130</a>	D/A, 3 pos, A Blocked, B to T in Neutral	1B
<a href="#">3CU1225130</a>	D/A, 3 pos, A & B to T, Open Centre (Motor Spool)	2
<a href="#">3CU1231130</a>	S/A, on A, 3 pos, Open Centre (Port A blocked in Neutral) B Plugged	3
<a href="#">3CU1235120*</a>	S/A, on B, 3 pos, Open Centre (Port B blocked in Neutral) A Plugged	4
<b>&gt; (A) SIDE CONTROLS - MANUAL</b>		
<a href="#">5V07405000</a>	Friction Detent	7FT
<a href="#">5V08105000</a>	Spring Return to Neutral	8
<a href="#">5V08105022</a>	(Kit 8CR) Spring Return to Neutral	8CR
<a href="#">5V08105660</a>	Micro Switch both ways with Spring Return to Neutral (NO)	8MG3
<a href="#">5V09202010</a>	One Position Detent A, Spring Return to Neutral (Push to Detent)	9BZ
<a href="#">5V10202010</a>	One Position Detent B, Spring Return to Neutral (Pull to Detent)	10BZ
<a href="#">5V11105000</a>	Three Position Detent (A, B & Neutral)	11
<a href="#">5V11105022</a>	(Kit 11CR) Three Position Detent (A, B & Neutral)	11CR
<a href="#">5V12105000</a>	Two Position Detent (A & B)	12

> SEE PAGE OVER FOR SD5 ACCESSORIES CONTINUED....

- > Port (B) is Closest to Hand Lever - Pull Lever Works Port B
- > \*Requires a Shorter Stroke (CR Kits)
- > \*\*To Be Used with SV Remotes

# SD5 ACCESSORIES CONT.

MODEL	DESCRIPTION	CODE
-------	-------------	------

## > (A) SIDE CONTROLS - ELECTRIC

<b>5CAN08025</b>	Kit - Solenoid Direct Control with Spring Return to Neutral	<b>8ES3</b>
<b>3CU1210011</b>	D/A, 3 pos, A & B Blocked, Open Centre (Cylinder Spool)	<b>1(ES)</b>
<b>3CU1225011</b>	D/A, 3 pos, A & B to T, Open Centre (Motor Spool)	<b>2(ES)</b>
<b>4SOL412012</b>	Nominal Voltage 12V DC Coil	<b>12V DC</b>
<b>4SOL412024</b>	Nominal Voltage 24V DC Coil	<b>24V DC</b>

## > (A) SIDE CONTROLS - PNEUMATIC

<b>5V08105701</b>	Pneumatic ON-OFF (Pilot Air Pressure 5-10 Bar)	<b>8P</b>
-------------------	------------------------------------------------	-----------

## > (A) SIDE CONTROLS - HYDRAULIC

<b>5V08105800</b>	Hydraulic Proportional Control (with Manual Over ride	<b>8IZ</b>
-------------------	-------------------------------------------------------	------------

## > (B) SIDE CONTROLS

<b>5LEV105000</b>	Lever Box (Handle not Included)	<b>L</b>
<b>5LEV105102</b>	Lever Box with Stroke Limiters	<b>LFG</b>
<b>5CLO205100</b>	Mechanical Dual Axis Joystick (For two Adjacent Sections)	<b>LCB</b>
<b>3SOF136240</b>	Lever Box Rubber Bellow	<b>RB</b>

## > (B) SIDE CONTROLS - OUTLET

<b>3XGIU522460</b>	High Pressure Carry Over Joint (Power Beyond)	<b>AE</b>
<b>XTAP623170</b>	Open Centre Plug	<b>AET</b>
<b>3XTAP522282</b>	Closed Centre Plug	<b>AEK</b>





- 

## SD11 ORDERING CODE EXAMPLE

**AE = Carry Over**

MODEL	DESCRIPTION	NOMINAL FLOW (l/min)	MAX PRESSURE BAR
<a href="#">104161020</a>	1 Bank / Double Acting Cylinder (Open Centre)	70	315
<a href="#">104211001</a>	2 Bank / Double Acting Cylinder (Open Centre)	70	315
<a href="#">104311001</a>	3 Bank / Double Acting Cylinder (Open Centre)	70	315
<a href="#">104411001</a>	4 Bank / Double Acting Cylinder (Open Centre)	70	315
<a href="#">104511001</a>	5 Bank / Double Acting Cylinder (Open Centre)	70	315
<a href="#">104611001</a>	6 Bank / Double Acting Cylinder (Open Centre)	70	315

> Port (B) is Closest to Hand Lever - Pull Lever works Port B

## SD11 ACCESSORIES

MODEL	DESCRIPTION	CODE
> MAIN RELIEF		
<a href="#">5KIT110113</a>	Direct Acting Relief (63 - 200 Bar)	KG3
<a href="#">3XCAR110213</a>	Direct Acting Ground Poppet Relief (125 - 250 Bar)	YG3
<a href="#">XTAP526340</a>	Blanking Plug	SV
> STANDARD SPOOLS		
<a href="#">3CU1410130</a>	D/A, 3 pos, A & B Blocked, Open Centre (Cylinder Spool)	1
<a href="#">3CU1421130</a>	D/A, 3 pos, A to T in Neutral, B Blocked	1A
<a href="#">3CU1422130</a>	D/A, 3 pos, A Blocked, B to T in Neutral	1B
<a href="#">3CU1425130</a>	D/A, 3 pos, A & B to T, Open Centre (Motor Spool)	2
<a href="#">3CU1431130</a>	S/A, on A, 3 pos, Open Centre, (Port A Blocked in Neutral) B Plugged	3
<a href="#">3CU1435130</a>	S/A, on B, 3 pos, Open Centre, (Port B Blocked in Neutral) A Plugged	4
> (A) SIDE CONTROLS - MANUAL		
<a href="#">5V07310000</a>	Friction Detent	7FC
<a href="#">5V08110000</a>	Spring Return to Neutral	8
<a href="#">5V09110000</a>	One Position Detent A, Spring Return to Neutral (Push to Detent)	9B
<a href="#">5V09110000</a>	One Position Detent B, Spring Return to Neutral (Pull to Detent)	10B
<a href="#">5V11110000</a>	Three Position Detent (A, B & Neutral)	11
<a href="#">5V12110000</a>	Two Position Detent (A & B)	12
> (A) SIDE CONTROLS - PNEUMATIC		
<a href="#">5V08110701</a>	Pneumatic ON - OFF (Pilot Air Pressure 5 - 10 Bar)	8P
<a href="#">5V08111706</a>	Pneumatic Proportional	8PG
> (B) SIDE CONTROLS		
<a href="#">5LEV110000</a>	Lever Box (Handle not Included)	L
<a href="#">5LEV110700</a>	Lever Box with Stroke Limiters	LFG
<a href="#">3SOF139350</a>	Lever Box Rubber Bellow	RB
> (B) SIDE CONTROLS - OUTLET		
<a href="#">XGIU532470</a>	High Pressure Carry Over Joint (Power Beyond)	AE
<a href="#">3XTAP732201</a>	Open Centre Plug	AET
<a href="#">3XTAP532450</a>	Closed Centre Plug	AEK

# VALVES



- > All Ports ¾" BSPF
- > Nominal Flow Rate - 120 l/min
- > Monoblock Valve with Adjustable Relief, Factory Set to 120 BAR
- > Maximum Back Pressure On Tank Port T - 25 BAR
- > No Carry Over Option
- > See Accessories for Control Options
- > Handles Not Included

SD14

## SD14 ORDERING CODE EXAMPLE

[illegible]

# SD14

MODEL	DESCRIPTION	NOMINAL FLOW (l/min)	MAX PRESSURE BAR
<a href="#">105111001</a>	1 Bank / Double Acting Cylinder (Open Centre)	120	250
<a href="#">105111012</a>	2 Bank / Double Acting Cylinder (Open Centre)	120	250
<a href="#">105111113</a>	3 Bank / Double Acting Cylinder (Open Centre)	120	250

> Port (B) is Closest to Hand Lever - Pull Lever works Port B

## SD14 ACCESSORIES

MODEL	DESCRIPTION	CODE
> STANDARD SPOOLS		
<a href="#">3CU1510140</a>	D/A, 3 pos, A & B Blocked, Open Centre with Positive Overlap	1CP
<a href="#">3CU1525600</a>	D/A, 3 POS, A & B to T, Open Centre (Motor Spool)	2
<a href="#">3CU1531140</a>	S/A, on A, 3 pos, Open Centre (Port A Blocked in Neutral) B Plugged	3
<a href="#">3CU1535140</a>	S/A, on B, 3 pos, Open Centre (Port B Blocked in Neutral) A Plugged	4
<a href="#">3CU1550100</a>	D/A, A & B Closed, Closed Centre	6
<a href="#">3CU1555100</a>	D/A, A & B to T, Closed Centre	7
> (A) SIDE CONTROLS - SPOOLS		
<a href="#">5V08110000</a>	Spring Return to Neutral	8
<a href="#">5V09110000</a>	One Position Detent A, Spring Return to Neutral (Push to Detent)	9B/10B
<a href="#">5V11110000</a>	Three Position Detent (A, B & Neutral)	11
<a href="#">5V12110000</a>	Two Position Detent (A & B)	12
> (B) SIDE CONTROLS		
<a href="#">5LEV110000</a>	Lever Box (Handle not Included)	L
<a href="#">170012020</a>	M10 X 200 Lever	AL01



# VALVES

## Monoblock Control Valve

- > Ports P, A&B ¾" BSPP
- > Nominal Flow Rate - 160 l/min
- > Tank Ports 1" BSPP
- > Monoblock Valve with Adjustable Relief, Factory Set to 120 BAR
- > Maximum Back Pressure On Tank Port T - 25 BAR
- > See Accessories for Control Options
- > Handles Not Included



# SD18

### SD18 ORDERING CODE EXAMPLE

	<u>SD18</u>	<u>1</u>	<u>P</u>	<u>KG3</u>	<u>1</u>	<u>8</u>	<u>L</u>	<u>x2</u>	<u>AET</u>
<u>NO. OF SPOOLS</u> 1,2,3,4									
<u>CIRCUIT TYPE</u> P = Parallel S = Series SP									
<u>MAIN RELIEF</u> KG3 = Direct Acting YG3 X									
<u>1<sup>st</sup> WORKING SECTION SPOOL</u> 1,2,3									
<u>SPOOL CONTROLS - (A) SIDE</u> 8, 9B/10B, 11									
<u>SPOOL CONTROLS - (B) SIDE</u> L, TP, LE									
<u>FOLLOWING WORK SECTIONS</u> x1, x2, x3, x4									
<u>OUTLET OPTIONS</u> AET = Open Centre AEK = Closed Centre AE = Carry Over									

MODEL	DESCRIPTION	NOMINAL FLOW (l/min)	MAX PRESSURE BAR
<u>106111001</u>	1 Bank / Double Acting Cylinder (Open Centre)	160	250
<u>106211001</u>	2 Bank / Double Acting Cylinder (Open Centre)	160	250
<u>106311001</u>	3 Bank / Double Acting Cylinder (Open Centre)	160	250
<u>106411001</u>	4 Bank / Double Acting Cylinder (Open Centre)	160	250

## SD18 ACCESSORIES

MODEL	DESCRIPTION	CODE
> MAIN RELIEF		
<u>5KIT120113</u>	Direct Acting Relief	KG3
<u>3XCAR120213</u>	Direct Acting Ground Poppet Relief	YG3
<u>X007211120</u>	Pilot Operated Relief	XG
<u>3XTAP535410</u>	Blanking Plug	SV
> STANDARD SPOOLS		
<u>3CU1610130</u>	D/A, 3 pos, A & B Blocked, Open Centre, (Cylinder Spool)	1
<u>3CU1625130</u>	D/A, 3 pos, A & B to T, Open Centre (Motor Spool)	2
<u>3CU1631130</u>	S/A, on A, 3 pos, Open Centre, (Port A Blocked in Neutral) B Plugged	3
<u>3CU1635130</u>	S/A, on B, 3 pos, Open Centre, (Port B Blocked in Neutral) A Plugged	4
> (A) SIDE CONTROLS - MANUAL		
<u>5V07320000</u>	Friction Detent	7FT
<u>5V08120000</u>	Spring Return to Neutral	8
<u>5V09120000</u>	One Position Detent A, Spring Return to Netral (Push to Detent)	9B
<u>5V09120000</u>	One Position Detent B, Spring Return to Netral (Pull to Detent)	10B
<u>5V11120000</u>	Three Position Detent (A, B & Neutral)	11
<u>5V12120000</u>	Two Position Detent ( A & B)	12
> (A) SIDE CONTROLS - PNEUMATIC		
<u>5V08120701</u>	Pneumatic ON - OFF (Pilot Air Pressure 5 - 10 Bar)	8P
<u>5V08120709</u>	Pneumatic Proportional	8PZ
> (B) SIDE CONTROLS		
<u>5LEV120000</u>	Lever Box (Handle not Included)	L
<u>3SOF151370</u>	Lever Box Rubber Bellow	RB
> (B) SIDE CONTROLS - OUTLET		
<u>3XGIU541811</u>	High Pressure Carry Over Joint (Power Beyond)	AE
<u>3XTAP640250</u>	Open Centre Plug	AET
<u>3XTAP540560</u>	Closed Centre Plug	AEK



# VALVES

## Monoblock Control Valve

- > Ports P & T 1 1/16" UNO
- > Ports A & B 7/8" UNO
- > Flow 0 - 68 l/min
- > Maximum Pressure - 207 Bar
- > Monoblock Valve with Adjustable Pilot Operated Relief
- > In-Built Full Range Pressure Compensated Bypass Type Flow Control
- > See Accessories for Control Options



## SDCF 120

### SDCF 120 ORDERING CODE EXAMPLE

SDCF      120      O      6      G      S      :

#### PORT SIZE

P & T 1 1/16" UNO  
A & B 7/8" UNO

#### CIRCUIT TYPE

O = Open Centre  
OM = Open Metering  
M = Fine Metering

#### FLOW SETTING

OMIT = (When using O Spool)  
6 = 0 - 6gpm (0 - 22.7 l/min)  
12 = 0 - 12gpm (0 - 45.4 l/min)  
18 = 0 - 18gpm (0 - 68.0 l/min)

#### HANDLE OPTION

G = Enclosed Handle  
J = Lever Handle - 'A' Port Active on Push  
L = Lever Handle - 'B' Port Active on Push

#### SPOOL ACTION

S = Spring Centre  
D = 3 Position Detent  
F1 = Friction Detent

#### RELIEF OPTION

OMIT = Standard Relief  
N = No Relief

# ACCESSORIES

## MODEL

## DESCRIPTION

### > SPOOL ACTION

**SDC-D** 3 Position Detent

**SDC-F1** Friction Detent

**SDC-S** Spring Centering Kit

### > HANDLE KIT

**SDC-HG** G Style Handle Kit

**SDC-HJ** J Style Handle Kit

**SDC-HL** L Style Handle Kit

### > SPARE PARTS

**SDCF-K** Seal Kit

**SDCF-CART** Pilot Operated Relief Valve





# VALVES

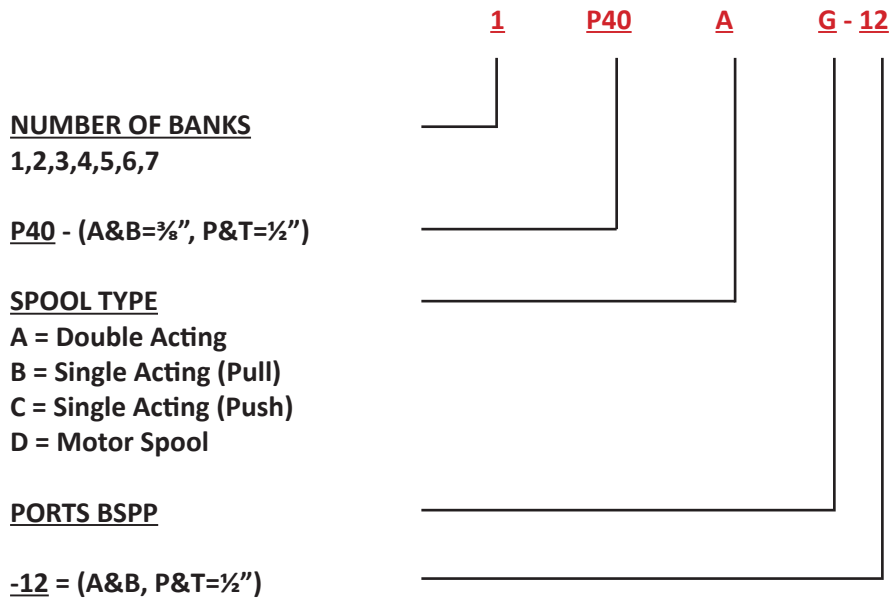
## Monoblock Control Valve

- > Ports P & T ½" BSPP
- > Ports A & B ¾" BSPP
- > Nominal Flow Rate 45 l/min
- > Tank Port Pressure 50 Bar Max
- > See Accessories for Control Options
- > 1 - 7 Banks Available

**Badestnost**  
hydraulic components

# P40

### P40 ORDERING CODE EXAMPLE



# P40

MODEL	DESCRIPTION	NOMINAL FLOW (l/min)	MAX PRESSURE BAR
<b>1P40</b>	1 Bank c/w Relief	45	250
<b>2P40</b>	2 Bank c/w Relief	45	250
<b>3P40</b>	3 Bank c/w Relief	45	250
<b>4P40</b>	4 Bank c/w Relief	45	250
<b>5P40</b>	5 Bank c/w Relief	45	250
<b>6P40</b>	6 Bank c/w Relief	45	250
<b>7P40</b>	7 Bank c/w Relief	45	250

# ACCESSORIES

## MODEL

## DESCRIPTION

<a href="#">4093146</a>	Power Beyond Sleeve ½" BSPP
<a href="#">4093160</a>	Detent Kit 3 Position - Code 8
<a href="#">4093162</a>	Spring Centre Kit - Code 1
<a href="#">4093172</a>	Spring Centre Pull A - Detent Push B - Code 2
<a href="#">4093173</a>	Detent Kit Pull A - Spring Centre Push B - Code 3
<a href="#">4093213</a>	Lever Assembly (includes Lever)
<a href="#">4093131</a>	Lever - M8 Thread
<a href="#">4093120</a>	Main Relief
<a href="#">4093702</a>	Hydraulic Control Kit
<a href="#">4103491</a>	Pneumatic Control Kit
<a href="#">1000043</a>	Spool Type A Double Acting
<a href="#">1000059</a>	Spool Type B Single Acting
<a href="#">1000044</a>	Spool Type C Single Acting
<a href="#">1000045</a>	Spool Type D Motor



# VALVES

## Monoblock Control Valve

- > Ports P, A & B ½" BSPP
- > Ports T ¾" BSPP
- > Nominal Flow Rate 80 l/min
- > Tank port pressure 50 Bar Max
- > See Accessories for Control Options
- > 1 - 6 Banks Available
- > Series Valves Available

**Badestnost**  
hydraulic components

# P80

### P80 ORDERING CODE EXAMPLE

	<u>1</u>	<u>P80</u>	<u>A</u>	<u>G</u>
<u>NUMBER OF BANKS</u> 1,2,3,4,5,6	_____	_____	_____	_____
P80 - (A, B&P=½", T=¾")	_____	_____	_____	_____
<u>SPOOL TYPE</u> A = Double Acting B = Single Acting (Pull) C = Single Acting (Push) D = Motor Spool	_____	_____	_____	_____
<u>PORTS BSPP</u>	_____	_____	_____	_____

# P80

MODEL	DESCRIPTION	NOMINAL FLOW (l/min)	MAX PRESSURE BAR
<b>1P80</b>	1 Bank c/w Relief	80	250
<b>2P80</b>	2 Bank c/w Relief	80	250
<b>3P80</b>	3 Bank c/w Relief	80	250
<b>4P80</b>	4 Bank c/w Relief	80	250
<b>5P80</b>	5 Bank c/w Relief	80	250
<b>6P80</b>	6 Bank c/w Relief	80	250

# ACCESSORIES

## MODEL

## DESCRIPTION

[4104633](#) Power Beyond Sleeve ½" BSPP

[4093057](#) Power Beyond Sleeve ¾" BSPP

[4093156](#) Detent Kit 3 Position - Code 8

[4093153](#) Spring Centre Pull A - Detent Push B - Code 2

[4093154](#) Detent Kit Pull A - Spring Centre Push B - Code 3

[4093150](#) Spring Centre Kit - Code 1

[4093132](#) Lever Assembly (includes lever)

[4093048](#) Lever - M10 Thread

[4093120](#) Main Relief

[4103492](#) Pneumatic Control Kit

[4093443](#) Joystick Direct Mount

[1000853](#) Spool Type A Double Acting

[1000854](#) Spool Type B Single Acting

[1000855](#) Spool Type C Single Acting

[1000856](#) Spool Type D Motor



# VALVES

## Monoblock Control Valve

- > Ports - All 1" BSPP
- > Nominal Flow Rate 120 l/min
- > Tank port pressure 50 Bar Max
- > See Accessories for Control Options
- > 1 - 4 Banks Available

**Badestnost**  
hydraulic components

# P120

### P120 ORDERING CODE EXAMPLE

#### NUMBER OF BANKS

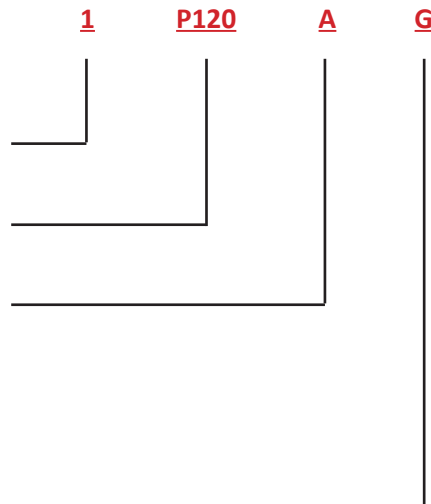
1,2,3,4

P120 - (A, B, P, T= 1" BSPP)

#### SPOOL TYPE

A = Double Acting  
B = Single Acting (Pull)  
C = Single Acting (Push)  
D = Motor Spool

#### PORTS BSPP



# P120

MODEL	DESCRIPTION	NOMINAL FLOW (l/min)	MAX PRESSURE BAR
<b>1P120</b>	1 Bank c/w Relief	120	250
<b>2P120</b>	2 Bank c/w Relief	120	250
<b>3P120</b>	3 Bank c/w Relief	120	250
<b>4P120</b>	4 Bank c/w Relief	120	250

# ACCESSORIES

## MODEL

## DESCRIPTION

[4093144](#) Power Beyond Sleeve ½" BSPP

[4093158](#) Detent Kit 3 Position - Code 8

[4100011](#) Spring Centre Pull A - Detent Push B - Code 2

[4100012](#) Detent Pull A - Spring Centre Push B - Code 3

[4099875](#) Spring Centre Kit - Code 1

[4102378](#) Lever Assembly

[4098498](#) Lever - M12 Thread

[4098926](#) Main Relief

[4098867](#) Pneumatic Control Kit

[1002927](#) Spool Type A Double Acting

[4093354](#) Spool Type B Single Acting

[4100010](#) Spool Type C Single Acting

[4092942](#) Spool Type D Motor



# VALVES

## Sectional Valve



- > Ports P, A & B  $\frac{3}{8}$ " BSPP
- > Ports T & C  $\frac{1}{2}$ " BSPP
- > Nominal Flow Rate 45 l/min
- > Maximum Working Pressure in Series 120 BAR
- > Maximum Working Pressure on 'T' Port 25 BAR
- > Main Relief Factory Set to 120 BAR (1740 psi)
- > **VALVE CODE EXAMPLE - SD6/3/AC (YG3-120) 18L/RC**

## SD6 SERIES

FLOW (l/min)	PRESSURE BAR	P (BSPP)	T&C (BSPP)	A&B (BSPP)
45	315	$\frac{3}{8}$ "	$\frac{1}{2}$ "	$\frac{3}{8}$ "

## INLET SECTION

MODEL	DESCRIPTION	CODE
<u>612201110</u>	Direct Acting Relief	AC (YG3-120)
<u>612202015</u>	Flow Control with Relief	AC (YG3-120)SN

## WORKING SECTION

MODEL	DESCRIPTION	CODE
<u>612101001</u>	Double Acting, 3 Position A & B Closed in Neutral	P-18L
<u>612101301</u>	Double Acting, 3 Position A & B Open to Tank in Neutral	P-28L
<u>612101508</u>	Single Acting on 'B' 3 Positions	P-48L
<u>612111001</u>	Series Double Acting, 3 Position A & B Closed in Neutral	S-18L

# INTERMEDIATE SECTION

MODEL	DESCRIPTION	CODE
<a href="#">612410030</a>	Intermediate Section - Compensated Flow Control	DFG
<a href="#">612421130</a>	Intermediate Section with Relief	E11 (YG3)

# OUTLET SECTION

MODEL	DESCRIPTION	CODE
<a href="#">612300110</a>	Open Centre	RC
<a href="#">612300114</a>	Upper Outlet with Side Carry Over	RE

- > \*Need to add Coils (Not Included)
- > \*\*To be used with SV remotes

# SPOOL CONTROL (A) SIDE

MODEL	DESCRIPTION	CODE
<a href="#">5V07405000</a>	With Friction and Neutral Position Sensor	7FT
<a href="#">5V08105000</a>	With Spring Return in Neutral Position	8
<a href="#">5V08105701</a>	Pneumatic ON - OFF (Pilot Air Pressure 5 - 10 Bar)	8P
<a href="#">5V09205000</a>	With Detent in Position 1 and Spring Return in Neutral Position	9BZ
<a href="#">5V10202010</a>	With Detent in Position 2 and Spring Return in Neutral Position	10BZ
<a href="#">5V11105000</a>	3 Position Detent	11
<a href="#">5V12105000</a>	2 Position Detent (1 & 2)	12
<a href="#">5V13106001</a>	4 <sup>th</sup> Position Detent (To be used with Float Spool Type 5)	13
<a href="#">5CAN08027</a>	Kit - Solenoid Direct Control with Spring Return to Neutral*	8ES3
<a href="#">5CAN08046</a>	Kit - Solenoid Direct Control with Spring Return to Neutral* (Manual Lever Over ride)	8ES3LHC
<a href="#">5V08105800</a>	Hydraulic Proportional Control** (with Manual Lever Over ride)	8IZ
<a href="#">4SOL412012</a>	12V DC Coil	12V DC
<a href="#">4SOL412024</a>	24V DC Coil	24V DC

> SEE PAGE OVER FOR SD6 SPECIFICATIONS CONTINUED....



# SPOOL OPTIONS

MODEL	DESCRIPTION	CODE
<a href="#">3CU2210130</a>	Double Acting with A & B Closed in Neutral	1
<a href="#">3CU2225130</a>	Double Acting with A & B Connected to T in Neutral	2
<a href="#">3CU2231130</a>	Single Acting on A, 3 Position, B Plugged	3
<a href="#">3CU2235130</a>	Single Acting on B, 3 Position, A Plugged	4
<a href="#">3CU2210015</a>	D/A, 3 pos, A & B Blocked, Open Centre (Cylinder Spool)	1ES3
<a href="#">3CU2225015</a>	D/A, 3 pos, A & B to T, Open Centre (Motor Spool)	2ES3
<a href="#">3CU2210016</a>	D/A, 3 pos, A & B Blocked, Open Centre (Cylinder Spool)	1(ES3LHC)
<a href="#">3CU2225016</a>	D/A, 3 pos, A & B to T, Open Centre (Motor Spool)	2(ES3LHC)

# SPOOL CONTROL (B) SIDE

MODEL	DESCRIPTION	CODE
<a href="#">5LEV105000</a>	Lever Box	L
<a href="#">5CLO206100</a>	Joystick Lever for 2 Section Operation	LCB
<a href="#">170011015</a>	M8X150 Handlever	AL01

# SERVICE VALVE OPTIONS

MODEL	DESCRIPTION	CODE
<a href="#">5Kit306112</a>	Anti Shock and Anti Cavitation (50 - 125 Bar)	U(G2)
<a href="#">5Kit306113</a>	Anti Shock and Anti Cavitation (100 - 250 Bar)	U(G3)
<a href="#">5Kit306114</a>	Anti Shock and Anti Cavitation (50 - 125 Bar)	U(G4)
<a href="#">5Kit206113</a>	Anti Shock Valve (160 - 315 Bar)	P(G3)
<a href="#">3XTAP722160</a>	Plug - A & B Port	G $\frac{3}{8}$ "
<a href="#">4TAP413210</a>	$\frac{1}{4}$ " BSP Tapered DIN 906 Plug	-
<a href="#">XTAP524280</a>	Cavity Plug	P3T

# SD6 TIE ROD KITS

MODEL	SECTIONS
<a href="#">5TIR108117</a>	1
<a href="#">5TIR108155</a>	2
<a href="#">5TIR108193</a>	3
<a href="#">5TIR108231</a>	4
<a href="#">5TIR108269</a>	5
<a href="#">5TIR108307</a>	6
<a href="#">5TIR108345</a>	7
<a href="#">5TIR108383</a>	8
<a href="#">5TIR108421</a>	9
<a href="#">5TIR108459</a>	10



# VALVES

## Sectional Valve



- > Ports A & B ½" BSPP
- > Ports P, T & C ¾" BSPP
- > Nominal Flow Rate 90 l/min
- > Maximum Working Pressure on 'T' Port 25 BAR
- > Main Relief Factory Set to 120 BAR (1740 psi)
- > VALVE CODE EXAMPLE - SDS150/3/AC (YG-120) 18L/RC

## SDS150 SERIES

FLOW (l/min)	PRESSURE BAR	P (BSPP)	T&C (BSPP)	A&B (BSPP)
90	315	¾"	¾"	½"

## INLET SECTION

MODEL	DESCRIPTION	CODE
<u>614261010</u>	With Direct Acting Relief	YG3
<u>614261001</u>	With Main Relief (Piloted)	X(G)
<u>614261003</u>	No Relief (Cavity Plug)	SV

## WORKING SECTION

MODEL	DESCRIPTION	CODE
<u>614161001</u>	Double Acting, 3 Position A & B Closed in Neutral	P-18L
<u>614161301</u>	Double Acting, 3 Position A & B Open to Tank in Neutral	P-28L
<u>614161400</u>	Single Acting on A Port	P-38L
<u>614161500</u>	Single Acting on B Port	P-48L

> SEE PAGE OVER FOR SDS150 SPECIFICATIONS CONTINUED....

# OUTLET SECTION

MODEL	DESCRIPTION	CODE
<u>614361001</u>	Open Centre	RC
<u>614361002</u>	Upper Outlet with Side Carry Over	RE
<u>614361004</u>	Closed Centre	RK

> \*\*To be used with SV remotes

# SPOOL CONTROL (A) SIDE

MODEL	DESCRIPTION	CODE
<u>5V07310000</u>	With Friction and Neutral Position Sensor	7FT
<u>5V08110000</u>	With Spring Return in Neutral Position	8
<u>5V08110701</u>	Pneumatic ON - OFF (Pilot Air Pressure 5 - 10 Bar)	8P
<u>5V08111706</u>	Pneumatic Proportional	8PZ
<u>5V09110000</u>	One Position Detent (1 or 2) Spring Return to Neutral	9B/10B
<u>5V11110000</u>	3 Position Detent	11
<u>5V12110000</u>	2 Position Detent (1 & 2)	12
<u>5V08110320</u>	Electro-Hydraulic ON - OFF 12V DC* (Plus Adder)	8EI312V
<u>5V08110321</u>	Electro-Hydraulic ON - OFF 24V DC* (Plus Adder)	8EI324V
<u>5KE1S00030</u>	*Adder for Single Bank	KE1S0
<u>5V08110800</u>	Hydraulic Proportional Control ** (with Manual Lever Over ride)	8IZ

# SPOOL OPTIONS

MODEL	DESCRIPTION	CODE
<u>3CU2410120</u>	Double Acting with A & B Closed in Neutral	1
<u>3CU2425200</u>	Double Acting with A & B Connected to T in Neutral	2
<u>3CU2431180</u>	Single Acting on A Port	3
<u>3CU2435100</u>	Single Acting on B Port	4

> SEE PAGE OVER FOR SDS150 SPECIFICATIONS CONTINUED....

# SPOOL CONTROL (B) SIDE

MODEL	DESCRIPTION	CODE
<a href="#">5LEV110000</a>	Lever Box	L
<a href="#">170012020</a>	M10 x 200 Handle Lever	AL01
<a href="#">5TEL110005</a>	CG Cable Connection	TP

## SERVICE VALVE OPTIONS

MODEL	DESCRIPTION	CODE
<a href="#">XTAP526340</a>	Blanking Plug	SV
<a href="#">3XCAR110213</a>	Direct Acting Poppet Relief	YG3
<a href="#">X006211120</a>	Pilot Operated Relief	XG
<a href="#">5Kit210212</a>	Anti Shock (40 - 80 Bar)	P(G2)
<a href="#">5Kit210213</a>	Anti Shock (63 - 200 Bar)	P(G3)
<a href="#">5Kit210214</a>	Anti Shock (160 - 315 Bar)	P(G4)
<a href="#">5Kit310112</a>	Anti Shock and Anti Cavitation (63 - 125 Bar)	U(G2)
<a href="#">5Kit310113</a>	Anti Shock and Anti Cavitation (100 - 250 Bar)	U(G3)
<a href="#">5Kit310114</a>	Anti Shock and Anti Cavitation (200 - 315 Bar)	U(G4)
<a href="#">5Kit410100</a>	Anti Cavitation	C
<a href="#">XTAP530330</a>	Cavity Plug	P3T

## SDS150 TIE ROD KITS

MODEL	SECTIONS
<a href="#">5TIR110149</a>	1
<a href="#">5TIR110194</a>	2
<a href="#">5TIR110239</a>	3
<a href="#">5TIR110284</a>	4
<a href="#">5TIR110329</a>	5
<a href="#">5TIR110374</a>	6
<a href="#">5TIR110419</a>	7
<a href="#">5TIR110465</a>	8



# VALVES

## Sectional Valve



- > Port Size P, A & B  $\frac{3}{4}$ " BSPP
- > Port Size T & C 1" BSPP
- > Nominal Flow Rate 140 l/min
- > Maximum Working Pressure on 'T' Port 25 BAR
- > Main Relief Factory Set to 120 BAR (1740 psi)
- > VALVE CODE EXAMPLE - SDS180/3/AC (YG-120) 18L/RC

## SDS180 SERIES

FLOW (l/min)	PRESSURE BAR	P (BSPP)	T&C (BSPP)	A&B (BSPP)
140	315	$\frac{3}{4}$ "	1"	$\frac{3}{4}$ "

## INLET SECTION

MODEL	DESCRIPTION	CODE
<a href="#">618201005</a>	With Direct Acting Relief	YG3
<a href="#">618201004</a>	With Main Relief (Piloted)	X(G)
<a href="#">618201006</a>	No Relief (Cavity Plug)	SV

## WORKING SECTION

MODEL	DESCRIPTION	CODE
<a href="#">618101003</a>	Double Acting, 3 Position A & B Closed in Neutral	P-18L
<a href="#">618101006</a>	Double Acting, 3 Position A & B Open to Tank in Neutral	P-28L
<a href="#">618101017</a>	Single Acting on A Port	P-38L
<a href="#">615101501</a>	Single Acting on B Port	P-48L

# OUTLET SECTION

MODEL	DESCRIPTION	CODE
<a href="#">618301003</a>	Open Centre	RC
<a href="#">618301001</a>	Upper Outlet with Side Carry Over	RE
<a href="#">618301004</a>	Closed Centre	RK

> \*\*To be used with SV remotes

# SPOOL CONTROL (A) SIDE

MODEL	DESCRIPTION	CODE
<a href="#">5V07310000</a>	With Friction and Neutral Position Sensor	7FT
<a href="#">5V08110000</a>	With Spring Return in Neutral Position	8
<a href="#">5V08110701</a>	Pneumatic ON - OFF (Pilot Air Pressure 5 - 10 Bar)	8P
<a href="#">5V08111706</a>	Pneumatic Proportional	8PZ
<a href="#">5V09110000</a>	One Position Detent (1 or 2) Spring Return to Neutral	9B/10B
<a href="#">5V11110000</a>	3 Position Detent	11
<a href="#">5V12110000</a>	2 Position Detent (1 & 2)	12
<a href="#">5V13116000</a>	4 <sup>th</sup> Position Detent (To be used with Float Spool Type 5)	13
<a href="#">5V08110320</a>	Electro-Hydraulic ON - OFF 12V DC* (Plus Adder)	8EI312V
<a href="#">5V08110321</a>	Electro-Hydraulic ON - OFF 24V DC* (Plus Adder)	8EI324V
<a href="#">5KE1S00030</a>	*Adder for Single Bank	KE1S0
<a href="#">5V08110800</a>	Hydraulic Proportional Control ** (with Manual Lever Over ride)	8IZ

# SPOOL OPTIONS

MODEL	DESCRIPTION	CODE
<a href="#">3CU2510100</a>	Double Acting with A & B Closed in Neutral	1
<a href="#">3CU2525100</a>	Double Acting with A & B Connected to T in Neutral	2
<a href="#">3CU2531100</a>	Single Acting on A Port	3
<a href="#">3CU2535100</a>	Single Acting on B Port	4
<a href="#">5V13116000</a>	Double Acting 4 Position A & B Blocked, Open Centre (Used with Kit 13)	5

> SEE PAGE OVER FOR SDS180 SPECIFICATIONS CONTINUED....

# SPOOL CONTROL (B) SIDE

MODEL	DESCRIPTION	CODE
<a href="#">5LEV110000</a>	Lever Box	L
<a href="#">170012020</a>	M10 x 200 Hand Lever	AL01

## SERVICE VALVE OPTIONS

MODEL	DESCRIPTION	CODE
<a href="#">XTAP535410</a>	Blanking Plug	SV
<a href="#">3XCAR120213</a>	Direct Acting Poppet Relief	YG3
<a href="#">X007211120</a>	Pilot Operated Relief	XG
<a href="#">XCAR216116</a>	Anti Shock (63 - 200 Bar)	P(G3)
<a href="#">XCAR216117</a>	Anti Shock (160 - 315 Bar)	P(G4)
<a href="#">X011411100</a>	Anti Shock and Anti Cavitation (100 - 250 Bar)	U(G3)
<a href="#">X011411101</a>	Anti Shock and Anti Cavitation (200 - 315 Bar)	U(G4)
<a href="#">3XCAR416100</a>	Anti Cavitation	C
<a href="#">XTAP530362</a>	Cavity Plug	P3T

## SDS180 TIE ROD KITS

MODEL	SECTIONS
<a href="#">5TIR110170</a>	1
<a href="#">5TIR110248</a>	2
<a href="#">5TIR110266</a>	3
<a href="#">5TIR110316</a>	4
<a href="#">5TIR110368</a>	5
<a href="#">5TIR110410</a>	6
<a href="#">5TIR110458</a>	7
<a href="#">5TIR110506</a>	8



# VALVES

## Sectional Valve



- > Port Size P, A & B 1" BSPP
- > Port Size T & C 1 1/4" BSPP
- > Nominal Flow Rate 240 l/min
- > Maximum Working Pressure on 'T' Port 25 BAR
- > Main Relief Factory Set to 120 BAR (1740 psi)
- > VALVE CODE EXAMPLE - SD25/3/AC (YG-120) 18L/RC

## SD25 SERIES

FLOW (l/min)	PRESSURE BAR	P (BSPP)	T&C (BSPP)	A&B (BSPP)
240	315	1"	1 1/4"	1"

## INLET SECTION

MODEL	DESCRIPTION	CODE
<u>61H201101</u>	With Direct Acting Relief	YG3
<u>61H201112</u>	With Main Relief (Piloted)	X(G)
<u>61H201109</u>	No Relief (Cavity Plug)	SV

## WORKING SECTION

MODEL	DESCRIPTION	CODE
<u>61H101001</u>	Double Acting, 3 Position A & B Closed in Neutral	P-18L
<u>617101301</u>	Double Acting, 3 Position A & B Open to Tank in Neutral	P-28L

> SEE PAGE OVER FOR SD25 SPECIFICATIONS CONTINUED....



# OUTLET SECTION

MODEL	DESCRIPTION	CODE
617300110	Open Centre	RC
617300111	Upper Outlet with Side Carry Over	RE
617300112	Closed Centre	RK

## SPOOL CONTROL (A) SIDE

MODEL	DESCRIPTION	CODE
5V07320000	With Friction and Neutral Position Sensor	7FT
5V08120000	With Spring Return in Neutral Position	8
5V08120701	Pneumatic ON - OFF (Pilot Air Pressure 5 - 10 Bar)	8P
5V08120709	Pneumatic Proportional	8PZ
5V09120000	One Position Detent (1 or 2) Spring Return to Neutral	9B/10B
5V11120000	3 Position Detent	11
5V12120000	2 Position Detent (1 & 2)	12
5V13025000	4 <sup>th</sup> Position Detent (To be used with Float Spool Type 5)	13
5V08120350	Electro-Hydraulic ON - OFF 12V DC* (Plus Adder)	8E1312V
5V08120351	Electro-Hydraulic ON - OFF 24V DC* (Plus Adder)	8E1324V
5KE1S00030	*Adder for Single Bank	KE1S0

## SPOOL OPTIONS

MODEL	DESCRIPTION	CODE
3CU2710100	Double Acting with A & B Closed in Neutral	1
3CU2725100	Double Acting with A & B Connected to T in Neutral	2
3CU2731100	Single Acting on A Port	3
3CU2735100	Single Acting on B Port	4
3CU2741100	Double Acting 4 Position A & B Blocked, Open Centre (Used with Kit 13)	5

> SEE PAGE OVER FOR SD25 SPECIFICATIONS CONTINUED....

# SPOOL CONTROL (B) SIDE

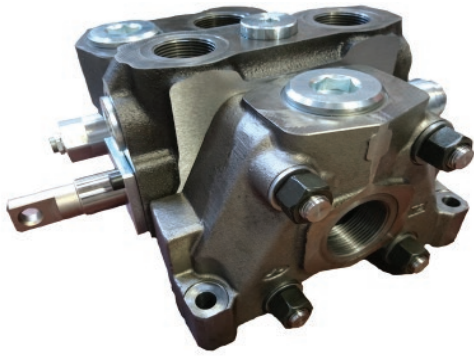
MODEL	DESCRIPTION	CODE
<a href="#">5LEV120000</a>	Lever Box	L
<a href="#">170013020</a>	M12 x 200 Hand Lever	AL01
<a href="#">5TEL120005</a>	CG Cable Connection	TP

## SERVICE VALVE OPTIONS

MODEL	DESCRIPTION	CODE
<a href="#">XTAP536541</a>	Blanking Plug	SV
<a href="#">XCAR125213</a>	Direct Acting Poppet Relief	YG3
<a href="#">X008211120</a>	Pilot Operated Relief	XG
<a href="#">XCAR216115</a>	Anti Shock (40 - 80 Bar)	P(G2)
<a href="#">XCAR216116</a>	Anti Shock (63 - 200 Bar)	P(G3)
<a href="#">XCAR216117</a>	Anti Shock (160 - 315 Bar)	P(G4)
<a href="#">X011411099</a>	Anti Shock and Anti Cavitation (63 - 125 Bar)	U(G2)
<a href="#">X011411100</a>	Anti Shock and Anti Cavitation (100 - 250 Bar)	U(G3)
<a href="#">X011411101</a>	Anti Shock and Anti Cavitation (200 - 315 Bar)	U(G4)
<a href="#">3XCAR416100</a>	Anti Cavitation	C
<a href="#">XTAP530362</a>	Cavity Plug	P3T

## SD25 TIE ROD KITS

MODEL	SECTIONS
<a href="#">5TIR112234</a>	1
<a href="#">5TIR112296</a>	2
<a href="#">5TIR112358</a>	3
<a href="#">5TIR112420</a>	4
<a href="#">5TIR112482</a>	5
<a href="#">5TIR112544</a>	6



# VALVES

## Sectional Valve

- > Port Size P, A & B 1 1/4 " BSPP
- > Port Size T & C 1 1/2" BSPP
- > Nominal Flow Rate 400 l/min
- > Maximum Working Pressure on 'T' Port 25 BAR



## SDS400 SERIES

FLOW (l/min)	PRESSURE BAR	P (BSPP)	T&C (BSPP)	A&B (BSPP)
400	315	1 1/4"	1 1/2"	1 1/4"

## SECTIONS

MODEL	DESCRIPTION	CODE
<u>61G201000</u>	Inlet - Side inlet port, relief valve P & T1 ports plugged	AC(XG3-250)
<u>61G101000</u>	Working - Parallel, double acting, no lever, spring return	103-8SLP
<u>61G301000</u>	Outlet - Side port open, upper port plugged	RC

> CUSTOM CONFIGURATION OPTIONS AVAILABLE - CONTACT FOR DETAILS....



# VALVES

## Sectional Valve

- > UNO Ports
- > 1 - 10 Sections
- > Same as Gresen V20

**Prince**

## V20

FLOW (l/min)	PRESSURE BAR	P (UNO)	T&C (UNO)	A&B (UNO)
75	241	1 1/16"	1 1/16"	7/8"

## INLET SECTION

MODEL	DESCRIPTION
<b>20I2J</b>	Open Centre with Adjustable Relief 151-200 Bar

## WORKING SECTION

MODEL	DESCRIPTION	PORT RELIEFS
<b>20P1AA1AA</b>	Single Acting - Pull to Lift Spring Centre	Plugged
<b>20P1BA1AA</b>	Double Acting Cylinder Spring Centre	Plugged
<b>20P1CA1AA</b>	Double Acting Motor Spring Centre	Plugged
<b>20P1DD1AA</b>	Double Acting Cylinder Spring Centre - Float	Plugged

# OUTLET SECTION

## MODEL

## DESCRIPTION

[20E22](#)

Open Centre with Power Beyond Port Option

# TIE ROD KITS

## MODEL

## SECTIONS

[660402001](#)

1

[660402002](#)

2

[660402003](#)

3

[660402004](#)

4

[660402005](#)

5

# SPARE PARTS

## MODEL

## DESCRIPTION

[660190003](#)

Spring Centre Kit

[660190004](#)

3 Position Detent Kit

[660190001](#)

Complete Vert. Handle Kit

[660190002](#)

Complete Standard Handle Kit

[660290004](#)

Power Beyond Sleeve 7/8" UNO

[660585002](#)

Inlet Section Seal Kit

[660585003](#)

Outlet Section Seal Kit

[660585004](#)

Work Section Seal Kit



# VALVES

## Sectional Valve

- > Nominal Flow Rate 70 l/min
- > Max Pressure 250 BAR
- > Ideal for Post Driver Applications
- > Custom Built to Order

***Badestnost***  
hydraulic components

# ZC70

### ZC70 ORDERING CODE EXAMPLE

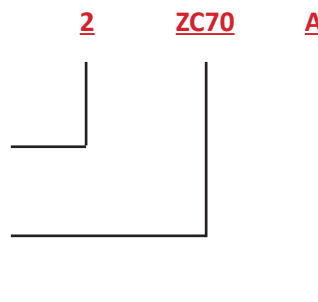
#### NUMBER OF BANKS

2,3,4,5

ZC70 (PA&B = ½", T = ¾")

#### SPOOL TYPE

A = Double Acting  
B = Single Acting (Pull)  
D = Motor Spool



# ZC70

### MODEL

### DESCRIPTION

<b><u>2PC70N1PA1PB1T1GKZ1AY180</u></b>	<b><u>1xD/A 1xS/A - Port Relief S/A 180 BAR</u></b>
<b><u>3PC70N1PA1PA1PB1T1GKZ1AY180</u></b>	<b><u>2xD/A 1xS/A - Port Relief S/A 180 BAR</u></b>
<b><u>4PC70N1PA1PA1PA1PB1T1GKZ1</u></b>	<b><u>3xD/A 1xS/A - Port Relief S/A 180 BAR</u></b>
<b><u>5PC70N1PA1PA1PA1PA1PB1T1GKZ1</u></b>	<b><u>4xD/A 1xS/A - Port Relief S/A 180 BAR</u></b>



# VALVES

## Sectional Valve Load Sense Valve

- > Maximum Working Pressure on 'T' Port 25 BAR
- > Main Relief Factory Set to 120 BAR (1740 psi)
- > 1 - 10 Sections



> VALVE CODE EXAMPLE - DLS7/2/AM(G3-120)/6V8MCLFG/6V8MCLFG/RF

## DLS7 SERIES

FLOW (l/min)	PRESSURE BAR	P&T (BSPP)	LS (BSPP)	A&B (BSPP)
75	315	1/2"	1/4"	3/8"

## INLET SECTION

MODEL	DESCRIPTION	CODE
<u>61B331000</u>	L.S - Flow Control - Relief Valve	<u>AM(G3-125)</u>
<u>61B333000</u>	Open Centre - No Relief or Flow Control	<u>AP(SV)</u>
<u>61B332000</u>	L.S Relief - No Flow Control	<u>AN(G3-125)</u>

## WORKING SECTION

MODEL	DESCRIPTION	CODE
<u>61B131201</u>	Double Acting Cylinder - Spring Centred - Manual Lever	<u>6V8MCLFG</u>
<u>61B131221</u>	Double Acting Cylinder - Hydraulic Pilot Control with Stroke Adjuster	<u>6V8IMF3</u>

> SEE PAGE OVER FOR DLS7 SPECIFICATIONS CONTINUED....

# OUTLET SECTION

MODEL	DESCRIPTION	CODE
<a href="#">61B431000</a>	Standard	RF
<a href="#">61B433001</a>	L.S Signal Carryover	RH

## SPOOL CONTROL (A) SIDE

MODEL	DESCRIPTION	CODE
<a href="#">5V07405000</a>	Friction Detent	7FT
<a href="#">5V08205000</a>	Spring Centred	8MC
<a href="#">5V08205200</a>	Spring Centre c/w M8 Thread for Dual Control	8DMC
<a href="#">5V08105709</a>	Proportional Pneumatic Kit	8PZ
<a href="#">5V08106800</a>	Proportional Hydraulic Pilot	8IZ

## SPOOL OPTIONS

MODEL	DESCRIPTION	FLOW (l/min)	CODE
<a href="#">3CU3110010</a>	Double Acting Cylinder	10	6D
<a href="#">3CU3110020</a>	Double Acting Cylinder	20	6V
<a href="#">3CU3110030</a>	Double Acting Cylinder	30	6T
<a href="#">3CU3110040</a>	Double Acting Cylinder	40	6Q
<a href="#">3CU3110050</a>	Double Acting Cylinder	50	6C
<a href="#">3CU3110060</a>	Double Acting Cylinder	60	6S
<a href="#">3CU3125010</a>	Double Acting Motor	10	7D
<a href="#">3CU3125020</a>	Double Acting Motor	20	7V
<a href="#">3CU3125030</a>	Double Acting Motor	30	7T
<a href="#">3CU3125040</a>	Double Acting Motor	40	7Q
<a href="#">3CU3125050</a>	Double Acting Motor	50	7C
<a href="#">3CU3125060</a>	Double Acting Motor	60	7S

## SPOOL CONTROL (B) SIDE

MODEL	DESCRIPTION	CODE
<a href="#">5LEV107800</a>	Alloy Lever Box	LFG
<a href="#">5COP107000</a>	No Lever Box - Dust Proof Plate	SLP
<a href="#">5COP205030</a>	No Lever Box - End Cap	SLCZ
<a href="#">5TEL107110</a>	Cable Connection - CD Cables	TQ
<a href="#">5CLO202000</a>	Joystick Lever - 2 Section Operation	LCB

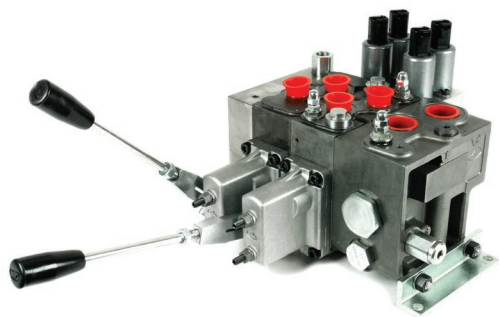


# PORT RELIEF OPTIONS

MODEL	DESCRIPTION	PRESSURE BAR	CODE
<a href="#">5KIT206112</a>	Anti-shock	50 - 125	P(G2)
<a href="#">5KIT206113</a>	Anti-shock	100 - 200	P(G3)
<a href="#">5KIT206114</a>	Anti-shock	160 - 315	P(G4)
<a href="#">5KIT306112</a>	Anti-shock & Anti-Cavitation	50 - 125	U(G2)
<a href="#">5KIT306113</a>	Anti-shock & Anti-Cavitation	100 - 250	U(G3)
<a href="#">5KIT306114</a>	Anti-shock & Anti-Cavitation	160 - 315	U(G4)

# DLS7 TIE ROD KITS

MODEL	SECTIONS
<a href="#">5TIR108126</a>	1
<a href="#">5TIR108166</a>	2
<a href="#">5TIR108204</a>	3
<a href="#">5TIR108242</a>	4
<a href="#">5TIR108280</a>	5
<a href="#">5TIR108318</a>	6
<a href="#">5TIR108356</a>	7
<a href="#">5TIR108394</a>	8
<a href="#">5TIR108432</a>	9
<a href="#">5TIR108470</a>	10



# VALVES

Sectional Valve  
Load Sense Valve



## DPC 130 SERIES

INLET FLOW (l/min)	PRESSURE BAR	P&T (BSPP)	LS (BSPP)	A&B (BSPP)
150	315	3/4"	1/4"	1/2"

## INLET SECTION

MODEL	DESCRIPTION	CODE
<a href="#">5FIA630301</a>	With Pressure Reducing Valve - Open Centre	BR11
<a href="#">5FIA630300</a>	With Pressure Reducing Valve - Closed Centre	BR21
<a href="#">5FIA630303</a>	Without Pressure Reducing Valve - Open Centre	BN11
<a href="#">5FIA630302</a>	Without Pressure Reducing Valve - Closed Centre	BN21

## WORKING SECTION

MODEL	DESCRIPTION	CODE
<a href="#">5EL6301310</a>	With Compensator	C10
<a href="#">5EL6301320</a>	With Compensator and Port Relief Cavities	C20
<a href="#">5EL6301321</a>	With Compensator and Port Relief Cavities and One L.S Valve Seat	C21
<a href="#">5EL6301322</a>	With Compensator and Port Relief Cavities and Two L.S Valve Seat	C22
<a href="#">5EL6302310</a>	Without Compensator	D10
<a href="#">5EL6302320</a>	Without Compensator and Port Relief Cavities	D20

# OUTLET SECTION

MODEL	DESCRIPTION	CODE
<a href="#">3FIA731000</a>	Without Ports	RF
<a href="#">3FIA731310</a>	With P & T Ports	RC
<a href="#">3FIA731320</a>	With P & T Ports and L.S Ports	RD

# SPOOL CONTROL OPTIONS (A&B) SIDE

MODEL	DESCRIPTION	CODE
<a href="#">5V07130000</a>	Friction Detent	7FT
<a href="#">5V08130000</a>	Spring Return to Neutral	8
<a href="#">5V08130780</a>	Proportional E/H 12V DC	8EZ3
<a href="#">5V08130781</a>	Proportional E/H 24V DC	8EZ3
<a href="#">5V08130800</a>	Hydraulic Proportional Kit	8IM
<a href="#">5LEV130712</a>	Lever Box	L
<a href="#">170011117</a>	Handle M8 x 170mm	-

# RELIEF OPTIONS

MODEL	DESCRIPTION	CODE
<a href="#">XCAR126215</a>	L/S Relief (40 - 180 Bar)	S
<a href="#">XCAR126213</a>	L/S Relief (180 - 350 Bar)	S
<a href="#">5Kit126210</a>	Relief Blanking Plug	ST

# UNLOADER OPTIONS

MODEL	DESCRIPTION	CODE
<a href="#">0EC08002033</a>	(EC08M/10PB) With Push Button Emergency Override	ELP
<a href="#">XTAP225320</a>	Unloader Cavity Plug	LT
<a href="#">4SLE00120012</a>	12V DC Coil	12V DC
<a href="#">4SLE00120024</a>	24V DC Coil	24V DC

> SEE PAGE OVER FOR DPC 130 SPECIFICATIONS CONTINUED....

# END COVER - BODY KIT

MODEL	DESCRIPTION	CODE
<a href="#">3FIA731000</a>	Without Ports	RF
<a href="#">3FIA731310</a>	With P1 & T1 Ports	RC
<a href="#">3FIA731320</a>	With P1, T1 and LS1 Ports	RD

## END COVER - DRAIN OPTIONS

MODEL	DESCRIPTION	CODE
<a href="#">XTAP517460</a>	Plug for Kit 7FT/8	1
<a href="#">XTAP217160</a>	Plug for Kit 8IM	2
<a href="#">XCAR1196611</a>	G ¼" Sleeve for Kit 8EZ3/8ZR3	3

## END COVER - PORT OPTIONS

MODEL	DESCRIPTION	CODE
<a href="#">3XTAP732200</a>	P & T Plugged	1
<a href="#">3XTAP732200</a>	P or T Plugged	2 (3)

# WORKING SECTION - SPOOLS

MODEL	DESCRIPTION	CODE
<a href="#">3CU4010010</a>	D/A, 3 pos, A & B Closed in Neutral (Cylinder Spool) 10 l/min	1D
<a href="#">3CU4010025</a>	D/A, 3 pos, A & B Closed in Neutral (Cylinder Spool) 25 l/min	1V
<a href="#">3CU4010040</a>	D/A, 3 pos, A & B Closed in Neutral (Cylinder Spool) 40 l/min	1Q
<a href="#">3CU4010060</a>	D/A, 3 pos, A & B Closed in Neutral (Cylinder Spool) 60 l/min	1S
<a href="#">3CU4010080</a>	D/A, 3 pos, A & B Closed in Neutral (Cylinder Spool) 80 l/min	1N
<a href="#">3CU4024010</a>	D/A, 3 pos, A & B Open in Neutral (Motor Spool) 10 l/min	2D
<a href="#">3CU4024025</a>	D/A, 3 pos, A & B Open in Neutral (Motor Spool) 25 l/min	2V
<a href="#">3CU4024040</a>	D/A, 3 pos, A & B Open in Neutral (Motor Spool) 40 l/min	2Q
<a href="#">3CU4024060</a>	D/A, 3 pos, A & B Open in Neutral (Motor Spool) 60 l/min	2S
<a href="#">3CU4024080</a>	D/A, 3 pos, A & B Open in Neutral (Motor Spool) 80 l/min	2N
<a href="#">3CU4031040</a>	S/A on A, B Port Plugged 40 l/min	3Q
<a href="#">3CU4031060</a>	S/A on A, B Port Plugged 60 l/min	3S
<a href="#">3CU4031080</a>	S/A on A, B Port Plugged 80 l/min	3N

## PORT RELIEF VALVES (PRESET)

MODEL	DESCRIPTION	CODE
<a href="#">5Kit330050</a>	50 Bar	U050
<a href="#">5Kit330125</a>	125 Bar	U125
<a href="#">5Kit330175</a>	175 Bar	U175
<a href="#">5Kit330250</a>	250 Bar	U250
<a href="#">XTAP522441</a>	Cavity Plug	UT

## WORKING SECTION LOAD SENSE RELIEF OPTIONS

MODEL	DESCRIPTION	CODE
<a href="#">XCAR126215</a>	L/S Relief (40 - 180 Bar)	S
<a href="#">XCAR126213</a>	L/S Relief (180 - 350 Bar)	S
<a href="#">5Kit126210</a>	Relief Valve Blanking Plug	ST

> SEE PAGE OVER FOR DPC 130 SPECIFICATIONS CONTINUED....

# DPC130 TIE ROD KITS

## MODEL

## SECTIONS

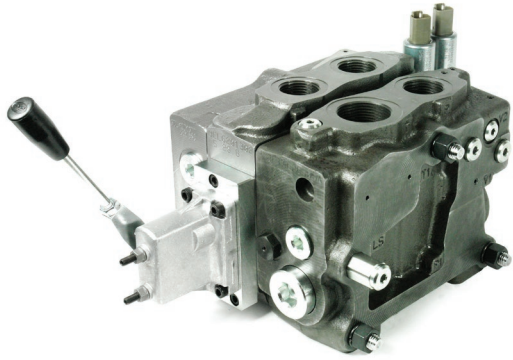
<a href="#">5TIR108185</a>	1
<a href="#">5TIR108232</a>	2
<a href="#">5TIR108281</a>	3
<a href="#">5TIR108328</a>	4
<a href="#">5TIR108376</a>	5
<a href="#">5TIR108425</a>	6
<a href="#">5TIR108472</a>	7
<a href="#">5TIR108520</a>	8

# SEAL KITS

## MODEL

## DESCRIPTION

<a href="#">5GUA130</a>	Face Seal Kit
<a href="#">5GE34110019</a>	C10 Work Section



# VALVES

Sectional Valve  
Load Sense Valve



## DPC 200 SERIES

INLET FLOW (l/min)	PRESSURE BAR	P (BSPP)	T (BSPP)	LS (BSPP)	A&B (BSPP)
260	350	1"	1 1/4"	1/4"	1"

## INLET SECTION

MODEL	DESCRIPTION	CODE
<a href="#">5FIA620702</a>	With Pressure Reducing Valve - Open Centre	BR1-1
<a href="#">5FIA620704</a>	With Pressure Reducing Valve - Closed Centre	BR2-1

## WORKING SECTION

MODEL	DESCRIPTION	CODE
<a href="#">5EL6201710</a>	With Compensator - SAE	C10
<a href="#">5EL6201732</a>	With Compensator and Relief Valve and One L.S Valve Seat	C32

## OUTLET SECTION

MODEL	DESCRIPTION	CODE
<a href="#">3FIA720300</a>	Without Ports	RF
<a href="#">3FIA720702</a>	With P & T Ports and L.S Ports	RD

> SEE PAGE OVER FOR DPC 200 SPECIFICATIONS CONTINUED....

# SPOOL CONTROL OPTIONS (A&B) SIDE

MODEL	DESCRIPTION	CODE
<a href="#">5V07200000</a>	Friction Detent	7FT
<a href="#">5V08200000</a>	Spring Return to Neutral	8
<a href="#">5V08200721</a>	Proportional E/H 12V DC	8EZ3T
<a href="#">5V08200741</a>	Proportional E/H 24V DC	8EZ3T
<a href="#">5V08200870</a>	Hydraulic Proportional Kit	8IM
<a href="#">5LEV200701</a>	Lever Box	L
<a href="#">170011117</a>	Handle	-

## RELIEF OPTIONS

MODEL	DESCRIPTION	CODE
<a href="#">XCAR126215</a>	L/S Relief (40 - 180 Bar)	S
<a href="#">XCAR126213</a>	L/S Relief (180 - 350 Bar)	S
<a href="#">5Kit126210</a>	Relief Blanking Plug	ST

## END COVER - BODY KIT

MODEL	DESCRIPTION	CODE
<a href="#">3FIA720300</a>	Without Ports	RF
<a href="#">3FIA720702</a>	With P1, T1 and LS1 Ports	RD

## END COVER - DRAIN OPTIONS

MODEL	DESCRIPTION	CODE
<a href="#">XTAP517460</a>	Plug for Kit 7FT/8	1
<a href="#">XTAP217160</a>	Plug for Kit 8IM	2
<a href="#">XGIU519610</a>	G ¼" Sleeve for Kit 8EZ3T	3



# PORT RELIEF VALVES (PRESET)

MODEL	DESCRIPTION	CODE
<a href="#">5Kit340050L</a>	50 Bar	U050
<a href="#">5Kit340100L</a>	105 Bar	U100
<a href="#">5Kit340250L</a>	250 Bar	U250
<a href="#">5Kit340350L</a>	350 Bar	U350
<a href="#">5Kit409000</a>	Anti-Cav Valve	C
<a href="#">XTAP528520</a>	Cavity Plug	UT

## WORKING SECTION LOAD SENSE RELIEF OPTIONS

MODEL	DESCRIPTION	CODE
<a href="#">XCAR126215</a>	L/S Relief (40 - 180 Bar)	S
<a href="#">XCAR126213</a>	L/S Relief (180 - 350 Bar)	S
<a href="#">5Kit126210</a>	Relief Valve Blanking Plug	ST

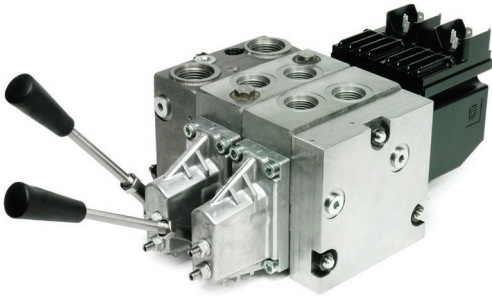
## TIE ROD KITS

MODEL	DESCRIPTION
<a href="#">5TIR112215</a>	1 Section
<a href="#">5TIR112268</a>	2 Section
<a href="#">5TIR112321</a>	3 Section
<a href="#">5TIR112374</a>	4 Section
<a href="#">5TIR112427</a>	5 Section
<a href="#">5TIR112480</a>	6 Section
<a href="#">5TIR112533</a>	7 Section
<a href="#">5TIR112586</a>	8 Section

> SEE PAGE OVER FOR DPC 200 SPECIFICATIONS CONTINUED....

# WORKING SECTION - SPOOLS

MODEL	DESCRIPTION	CODE
3CU4510051	D/A, 3 pos, A & B Closed in Neutral (Cylinder Spool) 50 l/min	101
3CU4510101	D/A, 3 pos, A & B Closed in Neutral (Cylinder Spool) 100 l/min	102
3CU4510151	D/A, 3 pos, A & B Closed in Neutral (Cylinder Spool) 150 l/min	103
3CU4510201	D/A, 3 pos, A & B Closed in Neutral (Cylinder Spool) 200 l/min	104
3CU4524050	D/A, 3 pos, A & B Open in Neutral (Motor Spool) 50 l/min	201
3CU4524100	D/A, 3 pos, A & B Open in Neutral (Motor Spool) 100 l/min	202
3CU4524150	D/A, 3 pos, A & B Open in Neutral (Motor Spool) 150 l/min	203
3CU4524200	D/A, 3 pos, A & B Open in Neutral (Motor Spool) 200 l/min	204
3CU4530050	S/A on A, B Port Plugged 50 l/min	301
3CU4530100	S/A on A, B Port Plugged 100 l/min	302
3CU4530150	S/A on A, B Port Plugged 150 l/min	303
3CU4530200	S/A on A, B Port Plugged 200 l/min	304



# VALVES

## Sectional Valve Load Sense Valve

> Custom Built to Order

*Danfoss*

# PVG 32

INLET FLOW (l/min)	PRESSURE BAR	P (UNO)	T (UNO)	LS (UNO)	A&B (UNO)
140	350	$\frac{7}{8}$ "	1 $\frac{1}{10}$ "	$\frac{9}{16}$ "	$\frac{7}{8}$ "

> CIRCUIT TYPES:

Open Centre  
Closed Centre  
Load Sense

> CONTROL TYPES:

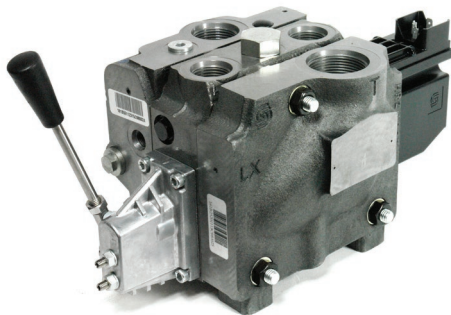
Manual Lever  
Friction Detent  
Hydraulic Pilot  
Electronic ON / OFF  
Electronic Proportional - Basic  
- Fault Monitoring Active / Passive

> SPOOL OPTIONS:

Double Acting Cylinder  
Double Acting Motor

> PORT RELIEF OPTIONS:

Anti-Cavitation  
Load Sense



# VALVES

## Sectional Valve Load Sense Valve

> Custom Built to Order

*Danfoss*

## PVG 100

INLET FLOW (l/min)	PRESSURE BAR	P (UNO)	T (UNO)	LS (UNO)	A&B (UNO)
250	350	1 <sup>5</sup> / <sub>16</sub> "	1 <sup>5</sup> / <sub>8</sub> "	<sup>9</sup> / <sub>16</sub> "	1 <sup>1</sup> / <sub>16</sub> "

> CIRCUIT TYPES:

Open Centre  
Closed Centre  
Load Sense

> CONTROL TYPES:

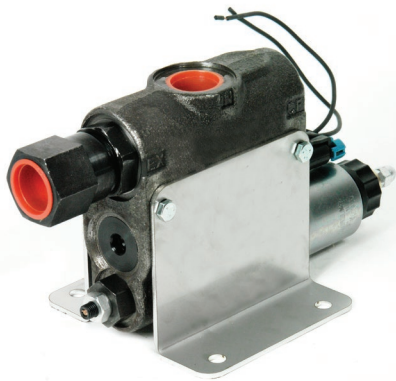
Manual Lever  
Friction Detent  
Hydraulic Pilot  
Electronic ON / OFF  
Electronic Proportional - Basic  
- Fault Monitoring Active / Passive

> SPOOL OPTIONS:

Double Acting Cylinder  
Double Acting Motor

> PORT RELIEF OPTIONS:

Anti-Cavitation  
Load Sense



# VALVES

## Electronic Flow Control

- > 2 or 3 Port Pressure Compensated Flow Control
- > 0 - 30 GPM
- > 207 Bar Rated
- > 1 1/16" UNO Ports
- > 12 or 24V DC



# EFC

### EFC ORDERING CODE EXAMPLE

EFC     -     12     30     24     R28

#### REVERSE FLOW

C = Free Reverse Flow  
Omit = No Reverse Flow

#### PORT SIZE

12 = #12SAE (1-1/16 - 12)

#### FLOW SETTING

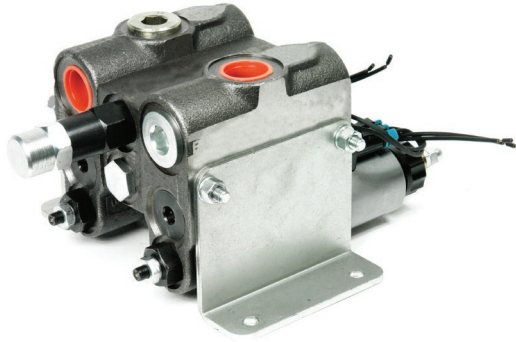
05 = 0-5gpm (18.9 lpm)  
10 = 0-10gpm (37.8 lpm)  
15 = 0-15gpm (56.8 lpm)  
20 = 0-20gpm (75.7 lpm)  
25 = 0-25gpm (94.6 lpm)  
30 = 0-30gpm (113.6 lpm)

#### COIL VOLTAGE & TERMINAL

12 = 12V DC  
24 = 24V DC  
PF = Weather Pack, Female Shroud with Male Pin  
PM = Weather Pack, Male Tower with Female Pin

#### OPTIONS

2P = 2 Port  
R15 = Relief Set at 1500 psi (103.4 Bar) (Specify Pressure in 100 psi increments)  
.093 = 0.093 Dashpot Orifice  
.020 = 0.020 Dashpot Orifice



# VALVES

## Electronic Flow Control (Series)

- > Pressure Compensated Flow Control in Series
- > 0 - 30 GPM
- > 207 Bar Rated
- > 1  $\frac{1}{16}$  " UNO Ports
- > 12 or 24V DC
- > Contact Us for Available Configurations

**BRAND**  
**HYDRAULICS Co.**  
Made in the Heartland of America

# SEFC



# VALVES

**Diverter Valve  
Electric Diverter**

- > Rated 200 Bar - 315 Bar Drained
- > Complete with Drain Kit\*
- > Hirschmann Plugs not included
- > Standard Spools are Open on Changeover (A). Closed on Changeover (B)



## DFE (SOLENOID TYPE)

MODEL	CODE	FLOW (l/min)	PORTS	PORT SIZE (BSPP)	VOLTAGE
<a href="#">12A240020</a>	DFE050	60	3A	3/8"	12V DC
<a href="#">12A240040</a>	DFE050	60	3A	3/8"	24V DC
<a href="#">12A270026</a>	DFE052	60	6B	3/8"	12V DC
<a href="#">12A270031</a>	DFE052	60	6B	3/8"	24V DC
<a href="#">12A270028*</a>	DFE052	60	6B	3/8"	12V DC
<a href="#">12B010005</a>	DFE052	60	8B	3/8"	12V DC
<a href="#">12B020025</a>	DFE5	60	8B	3/8"	24V DC
<a href="#">12A440013</a>	DFE10	90	3A	1/2"	12V DC
<a href="#">12A440025</a>	DFE10	90	3A	1/2"	24V DC
<a href="#">12A480013</a>	DFE10	90	6B	1/2"	12V DC
<a href="#">12A480025</a>	DFE10	90	6B	1/2"	24V DC
<a href="#">12A640014</a>	DFE20	140	3A	3/4"	12V DC
<a href="#">12A640026</a>	DFE20	140	3A	3/4"	24V DC
<a href="#">12A680014</a>	DFE20	140	6B	3/4"	12V DC
<a href="#">12A680026</a>	DFE20	140	6B	3/4"	24V DC
<a href="#">12C060009</a>	DFE140	80	6B	1/2"	12V DC
<a href="#">12C060004</a>	DFE140	80	6B	1/2"	24V DC

## SPARE PARTS

MODEL	DESCRIPTION	VOLTAGE
<a href="#">4SOL515012</a>	DFE052 / DFE5	12V DC
<a href="#">4SOL515024</a>	DFE052 / DFE5	24V DC
<a href="#">4SOL516012</a>	DFE10	12V DC
<a href="#">4SOL516024</a>	DFE10	24V DC
<a href="#">4SOL519112</a>	DFE20 / DFE140	12V DC
<a href="#">4SOL519124</a>	DFE20 / DFE140	24V DC

# SPARE PARTS CONT.

## MODEL

## DESCRIPTION

<a href="#">5GIU001</a>	Drain Kit for DFE050
<a href="#">5GIU004</a>	Drain Kit for DFE10
<a href="#">5GIU007</a>	Drain Kit for DFE20
<a href="#">5SOL515000</a>	Coil Armature for DFE052
<a href="#">5SOL516000</a>	Coil Armature for DFE10
<a href="#">5SOL519003</a>	Coil Armature for DFE20/140
<a href="#">4102192</a>	Hershman 3 Pin LED Plug 12-32V DC





# VALVES

## Diverter Valve Electric Diverter

- > Electric Diverter Valves
- > Din Plugs on Coils



# L7

MODEL	FLOW (l/min)	PORTS	PORT SIZE (BSPP)	VOLTAGE	MAX PRESSURE BAR
<a href="#">L7053113NIOB010</a>	50	3	3/8"	12V DC	250
<a href="#">L7053113NIOC010</a>	50	3	3/8"	24V DC	250
<a href="#">L7054113NIOB010</a>	90	3	1/2"	12V DC	310
<a href="#">L7054113NIOC010</a>	90	3	1/2"	24V DC	310
<a href="#">L7213116BIOB010</a>	50	6	3/8"	12V DC	310
<a href="#">L7213116BIOC010</a>	50	6	3/8"	24V DC	310
<a href="#">L7214116BIOB010</a>	90	6	1/2"	12V DC	250
<a href="#">L7214116BIOC010</a>	90	6	1/2"	24V DC	250
<a href="#">L7534146BIOC010</a>	90	6	1/2"	24V DC	250
<a href="#">L7535146BIOB010</a>	100	6	3/4"	12V DC	250
<a href="#">L7535146BIOC010</a>	100	6	3/4"	24V DC	250

## SPARE PARTS

MODEL	DESCRIPTION	VOLTAGE
<a href="#">2710520</a>	Coil Small	12V DC
<a href="#">2710521</a>	Coil Small	24V DC
<a href="#">2810617</a>	Coil Large	12V DC
<a href="#">2810618</a>	Coil Large	24V DC
<a href="#">4102191</a>	Hershman 3 Pin LED Plug 12-32V DC	



# VALVES

## Diverter Valve Electric Diverter

- > Electric Diverter Valves
- > Din Plugs on Coils



## SVE

MODEL	FLOW (l/min)	PORTS	PORT SIZE (BSPP)	VOLTAGE	MAX PRESSURE BAR
<a href="#">HC SVE05312V</a>	50	3	3/8"	12V DC	350
<a href="#">HC SVE05324V</a>	50	3	3/8"	24V DC	350
<a href="#">HC SVE05612V</a>	50	6	3/8"	12V DC	350
<a href="#">HC SVE05624V</a>	50	6	3/8"	24V DC	350
<a href="#">HC SVE08312V</a>	80	3	1/2"	12V DC	350
<a href="#">HC SVE08324V</a>	80	3	1/2"	24V DC	350
<a href="#">HC SVE08612V</a>	80	6	1/2"	12V DC	350
<a href="#">HC SVE08624V</a>	80	6	1/2"	24V DC	350
<a href="#">HC SVE12312V</a>	120	3	3/4"	12V DC	350
<a href="#">HC SVE12324V</a>	120	3	3/4"	24V DC	350
<a href="#">HC SVE12612V</a>	120	6	3/4"	12V DC	350
<a href="#">HC SVE12624V</a>	120	6	3/4"	24V DC	350

## SPARE PARTS

MODEL	DESCRIPTION	MODEL	VOLTAGE
<a href="#">HC 413171211</a>	Coil 3/8" Valves	53/56	12V DC
<a href="#">HC 413171215</a>	Coil 3/8" Valves	83/83/123/126	12V DC
<a href="#">HC 413172410</a>	Coil 3/8" Valves	53/56	24V DC
<a href="#">HC 413172414</a>	Coil 3/8" Valves	83/83/123/126	24V DC
<a href="#">4102192</a>	Hershman 3 Pin LED Plug 12-32V DC		



# VALVES

**Diverter Valve  
Electric Diverter**

***Badestnost***  
hydraulic components

- > Open Centre on Change Over
- > Din Plug not Included
- > \*315 Bar with Case Drain Connected Standard 250 Bar - Both Models are Stackable

## DVS & SVV

MODEL	DESCRIPTION	PORT SIZE (BSPP)	NOMINAL FLOW (l/min)	MAX PRESSURE BAR
<a href="#">DVS6-6/2-L-12DC-G38</a>	6 Port	3/8"	50	*315
<a href="#">DVS6-6/2-L-24DC-G38</a>	6 Port	3/8"	50	*315
<a href="#">SVV-90-6/2-D12</a>	6 Port	1/2"	90	*315
<a href="#">SVV-90-6/2-D24</a>	6 Port	1/2"	90	*315

## SPARE PARTS

MODEL	DESCRIPTION
<a href="#">4100581</a>	12V Coil DVS6-6
<a href="#">4101676</a>	24V Coil DVS6-6
<a href="#">4101171</a>	12V Coil SVV90-6
<a href="#">4101677</a>	24V Coil SVV90-6
<a href="#">4102192</a>	Hershman 3 Pin LED Plug 12-32V DC



# VALVES

## Diverter Valve Manual Diverter

> Complete with Handles



## DF (SPOOL TYPE)

MODEL	CODE	FLOW (l/min)	PORTS	PORT SIZE (BSPP)	SPOOL CONTROL (A SIDE)
<a href="#">122052040</a>	DF5/3	60	3A	3/8"	Detent
<a href="#">122054040</a>	DF5/3	60	3A	3/8"	Spring (Pull to Work)
<a href="#">122050078</a>	DF5/3	60	3A	3/8"	Spring (Push to Work)
<a href="#">122054020</a>	DF5/3	60	3	3/8"	Without Lever Box / Dust Proof Plate (Pull to Work)
<a href="#">122084040</a>	DF5/6	60	6A	3/8"	Spring (Pull to Work)
<a href="#">124052040</a>	DF10/3	90	3A	1/2"	Detent
<a href="#">124054040</a>	DF10/3	90	3A	1/2"	Spring (Pull to Work)
<a href="#">124050016</a>	DF10/3	90	3B	1/2"	Cam
<a href="#">124054021</a>	DF10/3	90	3A	1/2"	Without Lever Box / Dust Proof Plate (Pull to Work)
<a href="#">124084040</a>	DF10/6	90	6A	1/2"	Spring (Pull to Work)
<a href="#">124084020</a>	DF10/6	90	6	1/2"	Without Lever Box / Dust Proof Plate (Pull to Work)
<a href="#">126052040</a>	DF20/3	140	3A	3/4"	Detent
<a href="#">126054040</a>	DF20/3	140	3A	3/4"	Spring (Pull to Work)
<a href="#">126082040</a>	DF20/6	140	6A	3/4"	Detent
<a href="#">126085603</a>	DF22/6	180	6	3/4"	12V DC
<a href="#">126089240</a>	DF22/6	180	6A	3/4"	24V DC
<a href="#">127052040</a>	DF25/3	220	3A	1"	Detent

## SPARE PARTS

MODEL	DESCRIPTION
<a href="#">5V17105000</a>	DF5 17 Kit (Pull to Work)
<a href="#">5V12105000</a>	DF5 12 Kit (Detent)
<a href="#">5V17110000</a>	DF10 17 Kit (Pull to Work)
<a href="#">5V17120000</a>	DF20 17 (Pull to Work)
<a href="#">5V18405110</a>	DF5 18ME (Push to Work)
<a href="#">5V12120000</a>	DF20 Kit 12 (Detent)



# VALVES

## Diverter Valve Manual Diverter



## DH (ROTARY TYPE)

MODEL	CODE	FLOW (l/min)	PORTS	PORT SIZE (BSPP)
<a href="#">132031110</a>	DH5/3	60	3A	3/8"
<a href="#">132041110</a>	DH5/4	60	4A	3/8"
<a href="#">132061110</a>	DH5/6	60	6A	3/8"
<a href="#">134031110</a>	DH10/3	90	3A	1/2"
<a href="#">134041110</a>	DH10/4	90	4A	1/2"
<a href="#">134041210</a>	DH10/4B	90	4B	1/2"
<a href="#">134061110</a>	DH10/6	90	6A	1/2"
<a href="#">136031110</a>	DH20/3	140	3A	3/4"
<a href="#">136061110</a>	DH20/6	140	6A	3/4"
<a href="#">137031110</a>	DH25/3	200	3A	1"
<a href="#">137061110</a>	DH25/6	200	6A	1"



> Cam Roller Diverter

## DFC

MODEL	FLOW (l/min)	PORTS	PORT SIZE (BSPP)	MAX PRESSURE BAR
<a href="#">122050023</a>	60	3B	3/8"	315
<a href="#">122080018</a>	60	6B	3/8"	315



> Spool Type Diverter

# VALVES

**Diverter Valve  
Manual Diverter**



## SVM

MODEL	FLOW (l/min)	PORTS	PORT SIZE (BSPP)	MAX PRESSURE BAR
<a href="#">HC SVM053</a>	50	3	3/8"	350
<a href="#">HC SVM056</a>	50	6	3/8"	350
<a href="#">HC SVM083</a>	80	3	1/2"	350
<a href="#">HC SVM086</a>	80	6	1/2"	350
<a href="#">HC SVM123</a>	120	3	3/4"	350
<a href="#">HC SVM126</a>	120	6	3/4"	350

## SPARE PARTS

MODEL	DESCRIPTION	SERIES
<a href="#">HC 320316001</a>	Handle Box	083/86
<a href="#">HC 320328001</a>	Handle Box	053/56
<a href="#">HC 320329001</a>	Handle Box	123/126
<a href="#">HC 320816001</a>	Detent Kit	083/086
<a href="#">HC 320829001</a>	Detent Kit	123/126



# VALVES

**Diverter Valve  
Manual Diverter**



## PUSH / PULL

MODEL	FLOW (l/min)	PORTS	PORT SIZE (UNO)
<u>SS-4A1D</u>	75	3	7/8"



# VALVES

## Diverter Valve Manual Diverter

- > Valves can be Bolted Back to Back to give a 6 Port Rotary Diverter
- > Open Centre on Change Over

**Badestnost**  
hydraulic components

## 3 WAY ROTARY DIVERTER VALVE

MODEL	DESCRIPTION	PORT SIZE (BSPP)	NOMINAL FLOW (l/min)	MAX PRESSURE BAR
<a href="#">357-31-38</a>	3 Port	$\frac{3}{8}$ "	60	300
<a href="#">358-31-12</a>	3 Port	$\frac{1}{2}$ "	90	250
<a href="#">359-31-34</a>	3 Port	$\frac{3}{4}$ "	120	220



- > 40 = Closed Centre on Change Over
- > 42 = Open Centre on Change Over
- > Cannot be Stacked

## 4 WAY ROTARY DIVERTER VALVE

MODEL	DESCRIPTION	PORT SIZE (BSPP)	NOMINAL FLOW (l/min)	MAX PRESSURE BAR
<a href="#">303-40-12</a>	4 Port	$\frac{1}{2}$ "	60	320
<a href="#">303-42-12</a>	4 Port	$\frac{1}{2}$ "	90	320





# VALVES

Diverter Valve  
Manual Diverter

> Open Centre on Change Over

***Badestnost***  
hydraulic components

## SELECTOR 3 PORT PUSH / PULL

MODEL	DESCRIPTION	PORT SIZE (BSPP)	NOMINAL FLOW (l/min)	MAX PRESSURE BAR
<b>SV80AG12K</b>	3 Port	1/2"	75	210
<b>SV120AG34K</b>	3 Port	3/4"	113	210



# VALVES

## Cetop 3 Valve



- > High Performance Valves
  - 350 BAR Max Pressure
  - 210 BAR Max Pressure T Port
  - Nominal Flow 80 l/min
- > Standard Performance Valves
  - 350 BAR Max Pressure
  - 100 BAR Max Pressure T Port
  - Nominal Flow 40 l/min
- > Spare Parts Available

## CETOP 3 VALVE

### CETOP 3 VALVE ORDERING CODE EXAMPLE

DG4V3

S

0

C

MU

G

7

60

#### PERFORMANCE

S = Standard Performance

OMIT = High Performance

#### SPOOL TYPE

0 = All Ports Open on Changeover - Single Offset

2 = All Ports Closed on Changeover - Single Offset

0 = All Ports Open

2 = All Ports Blocked

6 = P Blocked, A & B to T

8 = P to T, A & B Blocked

#### SOLENOID POSITION

A = P to A, De-Energised - Single Offset

AL = P to B, De-Energised - Single Offset, Left Hand

C = Spring Centred - Standard

#### CONNECTOR TYPE

MU = Hirschman Plug

#### COIL VOLTAGE

G = 12V DC

H = 24V DC

A = 110V AC

ED = 240V AC

NN = 24V AC

#### AC / DC

7 = DC



# VALVES

## Cetop 3 Valve

- > Standard Performance Valves - 315 BAR Max Pressure
- Nominal Flow 80 l/min

- > All Valves Supplied Complete with Bolt Kits and Din Plugs with Lights
- > Spare Parts Available



## CETOP 3 VALVE

### CETOP 3 VALVE ORDERING CODE EXAMPLE

	<u>FW</u>	<u>02</u>	<u>3C2</u>	<u>D12</u>	<u>Z5L</u>	<u>50</u>
<u>MODEL</u>						
<u>VALVE SIZE</u>						
02 = Cetop 3						
<u>SPOOL TYPE</u>						
2B2B = All Ports Closed - Single Offset						
2B3B = All Ports Open - Single Offset						
2B4B = P Closed, A & B to T - Single Offset						
2B6B = P to T, A & B Closed - Single Offset						
3C2 = All Ports Closed						
3C3 = All Ports Open						
3C4 = P Closed, A & B to T						
3C6 = P to T, A & B Closed						
<u>COIL VOLTAGE</u>						
D12 = 12V DC						
D24 = 24V DC						
A110 = 110V AC						
A220 = 220V AC						
<u>DIN PLUG WITH LIGHT</u>						



# VALVES

## Cetop 3 Module



## CETOP 3 MODULE

### CETOP 3 MODULE ORDERING CODE EXAMPLE

#### FUNCTIONALITY

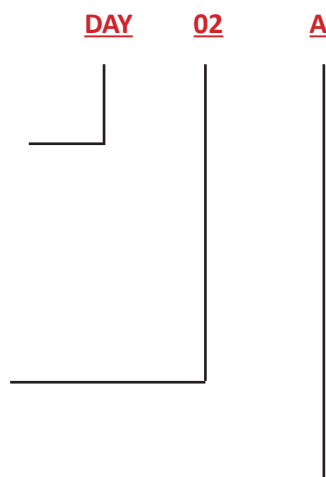
DAY - Pilot Check  
DLA - Flow Control  
DY - Relief  
DYJ - Pressure Reducer  
DYP - Counter Balance

#### VALVE SIZE

Cetop 3 (02 )

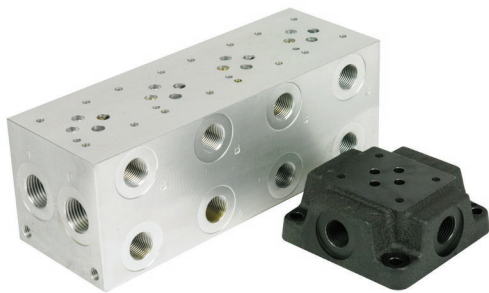
#### ACTIVATION POINT

A  
B  
W = A & B  
P



## CETOP 3 MODULE

TYPE	FUNCTION	SIZE	ACTIVATION PORT	MAX PRESSURE BAR	NOMINAL FLOW (l/min)
DAY	Pilot Check	02	A	315	45
DAY	Pilot Check	02	B	315	45
DAY	Pilot Check	02	A & B (W)	315	45
DLA	Flow Control	02	A	315	45
DLA	Flow Control	02	B	315	45
DLA	Flow Control	02	A & B (W)	315	45
DY	Relief	02	P	315	45
DY	Relief	02	A	315	45
DY	Relief	02	B	315	45
DYJ	Pressure Reducer	02	P	210	45
DYJ	Pressure Reducer	02	A	210	45
DYJ	Pressure Reducer	02	B	210	45
DYP	Counter Balance	02	A	210	40
DYP	Counter Balance	02	B	210	40



# VALVES

## Cetop 3 Subplates



## CETOP 3 ALLOY SUBPLATE

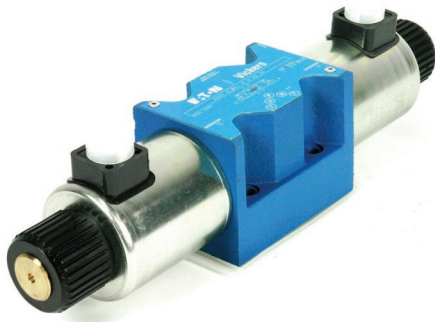
MODEL	DESCRIPTION
<a href="#">AD03-SP-S-6B</a>	Side Ports 3/8" BSPP
<a href="#">AD03-SP-RV-S-6B</a>	Side Ports c/w Relief Cavity 3/8" BSPP

## CETOP 3 CAST IRON SUBPLATE

MODEL	DESCRIPTION
<a href="#">SD03-SP-B-6B</a>	Cetop 3 3/8" BSPP Bottom Ports
<a href="#">SD03-SP-S-6B</a>	Cetop 3 3/8" BSPP Side Ports

## CETOP 3 ALLOY MANIFOLDS

MODEL	STATION	PORTS (BSPP)	RELIEF CAVITY
<a href="#">AD03-P-02-2BS</a>	2 Parallel	3/8"	T-11A
<a href="#">AD03-S-02-2BS</a>	2 Series	3/8"	T-11A
<a href="#">AD03-P-03-2BS</a>	3 Parallel	3/8"	T-11A
<a href="#">AD03-S-03-2BS</a>	3 Series	3/8"	T-11A
<a href="#">AD03-P-04-2BS</a>	4 Parallel	3/8"	T-11A
<a href="#">AD03-S-02-2BS</a>	4 Series	3/8"	T-11A



# VALVES

## Cetop 5 Valve

- > Standard Performance Valves
  - 350 BAR Max Pressure
  - 100 BAR Max Pressure T Port
  - Nominal Flow 120 l/min



- > Spare Parts Available

## CETOP 5 VALVE

### CETOP 5 VALVE ORDERING CODE EXAMPLE

DG4V5

0

C

J

MU

G

620

#### SPOOL TYPE

- 0 = All Ports Open on Changeover - Single Offset
- 2 = All Ports Closed on Changeover - Single Offset
- 0 = All Ports Open
- 2 = All Ports Blocked
- 6 = P Blocked, A & B to T
- 8 = P to T, A & B Blocked

#### SOLENOID POSITION

- A = P to A, De-Energised - Single Offset
- AL = P to B, De-Energised - Single Offset, Left Hand
- C = Spring Centred - Standard

#### AC / DC

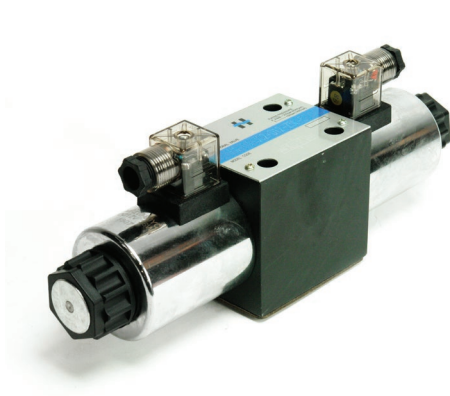
- J = DC
- OMIT = AC

#### CONNECTOR

- MU = Hirschman Plug

#### COIL VOLTAGE

- G = 12V DC
- H = 24V DC
- A = 110V AC
- ED = 240V AC



# VALVES

## Cetop 5 Valve

- > Standard Performance Valves - 315 BAR Max Pressure
- Nominal Flow 120 l/min

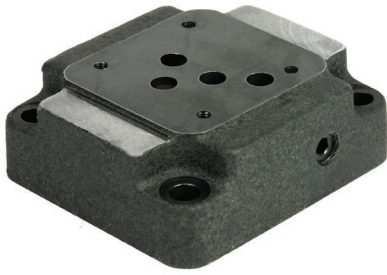
- > All Valves Supplied Complete with Bolt Kits and Din Plugs with Lights
- > Spare Parts Available



## CETOP 5 VALVE

### CETOP 5 VALVE ORDERING CODE EXAMPLE

	<u>FW</u>	<u>03</u>	<u>3C2</u>	<u>D12</u>	<u>Z5L</u>	<u>50</u>
<u>MODEL</u>						
<u>VALVE SIZE</u>						
03 = Cetop 5						
<u>SPOOL TYPE</u>						
2B2B = All Ports Closed - Single Offset						
2B3B = All Ports Open - Single Offset						
2B4B = P Closed, A & B to T - Single Offset						
2B6B = P to T, A & B Closed - Single Offset						
3C2 = All Ports Closed						
3C3 = All Ports Open						
3C4 = P Closed, A & B to T						
3C6 = P to T, A & B Closed						
<u>COIL VOLTAGE</u>						
D12 = 12V DC						
D24 = 24V DC						
A110 = 110V AC						
A220 = 220V AC						
<u>DIN PLUG WITH LIGHT</u>						



# VALVES

## Cetop 5 Subplates



## CETOP 5 CAST IRON SUBPLATE

MODEL	DESCRIPTION
<b>SD05-SP-B-8B</b>	Cetop 5 ½" BSPP Bottom Ports





# VALVES

## Handles & Levers



## H SERIES HANDLES

MODEL	DESCRIPTION	SERIES
<a href="#">2IM4000000</a>	Blank	HB000
<a href="#">2IM4000312</a>	1 Push Button (Non Latching)	HB010
<a href="#">2IM4000002</a>	2 Push Button (Non Latching)	HB020
<a href="#">2IM4000003</a>	3 Push Button (Non Latching)	HB030
<a href="#">2IM4000004</a>	4 Push Button (Non Latching)	HB040
<a href="#">2IM4000005</a>	5 Push Button (Non Latching)	HB050
<a href="#">2IM4000006</a>	6 Push Button (Non Latching)	HB060
<a href="#">2IM4000011</a>	Top Rocker Switch (Non Latching)	HB500
<a href="#">2IM4000267</a>	1 Push Button, Top Rocker Switch (Both Non Latching)	HB510
<a href="#">2IM4000273</a>	2 Push Button, Top Rocker Switch (Both Non Latching)	HB520
<a href="#">2IM4000010</a>	Top Rocker (Non Latching)	HB400
<a href="#">2IM4000264</a>	1 Push Button (Non Latching) Top Rocker (Latching)	HB410
<a href="#">2IM4000025</a>	2 Push Button (Non Latching) Top Rocker (Latching)	HB420
<a href="#">2IM4100000</a>	Dead Man Switch Only	HA000
<a href="#">2IM4100177</a>	4 Push Buttons, Top Rocker (Both Non Latching) with Dead Man Switch	HA040

## SPARE PARTS

MODEL	DESCRIPTION
<a href="#">3AST281416</a>	Hollow Stem 125mm Long - M14 / M14
<a href="#">3AS2141500</a>	Hollow Stem 150mm Long - M14 / M12
<a href="#">4DAD314150</a>	Galv. Nut M14 x 1.5mm
<a href="#">YCAV720</a>	Rocker Switch - Spring Centre
<a href="#">4ACC522</a>	Rubber Boot for Rocker Switch
<a href="#">4ACC523</a>	Rectangular Frame for Rubber Boot
<a href="#">3GIU712400</a>	Stepped Stud M12 / M10
<a href="#">4VIT212040</a>	Straight Stud M12
<a href="#">3PUL111090</a>	H Series Red Button



# VALVES

## Handles & Levers



## P SERIES HANDLES

MODEL	DESCRIPTION	SERIES
<u>2IM86M0002</u>	3 x (ON) / OFF - 1 x ON / OFF / ON - 1 x Proportional - 1 x Dead Man Switch	PZTM211
<u>2IM86M0000</u>	5 x (ON) / OFF - 1 x ON / OFF / ON - 1 x Proportional - 1 x Dead Man Switch	PZTM410



## STANDARD SERIES HANDLES

MODEL	DESCRIPTION	VALVE	THREAD	LENGTH	SERIES
<u>170011012</u>	Standard Cylindrical	SD5	M8	120	AL01
<u>170011015</u>	Standard Cylindrical	SD6	M8	150	AL01
<u>170012020</u>	Standard Cylindrical	SD11	M10	200	AL01
<u>170012025</u>	Standard Cylindrical	SD11	M10	250	AL01
<u>170013020</u>	Standard Cylindrical	SD18	M12	200	AL01
<u>170013025</u>	Standard Cylindrical	SD25	M12	250	AL01



# VALVES

## Handles & Levers



- > Ergonomic Plastic Push Button
- > Handle Only
- > Non-Latching

## RCX SERIES HANDLES

MODEL	DESCRIPTION
<u>HC 320000006</u>	No Button
<u>HC 320000009</u>	1 Button
<u>HC 320000015</u>	2 Button
<u>HC 320000021</u>	3 Button
<u>HC 320000027</u>	4 Button
<u>HC 320000033</u>	5 Button



# VALVES

## Cable Controls

- > TC / TCC Kits Require A+B+C+D
- > SCF Kits Require A+B+E

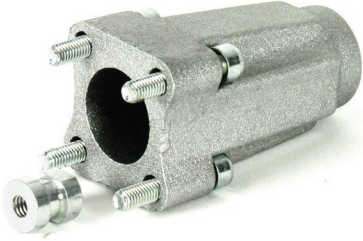


## VALVE CONNECTION (A)

MODEL	TO SUIT		CODE	VALVE
<a href="#">5TEL105005</a>	Lever End	-	TP50	SD4, SD5
<a href="#">5V08105300</a>	Spring End	Spring Return	8TCL	SD6, DF5
<a href="#">5V11105300</a>	Spring End	Detent	11TCL	DLS7
<a href="#">5TEL110005</a>	Lever End	-	TP100	SD11, SD14
<a href="#">5V08110300</a>	Spring End	Spring Return	8TCL	SDS150,SD16
<a href="#">5V11110300</a>	Spring End	Detent	11TCL	DF10
<a href="#">5TEL120005</a>	Lever End	-	TP200	SD18, SD25
<a href="#">5V08120300</a>	Spring End	Spring Return	8TCL	DF20
<a href="#">5TEL108110</a>	Lever End	-	TQ80	SD8, SDM140

## CABLES (B)

MODEL	SERIES	LENGTH (mm)
<a href="#">4CAV700500</a>	CG	500
<a href="#">4CAV700750</a>	CG	750
<a href="#">4CAV701000</a>	CG	1000
<a href="#">4CAV701250</a>	CG	1250
<a href="#">4CAV701500</a>	CG	1500
<a href="#">4CAV701750</a>	CG	1750
<a href="#">4CAV702000</a>	CG	2000
<a href="#">4CAV702250</a>	CG	2250
<a href="#">4CAV702500</a>	CG	2500
<a href="#">4CAV702750</a>	CG	2750
<a href="#">4CAV703000</a>	CG	3000
<a href="#">4CAV703500</a>	CG	3500
<a href="#">4CAV704000</a>	CG	4000
<a href="#">4CAV704500</a>	CG	4500
<a href="#">4CAV705000</a>	CG	5000
<a href="#">4CAV706000</a>	CG	6000



# VALVES

## Cable Controls

- > TC / TCC Kits Require A+B+C+D
- > SCF Kits Require A+B+E
- > To Suit Models - SD4, SD5, SD6, DLS7, DF5



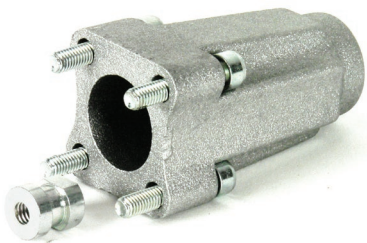
## LEVER CONTROL KIT (C)

MODEL	DESCRIPTION	CODE
<u>5TEL005005</u>	Control Connection Kit	GP50



## LEVER CONTROL BANK (D)

MODEL	DESCRIPTION	SERIES	TYPE
<u>172110100</u>	Lever Control Bank	TCC5 / 1ML	Spring
<u>172100200</u>	Lever Control Bank	TCC5 / 2ML / ML	Spring



# VALVES

## Cable Controls

> TC / TCC Kits Require A+B+C+D

> SCF Kits Require A+B+E

> To Suit Models - SD8, SD11, SDM140, SD14, SD18, SDM141, DLM142, SDS150, SD16, SD25, DF10, DF20



## LEVER CONTROL KIT (C)

MODEL	DESCRIPTION	CODE
<u>STEL010005</u>	Control Connection Kit	<u>GP100</u>



## LEVER CONTROL BANK (D)

MODEL	DESCRIPTION	SERIES	TYPE
<u>174110100</u>	Lever Control Bank	TCC10 / 1ML	<u>Spring</u>
<u>174100200</u>	Lever Control Bank	TCC10 / 2ML / 2ML	<u>Spring</u>



# VALVES

## Cable Controls

> TC / TCC Kits Require A+B+C+D

> SCF Kits Require A+B+E



## CABLE JOYSTICK (E)

MODEL	HANDLE TYPE	CODE
<a href="#">179030001</a>	Plain (No Switch)	SCF030/02/V00
<a href="#">179030002</a>	Push Button (Non Latching)	SCF030/02/V20
<a href="#">179030010</a>	Rocker Switch (Non Latching)	SCF030/02/Y

## SPARE PARTS

MODEL	HANDLE TYPE
<a href="#">5CIN305</a>	SCF030 Kinematic Kit
<a href="#">3SOF204100</a>	SCF030 Rubber Boot
<a href="#">5IMP030000</a>	Handle V00 Plain No Button (Rubber)
<a href="#">5IMP032000</a>	Handle V20 Top Push Button - Non Latching (Rubber)
<a href="#">5COR211761</a>	SCF030/02 Body Kit with Central Lock



# VALVES

Hydraulic Pilot  
Controls



## SV HYDRAULIC SERIES

MODEL	DESCRIPTION	CODE
<a href="#">S01B001A01W0</a>	Monoblock Dual Axis Proportional Joystick (5.8 - 22 Bar)	SV01-B/01W-001AX4
<a href="#">S10B001A01G0</a>	Monoblock Single Axis 1 Section	SV01-B/01G-001AX2
<a href="#">S60B001C0100</a>	Monoblock Pilot Valve Single Pedal	SV60-B001C
<a href="#">181520003</a>	Monoblock Pilot Valve with Rocker Pedal	SVP500-B/01-130BX2

## SPARE PARTS

MODEL	DESCRIPTION	CODE
<a href="#">3SOF1A6820</a>	Rubber Bellow	SV01
<a href="#">3SOF190781</a>	Rubber Bellow	SV10
<a href="#">3SOF138184</a>	Top Shield Knob (Rocker)	SV01
<a href="#">3PUL128340</a>	Rocker	AL17/AL16/AL19





# VALVES

## Hydraulic Pilot Controls



- > Single Axis Pilot Joystick
- > Max Oil Flow 16 l/min
- > Max Pressure - 100 Bar
- > 1/4" BSPP Ports

## RCM SERIES

MODEL	DESCRIPTION	CONTROL RANGE (BAR)
<a href="#">HC RCM/101A02MAMWE95RAG02</a>	Remote Spring Centre	5-25
<a href="#">HC RCM/101A03MAMWE95RAG02</a>	Remote Spring Centre	2-13
<a href="#">HC RCM/101A06MAMWE95RAG02</a>	Remote Spring Centre	4-17
<a href="#">HC RCM/101A08MAMWE95RAG02</a>	Remote Spring Centre	2-18
<a href="#">HC RCM/106A03MAMWE95RAG02</a>	Remote Friction Detent	2-13
<a href="#">HC RCM/106A06MAMWE95RAG02</a>	Remote Friction Detent	4-17
<a href="#">HC RCM/106A08MAMWE95RAG02</a>	Remote Friction Detent	2-18

## SPARE PARTS

MODEL	DESCRIPTION	CODE
<a href="#">HC 321800001</a>	Spring 5-25 Bar	A02
<a href="#">HC 321800004</a>	Spring 5.8-19.5 Bar	A01
<a href="#">HC 321800006</a>	Spring 2-13 Bar	A03
<a href="#">HC 321800009</a>	Spring 4-17 Bar	A06
<a href="#">HC 321800010</a>	Spring 5-15 Bar	A07
<a href="#">HC 321800011</a>	Spring 2-18 Bar	A08
<a href="#">HC 423403058</a>	Rubber Bellow	
<a href="#">HC 413042701</a>	Lever Knob	



# VALVES

## Hydraulic Pilot Controls



- > Dual Axis Pilot Joystick
- > Max Oil Flow 12 l/min
- > Max Pressure - 100 Bar
- > 1/4" BSPP Ports

## RCX SERIES

MODEL	DESCRIPTION	CONTROL RANGE (BAR)	BUTTONS
<a href="#">HC RCX01A06MAF00F00R2WF53RAG</a>	Remote Pilot Joystick	4-17	0
<a href="#">HC RCX01A06MAF00F00R2WF53RAG</a>	Remote Pilot Joystick	4-17	1
<a href="#">HC RCX01A06MAF00F00R2WF53RAG</a>	Remote Pilot Joystick	4-17	2
<a href="#">HC RCX01A06MAF00F00R2WF53RAG</a>	Remote Pilot Joystick	4-17	3
<a href="#">HC RCX01A06MAF00F00R2WF53RAG</a>	Remote Pilot Joystick	4-17	4
<a href="#">HC RCX01A06MAF00F00R2WF53RAG</a>	Remote Pilot Joystick	4-17	5

## SPARE PARTS

MODEL	DESCRIPTION	CODE
<a href="#">HC 321800001</a>	Spring 5-25 Bar	A02
<a href="#">HC 321800004</a>	Spring 5.8-19.5 Bar	A01
<a href="#">HC 321800006</a>	Spring 2-13 Bar	A03
<a href="#">HC 321800009</a>	Spring 4-17 Bar	A06
<a href="#">HC 321800010</a>	Spring 5-15 Bar	A07
<a href="#">HC 321800011</a>	Spring 2-18 Bar	A08
<a href="#">HC 423403015</a>	Rubber Bellow	
<a href="#">HC 413042701</a>	Lever Knob	



# VALVES

## Electronic Controls

- > 8 - 32V DC Supply Voltage
- > Dead Man Switch Management
- > Float Function Management
- > Fast/Slow Function Management
- > Analog and Digital Inputs
- > IP67 Rated
- > Control Output Range 100 - 300mA



## CED 400X

MODEL	DESCRIPTION
-------	-------------

**183331004**

**CED400X ECU 4 Proportional Functions 8 x 2A Outputs**



- > Dual Axis Control
- > Analog Output 0.5 - 4.5V (2.5V in Neutral)
- > Joystick IP65 Rated
- > Deadman Switch IP67 Rated

## AJW JOYSTICK

MODEL	CONTROL OPTIONS
-------	-----------------

**183540028**

**Dual Axis, 2 x Proportional Rocker Switch, 1 x ON / OFF Push Button**

**183540069**

**Dual Axis, 2 x Proportional Rocker Switch, 2 x ON / OFF Push Button**

