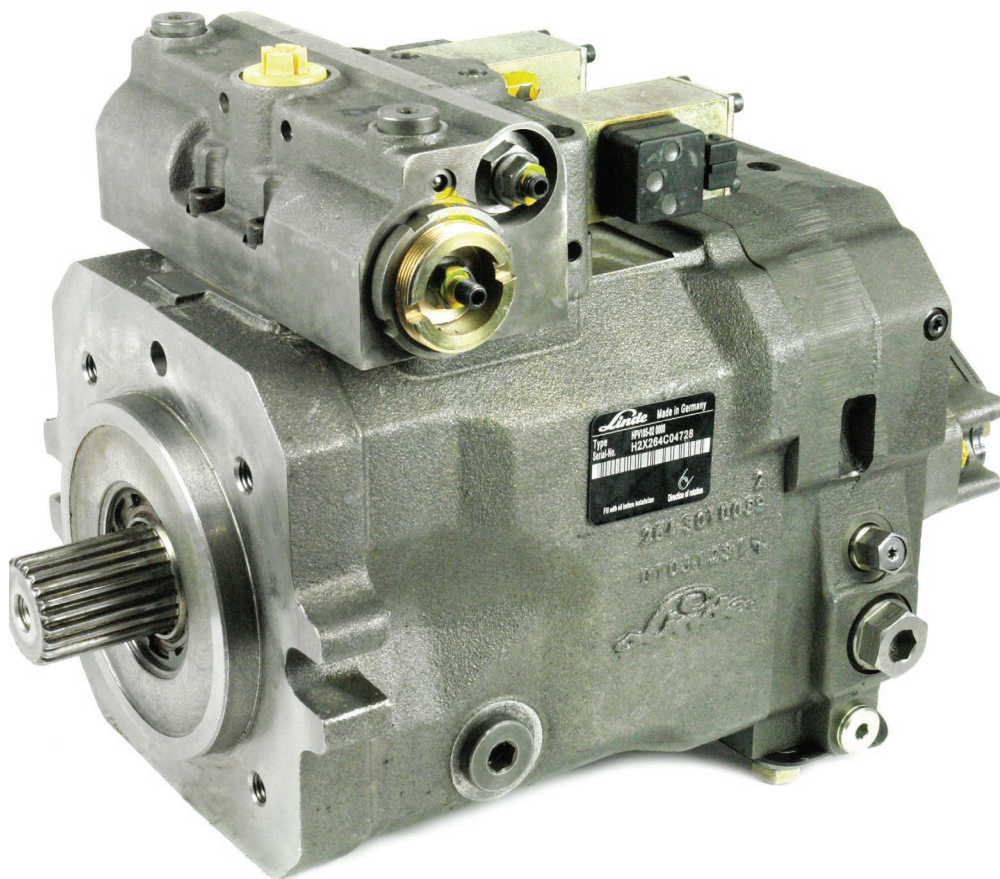


PUMPS



DISCLAIMER

- > All performance and specification figures are where possible taken from the latest documentation and may vary from older literature versions.
- > Product photos shown are indicative only. Actual products may differ from that shown.
- > Failure or improper selection or improper use of the products described herein or related items can cause death, personal injury and property damage. Whilst every reasonable effort has been made to ensure that the information contained herein is accurate, no warranty is given that it is free from error or omission. Windust Hydraulic Services Ltd will not accept liability for any injury, loss or damage arising directly or indirectly from any use or reliance on this information.

PUMPS

Index

PRODUCT

BRAND

MODEL

Gear Pump (Aluminium)	Marzocchi	Group 1
Gear Pump (Aluminium)	Marzocchi	Group 2 Euro
Gear Pump (Aluminium)	Marzocchi	Group 2 SAE
Gear Pump (Aluminium)	Marzocchi	Group 3 Euro
Gear Pump (Aluminium)	Ronzio	Group 1 Euro
Gear Pump (Aluminium)	Ronzio	Group 2 Euro
Gear Pump (Aluminium)	Ronzio	Group 2 SAE
Gear Pump (Aluminium)	Ronzio	Group 2 German PCD
Gear Pump (Aluminium)	Ronzio	Group 2 German D3 PCD
Gear Pump (Aluminium)	Ronzio	Group 2 German M3 PCD
Gear Pump (Aluminium)	Ronzio	Group 3 Euro
Gear Pump (Aluminium)	Ronzio	Group 3 SAE
Gear Pump (Aluminium)	Prince	Group 2 SAE

Gear Pump (Cast Iron)	Ronzio	Group 3 Euro
Gear Pump (Cast Iron)	Permco	P124 Bush
Gear Pump (Cast Iron)	Permco	P197 Bush
Gear Pump (Cast Iron)	Permco	P257 Bush
Gear Pump (Cast Iron)	Permco	P360 Bush
Gear Pump (Cast Iron)	Permco	P2100 Bearing
Gear Pump (Cast Iron)	Permco	P3100 Bearing
Gear Pump (Cast Iron)	Permco	P5100 Bearing
Gear Pump (Cast Iron)	Permco	P7600 Bearing
Gear Pump (Cast Iron)	Permco	P2500 (25x) Bearing
Gear Pump (Cast Iron)	Permco	P3700 (37x) Bearing

Gear Pump (PTO)	Ronzio	ISO
Gear Pump (PTO)	Ronzio	UNI

Multiple Gear Pump (Aluminium)	Marzocchi	Group 1.5 Euro
Multiple Gear Pump (Aluminium)	Marzocchi	Group 2 Euro
Multiple Gear Pump (Aluminium)	Marzocchi	Group 2 SAE
Multiple Gear Pump (Aluminium)	Marzocchi	Group 3 Euro
Multiple Gear Pump (Aluminium)	Ronzio	Group 1 Euro
Multiple Gear Pump (Aluminium)	Ronzio	Group 2 Euro
Multiple Gear Pump (Aluminium)	Ronzio	Group 2 SAE
Multiple Gear Pump (Aluminium)	Ronzio	Group 2 German PCD
Multiple Gear Pump (Aluminium)	Ronzio	Group 2 German D3 PCD
Multiple Gear Pump (Aluminium)	Ronzio	Group 2 German M3 PCD
Multiple Gear Pump (Aluminium)	Ronzio	Group 3 Euro
Multiple Gear Pump (Aluminium)	Ronzio	Group 3 SAE

PRODUCT**BRAND****MODEL**

Multiple Gear Pump (Cast Iron)	Permco	P124 Bush
Multiple Gear Pump (Cast Iron)	Permco	P197 Bush
Multiple Gear Pump (Cast Iron)	Permco	P257 Bush
Multiple Gear Pump (Cast Iron)	Permco	P360 Bush
Multiple Gear Pump (Cast Iron)	Permco	P2100 Bearing
Multiple Gear Pump (Cast Iron)	Permco	P3100 Bearing
Multiple Gear Pump (Cast Iron)	Permco	P5100 Bearing
Multiple Gear Pump (Cast Iron)	Permco	P7600 Bearing

Gear Pump Special Assembly Build	Ronzio	Group 2
Gear Pump Special Assembly Build	Permco	P124, P197 Bush
Gear Pump Special Assembly Build	Permco	P257, P360 Bush
Gear Pump Special Assembly Build	Permco	P2100, P3000, P3100 Bearing
Gear Pump Special Assembly Build	Permco	P5000, P5100, P7500, P7600 Bearing
Gear Pump Special Assembly Build	Permco	Dry Valve Option

Vane Pump (Single)	Veljan	VT6CM
Vane Pump (Single)	Veljan	VT6DM
Vane Pump (Single)	Veljan	VT6EM
Vane Pump (Single)	Vickers	V10
Vane Pump (Single)	Vickers	V20
Vane Pump (Single)	Vickers	VTM42 Steering
Vane Pump (Double)	Veljan	VT6CCM
Vane Pump (Double)	Veljan	VT6DCM
Vane Pump (Double)	Veljan	VT6ECM
Vane Pump (Double)	Veljan	VT6EDM
Vane Pump (Triple)	Veljan	VT6DCCM

Piston Pump	Linde	HPV - Variable Displacement
Piston Pump	Linde	HPR - Regulated Displacement
Piston Pump	A10V	Genuine Re-manufactured A10V
Piston Pump	Cassapa	MVP - Variable Displacement
Piston Pump	Sauer Danfoss	PV20 Series - Variable Displacement
Piston Pump	Sauer Danfoss	90 Series - Variable Displacement
Piston Pump	Vickers	PVB - Variable Displacement
Piston Pump	Vickers	PVE - Variable Displacement
Piston Pump	Vickers	PVH - Variable Displacement
Piston Pump	Vickers	TA 1919 Hydra-Static Tandem
Piston Pump	Sunfab	SC DIN - Fixed Displacement
Piston Pump	Sunfab	SC SAE - Fixed Displacement
Piston Pump	Sunfab	SAP - Fixed Displacement
Piston Pump	Sunfab	SL Dual - Fixed Displacement
Piston Pump	Sunfab	SVH - Variable Displacement

Hand Pump	Badestnost	Tankless Hand Pump, Hand Pump 1 Way
Hand Pump	Badestnost	Tank 1 Way, Hand Pump 2 Way S/A
Hand Pump	Badestnost	Hand Pump 2 Way S/A, Tank 2 Way



PUMPS

Gear Pump (Aluminium)



- > SHAFT: 1.8 taper 26.3 Nm
- > SPIGOT: 25.4mm
- > MOUNT: Euro 4 Bolt 71.9 x 52.4mm
- > PORTS: 3/8" BSPP

> Front Cover Change Needed to Change Direction of Rotation

> D = CW Rotation

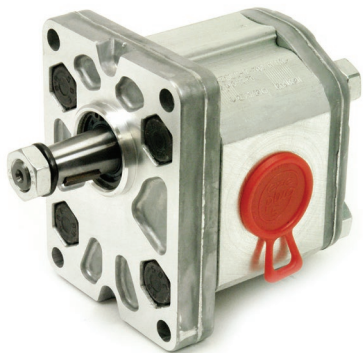
> S = CCW Rotation

GROUP 1

MODEL	CC/REV	MAX RPM	MAX PRESSURE BAR		
			Continuous	Intermittent	Peak
<u>1PD16GAS</u>	1.1	6000	230	250	270
<u>1PD20GAS</u>	1.3	6000	230	250	270
<u>1PD25GAS</u>	1.6	6000	230	250	270
<u>1PD33GAS</u>	2.1	6000	230	250	270
<u>1PD42GAS</u>	2.7	6000	230	250	270
<u>1PD50GAS</u>	3.2	5000	210	230	250
<u>1PD58GAS</u>	3.7	4500	210	230	250
<u>1PD67GAS</u>	4.2	4000	210	230	250
<u>1PD75GAS</u>	4.8	3500	190	210	230
<u>1PD92GAS</u>	5.8	3000	190	210	230
<u>1PD115GAS</u>	8.0	2100	160	180	200

SPARE PARTS

MODEL	DESCRIPTION
<u>601564</u>	Relief Valve in Rear Cover Relieving to Suction
<u>601505</u>	Seal Kit
<u>524198</u>	Shaft Seal Only



PUMPS

Gear Pump (Aluminium)

- > SHAFT: 1.8 taper 150 Nm
- > SPIGOT: 36.5mm
- > MOUNT: Euro 4 bolt 96 x 71.55mm
- > PORTS: PCD Port sizes

6 - 13	30 x 30
16 - 40	40 x 30
50	40 x 40
- > BSPP Ports Available
- > D = CW Rotation
- > S = CCW Rotation



GROUP 2 EURO

MODEL	CC/REV	MAX RPM	MAX PRESSURE BAR		
			Continuous	Intermittent	Peak
ALP2D6T3	4.5	4000	250	270	290
ALP2D9T3	6.4	4000	250	270	290
ALP2D10T3EP	7.0	4000	250	270	290
ALP2D12T3EP	8.3	3500	250	270	290
ALP2D13T3EP	9.6	3000	250	270	290
ALP2D16T3EP	11.5	4000	230	250	270
ALP2D20T3EP	14.1	4000	230	250	270
ALP2D22T3EP	16.0	4000	210	225	240
ALP2D25T3EP	17.9	3600	210	225	240
ALP2D30T3EP	21.1	3200	180	195	210
ALP2D34T3EP	23.7	3000	180	195	210
ALP2D37T3EP	25.5	2800	170	185	200
ALP2D40T3EP	28.2	2500	170	185	200
ALP2D50T3EP	35.2	2500	140	155	170

SPARE PARTS

MODEL	DESCRIPTION
601619	Relief Valve in Rear Cover Relieving to Suction
650226	Seal Kit
524228	Shaft Seal Only



PUMPS

Gear Pump (Aluminium)

- > SHAFT: C1 = 5/8" Parallel Keyed 135 Nm
S1 = 5/8" 9 Spline 185Nm
- > SPIGOT: 3 1/4"
- > MOUNT: SAE A 2 Bolt
- > PORTS: UNO 6 - 40 Suction 1 1/16" Pressure 7/8"
50 Suction 1 1/16" Pressure 1 1/16"
- > D = CW Rotation
- > S = CCW Rotation



GROUP 2 SAE

MODEL	CC/REV	MAX RPM	MAX PRESSURE BAR		
			Continuous	Intermittent	Peak
ALP2AD6S1	4.5	4000	250	270	290
ALP2AD9S1	6.4	4000	250	270	290
ALP2AD10S1	7.0	4000	250	270	290
ALP2AD12S1	8.3	4000	250	270	290
ALP2AD13S1	9.6	4000	250	270	290
ALP2AD16S1	11.5	4000	230	250	270
ALP2AD20S1	14.1	3200	230	250	270
ALP2AD22S1	16.0	2800	210	225	240
ALP2AD25S1	17.9	2500	210	225	240
ALP2AD30S1	21.1	2200	180	195	210
ALP2AD34S1	23.7	2000	180	195	210
ALP2AD37S1	25.5	1800	170	185	200
ALP2AD40S1	28.2	1800	170	185	200
ALP2AD50S1	35.2	2000	140	155	170

SPARE PARTS

MODEL	DESCRIPTION
601619	Relief Valve in Rear Cover Relieving to Suction
650226	Seal Kit
524228	Shaft Seal Only



PUMPS

Gear Pump (Aluminium)

> SHAFT:	1.8 taper 250 Nm
> SPIGOT:	50.8mm
> MOUNT:	Euro 4 Bolt 128 x 98.5mm
> PORTS:	PCD Port Sizes
	30 - 80
	66
	94 - 135
	56 x 56
	51 x 51
	62 x 51



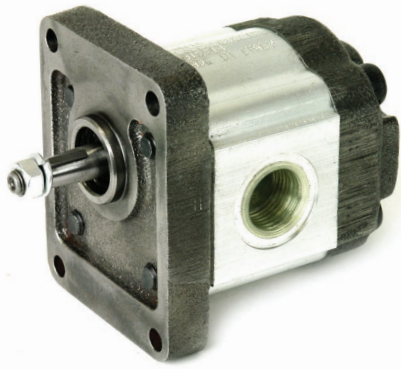
- > D = CW Rotation
- > S = CCW Rotation

GROUP 3 EURO

MODEL	CC/REV	MAX RPM	MAX PRESSURE BAR		
			Continuous	Intermittent	Peak
ALP3D30	20	3500	230	250	270
ALP3D33	22	3500	230	250	270
ALP3D40	26	3000	230	250	270
ALP3D50	33	3000	230	250	270
ALP3D60	39	3000	230	250	270
ALP3D66	44	2800	210	230	250
ALP3D80	52	2400	200	215	230
ALP3D94	61	2800	190	205	220
ALP3D110	71	2500	170	185	200
ALP3D120	78	2300	160	175	190
ALP3D135	87	2000	140	155	170

SPARE PARTS

MODEL	DESCRIPTION
650231	Seal Kit
524229	Shaft Seal Only



PUMPS

Gear Pump (Aluminium)

- > SHAFT: 1.8 Taper
- > SPIGOT: 25.4mm
- > MOUNT: Euro 4 Bolt 71.9 x 52.4mm
- > PORTS: ½" x ⅜" BSPP



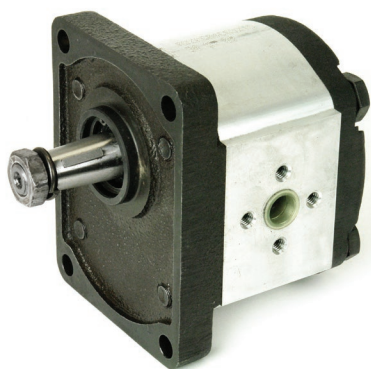
- > Alloy Body with Cast Iron Ends
- > D = CW Rotation
- > S = CCW Rotation

GROUP 1 EURO

MODEL	CC/REV	MAX RPM	MAX PRESSURE BAR	
			Continuous	Peak
<u>01ZAG11C400TD</u>	1.1	6000	210	250
<u>01ZAG21C400TD</u>	2.1	6000	210	250
<u>01ZAG32C400TD</u>	3.2	4500	210	250
<u>01ZAG37C400TD</u>	3.7	4000	210	250
<u>01ZAG42C400TD</u>	4.2	3800	190	230
<u>01ZAG55C400TD</u>	5.5	3500	160	200
<u>01ZAG62C400TD</u>	6.2	3000	140	180
<u>01ZAG78C400TD</u>	7.8	3000	120	160

SPARE PARTS

MODEL	DESCRIPTION
<u>K1000010</u>	Seal Kit



PUMPS

Gear Pump (Aluminium)

- > SHAFT: 1.8 taper
- > SPIGOT: 36.5mm
- > MOUNT: Euro 4 Bolt 96 x 71.55mm
- > PORTS: PCD Port Sizes 4 - 8cc 30 x 30
 11 - 31cc 40 x 30
- > BSPP Ports Available
- > Alloy Body with Cast Iron Ends
- > D = CW Rotation
- > S = CCW Rotation

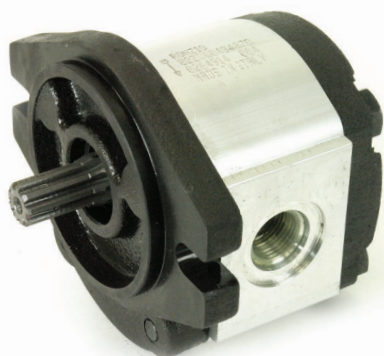


GROUP 2 EURO

MODEL	CC/REV	MAX RPM	MAX PRESSURE BAR	
			Continuous	Peak
<u>02ZAG04C032TD</u>	4.4	4500	300	360
<u>02ZAG06C032TD</u>	6.28	4500	300	360
<u>02ZAG08C032TD</u>	8.16	3700	300	360
<u>02ZAG11C033TD</u>	11.3	3300	300	360
<u>02ZAG14C033TD</u>	14.45	2700	300	360
<u>02ZAG17C033TD</u>	16.95	2500	270	330
<u>02ZAG20C033TD</u>	20.1	2500	230	290
<u>02ZAG25C033TD</u>	25.75	2500	180	230
<u>02ZAG31C033TD</u>	31.4	2200	160	200

SPARE PARTS

MODEL	DESCRIPTION
<u>02Z-S</u>	Seal Kit
<u>02Z-S-V</u>	Seal Kit Viton
<u>MIM30197</u>	Shaft Seal for 11T ¾" & 10T 17mm Shafts



PUMPS

Gear Pump (Aluminium)



- > SHAFT: $\frac{5}{8}$ " Keyed, $\frac{5}{8}$ " 9T Spline, 11T, 10T
- > SPIGOT: 3 $\frac{1}{4}$ "
- > MOUNT: 2 Bolt SAE A
- > PORTS: UNO Port Sizes 4 - 11 $\frac{7}{8}$ " x $\frac{7}{8}$ " UNO
 14 - 31 1 $\frac{1}{16}$ " x $\frac{7}{8}$ " UNO

- > Alloy Body with Cast Iron Ends
- > D = CW Rotation
- > S = CCW Rotation

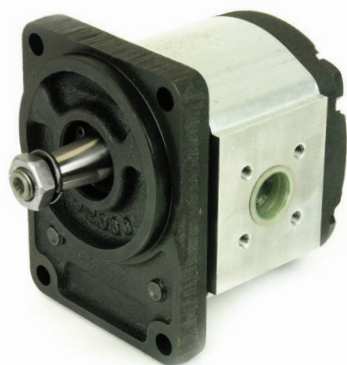
GROUP 2 SAE

MODEL	CC/REV	MAX RPM	MAX PRESSURE BAR	
			Continuous	Peak
<u>02ZCG04L437D</u>	4.4	4500	300	360
<u>02ZCG06L437D</u>	6.28	4500	300	360
<u>02ZCG08L437D</u>	8.16	3700	300	360
<u>02ZCG11L437D</u>	11.3	3300	300	360
<u>02ZCG14L438D</u>	14.45	2700	300	360
<u>02ZCG17L438D</u>	16.95	2500	270	330
<u>02ZCG20L438D</u>	20.1	2500	230	290
<u>02ZCG25L438D</u>	25.75	2500	180	230
<u>02ZCG31L438D</u>	31.4	2200	160	200

> MODEL CODES REFER TO KEYED SHAFTS

SPARE PARTS

MODEL	DESCRIPTION
<u>02Z-S</u>	Seal Kit
<u>02Z-S-V</u>	Seal Kit Viton
<u>MIM30197</u>	Shaft Seal for 11T $\frac{3}{4}$ " & 10T 17mm Shafts



PUMPS

Gear Pump (Aluminium)



- > SHAFT: 1.5 Taper or 9T DIN Spline (16.5mm)
- > SPIGOT: 80mm
- > MOUNT: 4 Bolt German 100 x 72mm
- > PORTS: PCD 40 x 35

> Alloy Body with Cast Iron Ends

> D = CW Rotation

> S = CCW Rotation

GROUP 2

4 BOLT GERMAN PCD

MODEL	CC/REV	MAX RPM	MAX PRESSURE BAR	
			Continuous	Peak
02ZBG04A136TD	4.4	4500	300	360
02ZBG06A136TD	6.28	4500	300	360
02ZBG08A136TD	8.16	3700	300	360
02ZBG11A136TD	11.3	3300	300	360
02ZBG14A136TD	14.45	2700	300	360
02ZBG17A136TD	16.95	2500	270	330
02ZBG20A136TD	20.1	2500	230	290
02ZBG25A136TD	25.75	2500	180	230
02ZBG31A136TD	31.4	2200	160	200

> MODEL CODES REFER TO 1:5 TAPER

SPARE PARTS

MODEL	DESCRIPTION
02Z-S	Seal Kit
02Z-S-V	Seal Kit Viton
MIM30197	Shaft Seal for 11T 3/4" & 10T 17mm Shafts



PUMPS

Gear Pump (Aluminium)



- > SHAFT: 1.5 Taper or 9T DIN Spline (16.5mm)
- > SPIGOT: 50mm
- > MOUNT: 2 Bolt German 60 x 60
- > MOUNTING HOLES: 5 o'clock / 11 o'clock
- > PORTS: PCD 40 x 35

> Alloy Body with Cast Iron Ends

> D = CW Rotation

> S = CCW Rotation

GROUP 2

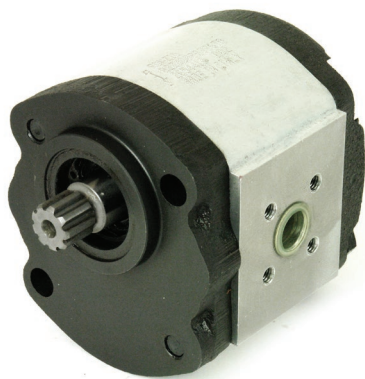
2 BOLT GERMAN D3 PCD

MODEL	CC/REV	MAX RPM	MAX PRESSURE BAR	
			Continuous	Peak
02ZDG04A336TD	4.4	4500	300	360
02ZDG06A336TD	6.28	4500	300	360
02ZDG08A336TD	8.16	3700	300	360
02ZDG11A336TD	11.3	3300	300	360
02ZDG14A336TD	14.45	2700	300	360
02ZDG17A336TD	16.95	2500	270	330
02ZDG20A336TD	20.1	2500	230	290
02ZDG25A336TD	25.75	2500	180	230
02ZDG31A336TD	31.4	2200	160	200

> MODEL CODES REFER TO 1:5 TAPER

SPARE PARTS

MODEL	DESCRIPTION
02Z-S	Seal Kit
02Z-S-V	Seal Kit Viton
MIM30197	Shaft Seal for 11T 3/4" & 10T 17mm Shafts



PUMPS

Gear Pump (Aluminium)

- > SHAFT: 1.5 taper or 9T DIN Spline (16.5mm)
- > SPIGOT: 50mm
- > MOUNT: 2 Bolt German 60 x 60
- > MOUNTING HOLES: 1 o'clock / 7 o'clock
- > PORTS: PCD 40 x 35



- > Alloy Body with Cast Iron Ends
- > D = CW Rotation
- > S = CCW Rotation

GROUP 2

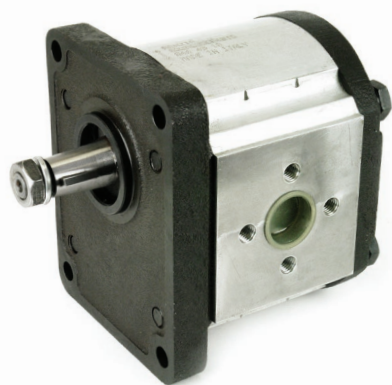
2 BOLT GERMAN M3 PCD

MODEL	CC/REV	MAX RPM	MAX PRESSURE BAR	
			Continuous	Peak
<u>02ZMG04A336TD</u>	4.4	4500	300	360
<u>02ZMG06A336TD</u>	6.28	4500	300	360
<u>02ZMG08A336TD</u>	8.16	3700	300	360
<u>02ZMG11A336TD</u>	11.3	3300	300	360
<u>02ZMG14A336TD</u>	14.45	2700	300	360
<u>02ZMG17A336TD</u>	16.95	2500	270	330
<u>02ZMG20A336TD</u>	20.1	2500	230	290
<u>02ZMG25A336TD</u>	25.75	2500	180	230
<u>02ZMG31A336TD</u>	31.4	2200	160	200

> MODEL CODES REFER TO 1:5 TAPER

SPARE PARTS

MODEL	DESCRIPTION
<u>02Z-S</u>	Seal Kit
<u>02Z-S-V</u>	Seal Kit Viton
<u>MIM30197</u>	Shaft Seal for 11T 3/4" & 10T 17mm Shafts



PUMPS

Gear Pump (Aluminium)



> SHAFT:	1.8 Taper		
> SPIGOT:	50.8mm		
> MOUNT:	128 x 98mm		
> PORTS:	PCD Port Sizes	20 - 55	51 x 40
		60	62 x 51

> Alloy Body with Cast Iron Ends

> D = CW Rotation

> S = CCW Rotation

GROUP 3 EURO

MODEL	CC/REV	MAX RPM	MAX PRESSURE BAR	
			Continuous	Peak
03ZAG20C048TD	20	3000	280	310
03ZAG25C048TD	25	3000	280	310
03ZAG30C048TD	30	3000	280	310
03ZAG35C048TD	35	3000	280	310
03ZAG40C048TD	40	2700	250	280
03ZAG45C048TD	45	2700	250	280
03ZAG55C048TD	55	2200	230	250
03ZAG60C047TD	60	2000	200	220

SPARE PARTS

MODEL	DESCRIPTION
03Z-S	Seal Kit
03Z-S-V	Seal Kit Viton



PUMPS

Gear Pump (Aluminium)



- > SHAFT: $\frac{7}{8}$ " x 13T Spline or $\frac{7}{8}$ " Straight Keyed
- > SPIGOT: 4"
- > MOUNT: 2 Bolt SAE B
2 Bolt SAE A Available on Request
- > PORTS: PCD 51 x 40

- > Alloy Body with Cast Iron Ends
- > D = CW Rotation
- > S = CCW Rotation

GROUP 3 SAE

MODEL	CC/REV	MAX RPM	MAX PRESSURE BAR	
			Continuous	Peak
03ZBG20B348TD	20	3000	280	310
03ZBG25B348TD	25	3000	280	310
03ZBG30B348TD	30	3000	280	310
03ZBG35B348TD	35	3000	280	310
03ZBG40B348TD	40	2700	250	280
03ZBG45B348TD	45	2700	250	280
03ZBG55B348TD	55	2200	230	250
03ZBG60B348TD	60	2000	200	220

> MODEL CODES REFER TO SPLINE SHAFTS

SPARE PARTS

MODEL	DESCRIPTION
03Z-S	Seal Kit
03Z-S-V	Seal Kit Viton



PUMPS

Gear Pump (Aluminium)



- > SHAFT: 10T x 17mm
- > SPIGOT: 3 ¼"
- > MOUNT: SAE A 2 Bolt
- > PORTS: UNO

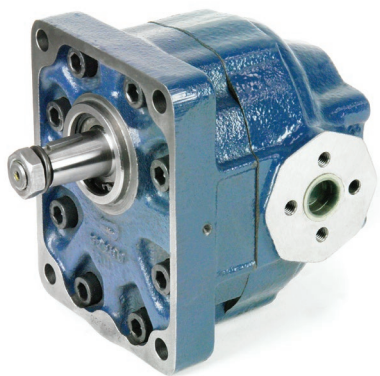
- > Similar to KYB and Shimadzu Pumps
- > Side and Rear Port Available in UNO
- > SAE Flange Port Available 16-33 cc/rev

GROUP 2 SAE

MODEL	CC/REV	MAX RPM	MAX PRESSURE BAR Continuous
SP20B11	11	4000	210
SP20B14	14	4000	210
SP20B16	16	4000	210
SP20B20	20	3500	172
SP20B23	23	3500	172
SP20B27	27	3500	172
SP20B30	30	3500	172
SP20B33	33	3500	172

SPARE PARTS

MODEL	DESCRIPTION
PMCK-SP20	Seal Kit
SP20BSS	Shaft Seal Only



PUMPS

Gear Pump (Cast Iron)

> SHAFT:	1.8 Taper		
> SPIGOT:	50.8mm		
> MOUNT:	128 x 98mm		
> PORTS:	PCD Port Sizes	20 - 55	51 x 40
		64	62 x 51



- > Full Cast Iron
- > D = CW Rotation
- > S = CCW Rotation

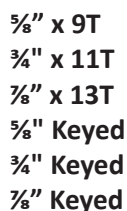
GROUP 3 EURO

MODEL	CC/REV	MAX RPM	MAX PRESSURE BAR	
			Continuous	Peak
030W002500D	25	3500	300	350
030W003500D	35	3000	280	330
030W004500D	45	2800	250	300
030W005500D	55	2500	230	270
030W006400D	64	2500	200	240

SPARE PARTS

MODEL	DESCRIPTION
-------	-------------

030W-S	Seal Kit
--------	----------



2 Bolt SAE A
2 Bolt SAE B

MAX RPM

SPARE PARTS

P124-S **Seal Kit**



PUMPS

Gear Pump (Cast Iron)



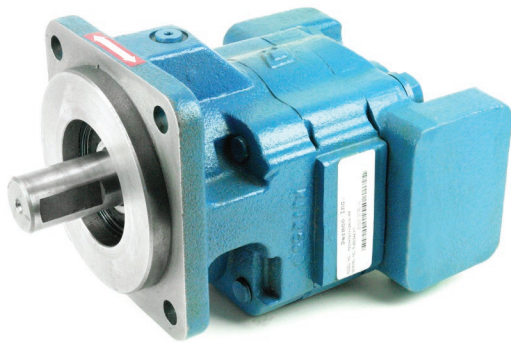
- > STANDARD SHAFTS:
 - 1" Keyed
 - $\frac{7}{8}$ " x 13T
 - 1" x 15T
- > STANDARD MOUNTS:
 - 2 Bolt SAE A
 - 2 Bolt SAE B
 - 4 Bolt SAE B
 - 4 Bolt SAE C
- > 'C' SHAFTS:
 - $\frac{7}{8}$ " Keyed
 - 1 $\frac{1}{4}$ " Keyed
 - 1 $\frac{1}{4}$ " x 14T

P197 BUSH

CC/REV	MAX PRESSURE BAR Continuous	GEAR WIDTH	MAX RPM
16.5	240	$\frac{1}{2}$ "	3000
24.3	240	$\frac{3}{4}$ "	3000
32.3	240	1"	3000
40.4	240	1 $\frac{1}{4}$ "	3000
48.4	240	1 $\frac{1}{2}$ "	3000
56.5	220	1 $\frac{3}{4}$ "	3000
64.4	200	2"	3000

SPARE PARTS

MODEL	DESCRIPTION
P197-S	Seal Kit



PUMPS

Gear Pump (Cast Iron)



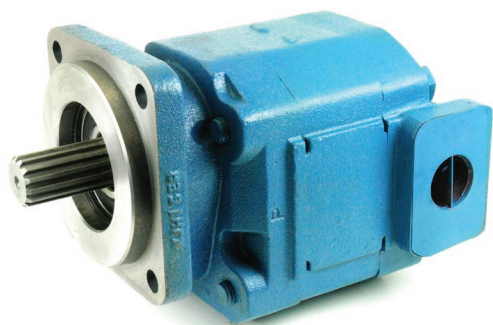
- > STANDARD SHAFTS:
 - 1 ¼" Keyed
 - 1 ¼" 14T
 - ⅞" 13T
- > STANDARD MOUNTS:
 - 2 Bolt SAE B
 - 2 Bolt SAE C
 - 4 Bolt SAE B
 - 4 Bolt SAE C
- > 'C' SHAFTS:
 - 1" 15T

P257 BUSH

CC/REV	MAX PRESSURE BAR Continuous	GEAR WIDTH	MAX RPM
31.3	240	¾"	2400
41.8	240	1"	2400
52.2	240	1 ¼"	2400
62.7	240	1 ½"	2400
73.1	220	1 ¾"	2400
83.6	200	2"	2400
94.0	190	2 ¼"	2400
104.5	170	2 ½"	2400

SPARE PARTS

MODEL	DESCRIPTION
<u>P257-S</u>	Seal Kit



PUMPS

Gear Pump (Cast Iron)



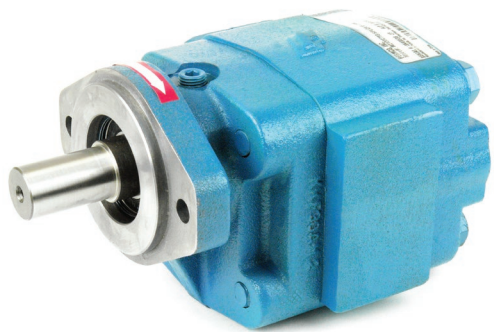
- > STANDARD SHAFTS: 1 1/4" Keyed
1 1/4" 14T
- > STANDARD MOUNTS: 2 Bolt SAE B
2 Bolt SAE C
4 Bolt SAE B
4 Bolt SAE C
4 Bolt SAE D
- > 'C' SHAFTS: 1 1/2" 17T

P360 BUSH

CC/REV	MAX PRESSURE BAR Continuous	GEAR WIDTH	MAX RPM
44.3	240	3/4"	2400
59.0	240	1"	2400
73.8	240	1 1/4"	2400
88.5	240	1 1/2"	2400
103.5	240	1 3/4"	2400
118.0	240	2"	2400
132.8	220	2 1/4"	2400
147.5	200	2 1/2"	2400

SPARE PARTS

MODEL	DESCRIPTION
P360-S	Seal Kit



PUMPS

Gear Pump (Cast Iron)



- > STANDARD SHAFTS:
- $\frac{7}{8}$ " 13T
 - 1" Keyed
 - $\frac{7}{8}$ " Keyed
- > STANDARD MOUNTS:
- 2 Bolt SAE A
 - 2 Bolt SAE B
 - 2 Bolt SAE B-Short
 - 4 Bolt SAE B
 - 6 Bolt Round
 - Chelsea Clover

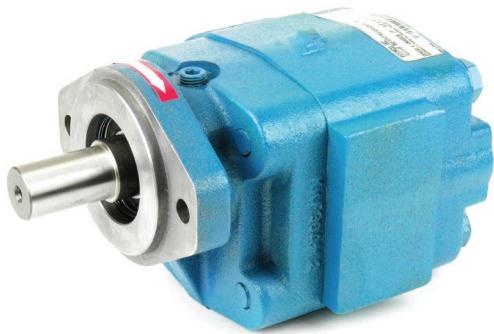
> Contact Us for the Full Range of 'C' Shaft Options

P2100 ROLLER BEARING

CC/REV	MAX PRESSURE BAR Continuous	GEAR WIDTH	MAX RPM
16.1	205	$\frac{1}{2}$ "	2400
24.2	205	$\frac{3}{4}$ "	2400
32.2	205	1"	2400
40.4	205	1 $\frac{1}{4}$ "	2400
48.4	205	1 $\frac{1}{2}$ "	2400
56.5	170	1 $\frac{3}{4}$ "	2400
64.6	170	2"	2400

SPARE PARTS

MODEL	DESCRIPTION
P2100-S	Seal Kit
P2100-S-C	Seal Kit - 'C' Shaft



PUMPS

Gear Pump (Cast Iron)



- > STANDARD SHAFTS:
- $\frac{7}{8}$ " Keyed
 - 1" Keyed
 - $\frac{5}{8}$ " 9T
 - $\frac{7}{8}$ " 13T
- > STANDARD MOUNTS:
- 2 Bolt SAE A
 - 2 Bolt SAE B
 - 4 Bolt SAE B
 - 4 Bolt SAE C
 - 6 Bolt Round

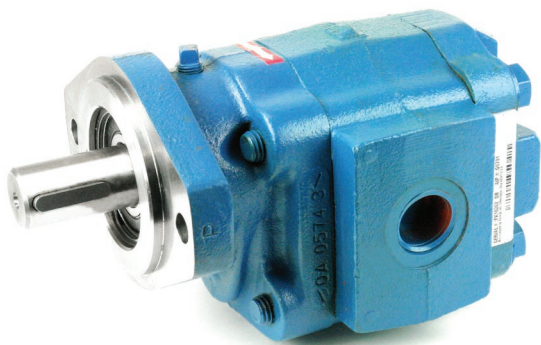
> Contact Us for the Full Range of 'C' Shaft Options

P3100 ROLLER BEARING

CC/REV	MAX PRESSURE BAR Continuous	GEAR WIDTH	MAX RPM
16.2	205	$\frac{1}{2}$ "	2400
24.2	205	$\frac{3}{4}$ "	2400
32.3	205	1"	2400
40.4	205	1 $\frac{1}{4}$ "	2400
48.4	205	1 $\frac{1}{2}$ "	2400
56.5	170	1 $\frac{3}{4}$ "	2400
64.6	170	2"	2400

SPARE PARTS

MODEL	DESCRIPTION
<u>P3000-S</u>	Seal Kit
<u>P3000-S-C</u>	Seal Kit - 'C' Shaft



PUMPS

Gear Pump (Cast Iron)



- > STANDARD SHAFTS:
 - 1 1/4" Keyed
 - 7/8" 13T
 - 1 1/4" 14T
- > STANDARD MOUNTS:
 - 2 Bolt SAE B
 - 2 Bolt SAE C
 - 4 Bolt SAE B
 - 4 Bolt SAE C
 - 6 Bolt Round
- > 'C' SHAFTS:
 - 1" Keyed
 - 1 1/8" Keyed
 - 1" 6T
 - 1" 15T

P5100 ROLLER BEARING

CC/REV	MAX PRESSURE BAR Continuous	GEAR WIDTH	MAX RPM
20.9	205	1/2"	2400
31.3	205	3/4"	2400
41.8	205	1"	2400
52.2	205	1 1/4"	2400
62.7	205	1 1/2"	2400
73.1	170	1 3/4"	2400
83.6	170	2"	2400
94.0	153	2 1/4"	2400
104.5	153	2 1/2"	2400

SPARE PARTS

MODEL	DESCRIPTION
P5000-S	Seal Kit

PUMPS

Gear Pump (Cast Iron)



- > STANDARD SHAFTS:
 - 1 1/4" 14T
 - 1 1/4" Keyed
- > STANDARD MOUNTS:
 - 2 Bolt SAE C
 - 4 Bolt SAE B
 - 4 Bolt SAE C
 - 4 Bolt SAE D
- > 'C' SHAFTS:
 - 1 1/4" Keyed
 - 1 3/4" 13T
 - KOMATSU 19T

P7600 ROLLER BEARING

CC/REV	MAX PRESSURE BAR Continuous	GEAR WIDTH	MAX RPM
50.4	205	3/4"	2400
67.2	205	1"	2400
84.0	205	1 1/4"	2400
100.8	205	1 1/2"	2400
117.6	205	1 3/4"	2400
134.4	205	2"	2400
151.2	170	2 1/4"	2400
167.8	170	2 1/2"	2400
184.8	153	2 3/4"	2400
201.6	153	3"	2400

SPARE PARTS

MODEL	DESCRIPTION
-------	-------------

P7500-S	Seal Kit
---------	----------

PUMPS

Gear Pump (Cast Iron)

- > STANDARD SHAFTS: $\frac{3}{8}$ " x 13T
1 $\frac{1}{4}$ " x 14T
1 $\frac{1}{4}$ " Straight Keyed
- > STANDARD MOUNTS: 4 Bolt SAE C
- > Contact Us for the Range of Parts Available



P2500 (25X) ROLLER BEARING

CC/REV	MAX PRESSURE BAR Continuous	GEAR WIDTH	MAX RPM
36.0	138	1"	2400
47.0	138	1 $\frac{1}{4}$ "	2400
56.7	138	1 $\frac{1}{2}$ "	2400
67.8	138	1 $\frac{3}{4}$ "	2400
75.7	138	2"	2400
83.6	138	2 $\frac{1}{4}$ "	2400
91.4	138	2 $\frac{1}{2}$ "	2400

SPARE PARTS

MODEL	DESCRIPTION
W62-26-13	Shaft Seal

PUMPS

Gear Pump (Cast Iron)

- > STANDARD SHAFTS: 1 ¼" x 14T
1 ¼" Straight Keyed
- > STANDARD MOUNTS: 4 Bolt SAE C



> Contact Us for the Range of Parts Available

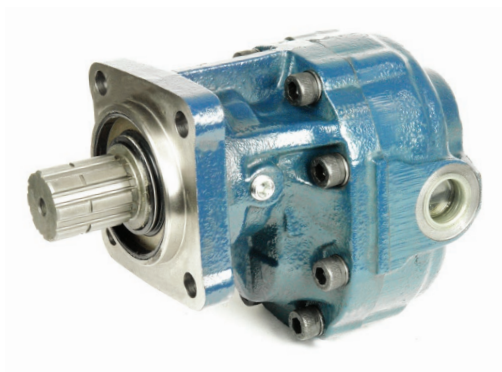
P3700 (37X) ROLLER BEARING

CC/REV	MAX PRESSURE BAR Continuous	GEAR WIDTH	MAX RPM
44.0	155	1"	2400
53.6	155	1 ¼"	2400
66.0	155	1 ½"	2400
78.8	155	1 ¾"	2400
91.4	155	2"	2400
104.0	155	2 ¼"	2400
116.7	155	2 ½"	2400

SPARE PARTS

MODEL	DESCRIPTION
-------	-------------

<u>W62-34-10</u>	Viton Shaft Seal
------------------	------------------



PUMPS

Gear Pump (PTO)

> SHAFT: 35mm x 8T
 > SPIGOT: 80mm
 > MOUNT: 4 Bolt 80 x 80
 > PORTS: BSPP



> D = CW Rotation
 > S = CCW Rotation

ISO

MODEL	CC/REV	MAX RPM	MAX PRESSURE BAR	
			Continuous	Peak
<u>032NF025E0S</u>	25	3000	300	350
<u>032NF035E0S</u>	35	2500	280	330
<u>032NF045E0S</u>	45	2200	250	300
<u>032NF055E0S</u>	55	2000	230	270
<u>032NF064E0S</u>	64	2000	200	240
<u>032NF080E0S</u>	80	1800	170	210
<u>042NF075E0S</u>	75	1800	270	320
<u>042NF090E0S</u>	90	1800	250	300
<u>042NF110E0S</u>	110	1500	240	280
<u>042NF130E0S</u>	130	1500	220	260
<u>042NF150E0S</u>	150	1500	180	220

SPARE PARTS

MODEL	DESCRIPTION	SIZE
<u>ISONF58-SK</u>	Seal Kit	032NF
<u>ISONF76-SK</u>	Seal Kit	042NF



PUMPS

Gear Pump (PTO)

- > SHAFT: 6T
- > SPIGOT: 52mm
- > MOUNT: 3 Bolt
- > PORTS: BSPP

- > D = CW Rotation
- > S = CCW Rotation



UNI

MODEL	CC/REV	MAX RPM	MAX PRESSURE BAR	
			Continuous	Peak
<u>032NF02500S</u>	25	3000	300	350
<u>032NF03500S</u>	35	2500	280	330
<u>032NF04500S</u>	45	2200	250	300
<u>032NF05500S</u>	55	2000	230	270
<u>032NF06400S</u>	64	2000	200	240
<u>032NF08000S</u>	80	1800	170	210
<u>042NF07500S</u>	75	1800	270	320
<u>042NF09000S</u>	90	1800	250	300
<u>042NF11000S</u>	110	1500	240	280
<u>042NF13000S</u>	130	1500	220	260
<u>042NF15000S</u>	150	1500	180	220

SPARE PARTS

MODEL	DESCRIPTION	SIZE
<u>UNINF58-SK</u>	Seal Kit	032NF
<u>UNINF76-SK</u>	Seal Kit	042NF



PUMPS

Multiple Gear Pump Modules (Aluminium)

- > SHAFT: 1.8 Taper 100 Nm 3mm Key
- > SPIGOT: 30mm
- > MOUNT: EURO 4 Bolt 73mm x 56mm
- > PORTS: PCD 30 x 30



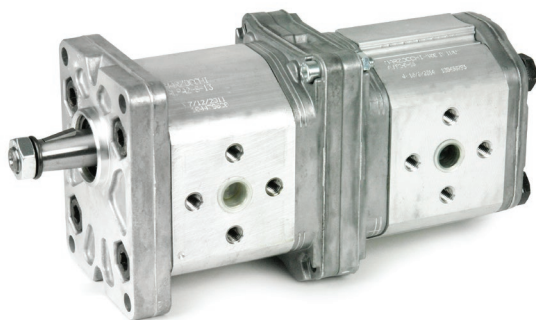
- > D = CW Rotation
- > S = CCW Rotation

GROUP 1.5 EURO

FRONT	MIDDLE	REAR	CC/REV	MAX RPM	MAX PRESSURE BAR		
					Continuous	Intermittent	Peak
ALPA1D2	ALPI12	ALPP1D2	1.4	6000	290	310	290
ALPA1D3	ALPI13	ALPP1D3	2.1	6000	290	310	290
ALPA1D4	ALPI14	ALPP1D4	2.8	5000	290	310	290
ALPA1D5	ALPI15	ALPP1D5	3.5	5000	270	290	290
ALPA1D6	ALPI16	ALPP1D6	4.1	4000	270	290	290
ALPA1D7	ALPI17	ALPP1D7	5.2	4000	260	280	290
ALPA1D9	ALPI19	ALPP1D9	6.2	3800	260	280	290

SPARE PARTS

MODEL	DESCRIPTION
650164	Joining Kit
650311	Seal Kit
524214	Shaft Seal Only



PUMPS

Multiple Gear Pump Modules (Aluminium)

- > SHAFT EURO: 1.8 Taper 150 Nm 4mm Key
- > MOUNT EURO: 4 Bolt 96mm x 71.55mm
- > PORTS: PCD Port Sizes 6 and 9 30 x 30
All Other Sizes 40 x 40



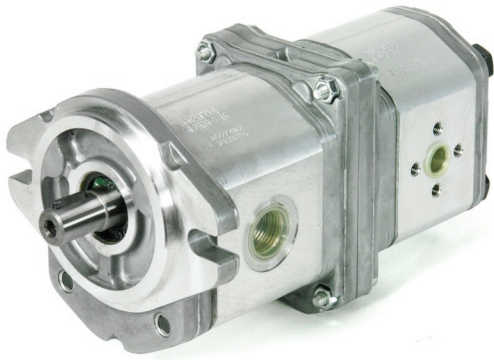
- > D = CW Rotation
- > S = CCW Rotation

GROUP 2 EURO

FRONT	MIDDLE	REAR	CC/REV	MAX RPM	MAX PRESSURE BAR		
					Continuous	Intermittent	Peak
<u>ALPA2D6</u>	<u>ALPI26</u>	<u>ALPP2D6</u>	4.5	4000	250	270	290
<u>ALPA2D9</u>	<u>ALPI29</u>	<u>ALPP2D9</u>	6.4	4000	250	270	290
<u>ALPA2D10</u>	<u>ALPI210</u>	<u>ALPP2D10</u>	7.0	4000	250	270	290
<u>ALPA2D12</u>	<u>ALPI212</u>	<u>ALPP2D12</u>	8.3	3500	250	270	290
<u>ALPA2D13</u>	<u>ALPI213</u>	<u>ALPP2D13</u>	9.6	3000	250	270	290
<u>ALPA2D16</u>	<u>ALPI216</u>	<u>ALPP2D16</u>	11.5	4000	230	250	270
<u>ALPA2D20</u>	<u>ALPI220</u>	<u>ALPP2D20</u>	14.1	4000	230	250	270
<u>ALPA2D22</u>	<u>ALPI222</u>	<u>ALPP2D22</u>	16.0	4000	210	225	240
<u>ALPA2D25</u>	<u>ALPI225</u>	<u>ALPP2D25</u>	17.9	3600	210	225	240
<u>ALPA2D30</u>	<u>ALPI230</u>	<u>ALPP2D30</u>	21.1	3200	180	195	210
<u>ALPA2D34</u>	<u>ALPI234</u>	<u>ALPP2D34</u>	23.7	3000	180	195	210
<u>ALPA2D37</u>	<u>ALPI237</u>	<u>ALPP2D37</u>	25.5	2800	170	170	200
<u>ALPA2D40</u>	<u>ALPI240</u>	<u>ALPP2D40</u>	28.2	2500	170	170	200

SPARE PARTS

MODEL	DESCRIPTION
<u>650168</u>	Joining Kit 2 + 2
<u>650167</u>	Joining Kit 2 + 1
<u>650314</u>	Seal Kit
<u>524228</u>	Shaft Seal Only



PUMPS

Multiple Gear Pump Modules (Aluminium)

- > SHAFT SAE: C1 = 5/8" Parallel Keyed 135 Nm
S1 = 5/8" 9 Spline 135 Nm
- > MOUNT SAE: 2 Bolt A
- > PORTS: PCD Port Sizes 6 and 9 30 x 30
All Other Sizes 40 x 40



- > D = CW Rotation
- > S = CCW Rotation

GROUP 2 SAE

FRONT	MIDDLE	REAR	CC/REV	MAX RPM	MAX PRESSURE BAR		
					Continuous	Intermittent	Peak
ALPA2AD6	ALPI26	ALPP2D6	4.5	4000	250	270	290
ALPA2AD9	ALPI29	ALPP2D9	6.4	4000	250	270	290
ALPA2AD10	ALPI210	ALPP2D10	7.0	4000	250	270	290
ALPA2AD12	ALPI212	ALPP2D12	8.3	3500	250	270	290
ALPA2AD13	ALPI213	ALPP2D13	9.6	3000	250	270	290
ALPA2AD16	ALPI216	ALPP2D16	11.5	4000	230	250	270
ALPA2AD20	ALPI220	ALPP2D20	14.1	4000	230	250	270
ALPA2AD22	ALPI222	ALPP2D22	16.0	4000	210	225	240
ALPA2AD25	ALPI225	ALPP2D25	17.9	3600	210	225	240
ALPA2AD30	ALPI230	ALPP2D30	21.1	3200	180	195	210
ALPA2AD34	ALPI234	ALPP2D34	23.7	3000	180	195	210
ALPA2AD37	ALPI237	ALPP2D37	25.5	2800	170	170	200
ALPA2AD40	ALPI240	ALPP2D40	28.2	2500	170	170	200

SPARE PARTS

MODEL	DESCRIPTION
650168	Joining Kit 2 + 2
650167	Joining Kit 2 + 1
650314	Seal Kit
524228	Shaft Seal only



PUMPS

Multiple Gear Pump Modules (Aluminium)

> SHAFT:	1.8 Taper 250 Nm 4mm Key		
> MOUNT:	Euro 4 Bolt 128mm x 98.5mm		
> PORTS:	PCD Port Sizes	30 - 60	56 x 56
		66	51 x 51
		80	56 x 56
		94 - 135	51 x 62



> D = CW Rotation
> S = CCW Rotation

GROUP 3 EURO

FRONT	MIDDLE	REAR	CC/REV	MAX RPM	MAX PRESSURE BAR		
					Continuous	Intermittent	Peak
<u>ALPA3D30</u>	<u>ALPI330</u>	<u>ALPP3D30</u>	20	3500	230	250	270
<u>ALPA3D33</u>	<u>ALPI333</u>	<u>ALPP3D33</u>	22	3500	230	250	270
<u>ALPA3D40</u>	<u>ALPI340</u>	<u>ALPP3D40</u>	26	3300	230	250	270
<u>ALPA3D50</u>	<u>ALPI350</u>	<u>ALPP3D50</u>	33	3300	230	250	270
<u>ALPA3D60</u>	<u>ALPI360</u>	<u>ALPP3D60</u>	39	3000	220	240	260
<u>ALPA3D66</u>	<u>ALPI366</u>	<u>ALPP3D66</u>	44	2800	210	230	250
<u>ALPA3D80</u>	<u>ALPI380</u>	<u>ALPP3D80</u>	52	2500	200	215	230
<u>ALPA3D94</u>	<u>ALPI394</u>	<u>ALPP3D94</u>	61	2800	190	205	220
<u>ALPA3D110</u>			71	2500	170	185	200
<u>ALPA3D120</u>			78	2300	160	175	190
<u>ALPA3D135</u>			87	2000	140	155	170

SPARE PARTS

MODEL	DESCRIPTION
<u>650169</u>	Joining Kit 3 + 1
<u>650170</u>	Joining Kit 3 + 2
<u>650171</u>	Joining Kit 3 + 3
<u>650315</u>	Seal Kit Euro Front
<u>650316</u>	Seal Kit Middle and Rear Section



PUMPS

Multiple Gear Pump Modules (Aluminium)



> SHAFT: 1.8 Taper
 > SPIGOT: 25.4mm
 > MOUNT: Euro 4 Bolt 71.9 x 52.4mm
 > PORTS: ½" x ⅜" BSPP

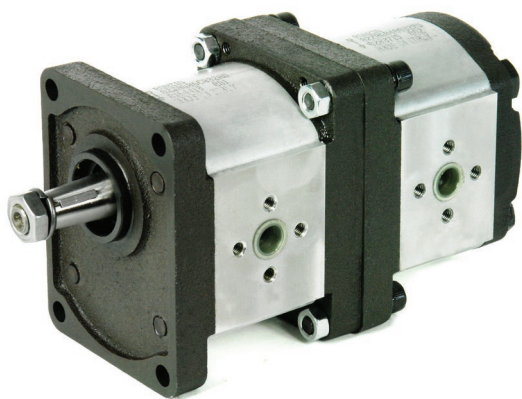
> Alloy Body with Cast Iron Ends
 > D = CW Rotation
 > S = CCW Rotation

GROUP 1 EURO

FRONT	MIDDLE	REAR	CC/REV	MAX RPM	MAX PRESSURE BAR	
					Continuous	Peak
01ZAG11C400AD	01ZAG110000ID	01ZAG110000PD	1.1	6000	210	250
01ZAG21C400AD	01ZAG210000ID	01ZAG210000PD	2.1	6000	210	250
01ZAG32C400AD	01ZAG320000ID	01ZAG320000PD	3.2	4500	210	250
01ZAG37C400AD	01ZAG370000ID	01ZAG370000PD	3.7	4000	210	250
01ZAG42C400AD	01ZAG420000ID	01ZAG420000PD	4.2	3800	190	230
01ZAG55C400AD	01ZAG550000ID	01ZAG550000PD	5.5	3500	160	200
01ZAG78C400AD	01ZAG780000ID	01ZAG780000PD	7.8	3000	120	160

SPARE PARTS

MODEL	DESCRIPTION
K1000010	Seal Kit - Front Pump
K1000009	Seal Kit - Intermediate & Rear
K1000000	Joining Kit



PUMPS

Multiple Gear Pump Modules (Aluminium)



- > SPIGOT: 36.5mm
- > MOUNT: Euro 4 Bolt 96 x 71.55mm
- > PORTS: PCD Port Sizes 4 - 8 30 x 30
11 - 13 40 x 30
- > BSPP Ports Available
- > Alloy Body with Cast Iron Ends
- > D = CW Rotation
- > S = CCW Rotation

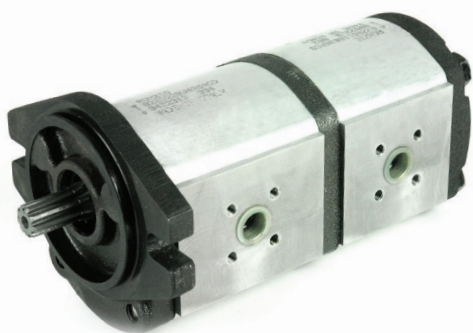
GROUP 2 EURO

FRONT	MIDDLE	REAR	CC/REV	MAX RPM	MAX PRESSURE BAR	
					Continuous	Peak
02ZAG04C032AD	02ZAG040032ID	02ZAG040032PD	4.4	4500	300	360
02ZAG06C032AD	02ZAG060032ID	02ZAG060032PD	6.28	4500	300	360
02ZAG08C032AD	02ZAG080032ID	02ZAG080032PD	8.16	3700	300	360
02ZAG11C033AD	02ZAG110033ID	02ZAG110033PD	11.3	3300	300	360
02ZAG14C033AD	02ZAG140033ID	02ZAG140033PD	14.45	2700	300	360
02ZAG17C033AD	02ZAG170033ID	02ZAG170033PD	16.95	2500	270	330
02ZAG20C033AD	02ZAG200033ID	02ZAG200033PD	20.1	2500	230	290
02ZAG25C033AD	02ZAG250033ID	02ZAG250033PD	25.75	2500	180	230
02ZAG31C033AD	02ZAG310033ID	02ZAG310033PD	31.4	2200	160	200

SPARE PARTS

MODEL DESCRIPTION

K2000000	11 - 31cc x 11-31cc Group 2 Joining Kit 2 + 2
K2000001	11 - 31cc x 4-8cc Group 2 Joining Kit 2 + 2
K2000002	4 - 8cc x 4-8cc Group 2 Joining Kit 2 + 2
K2000003	11 - 31cc Group 2 - Group 1 Joining Kit 2 + 2
K2000004	4 - 8cc Group 2 - Group 1 Joining Kit 2 + 2
02Z-S	Seal Kit - Front Pump
02Z-S-I-R	Seal Kit - Intermediate & Rear Pump
MIM30197	Shaft Seal for 11T 3/4" & 10T 17mm Shafts



PUMPS

Multiple Gear Pump Modules (Aluminium)



> SHAFT:	5/8" Keyed or 5/8" 9T Spline
> SPIGOT:	3 1/4"
> MOUNT:	2 Bolt SAE A
> PORTS:	<div> <div>UNO Port Sizes</div> <div>4 - 11</div> <div>14 - 31</div> </div> <div> <div>7/8" x 7/8" UNO</div> <div>1 1/16" x 7/8" UNO</div> </div>

- > Alloy Body with Cast Iron Ends
- > D = CW Rotation
- > S = CCW Rotation

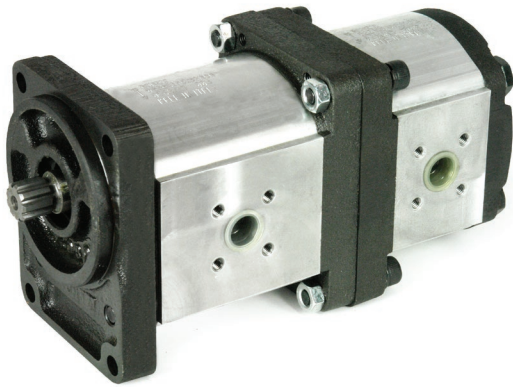
GROUP 2 SAE

FRONT	MIDDLE	REAR	CC/REV	MAX RPM	MAX PRESSURE BAR	
					Continuous	Peak
02ZCG04L432AD	02ZAG040032ID	02ZAG040032PD	4.4	4500	300	360
02ZCG06L432AD	02ZAG060032ID	02ZAG060032PD	6.28	4500	300	360
02ZCG08L432AD	02ZAG080032ID	02ZAG080032PD	8.16	3700	300	360
02ZCG11L432AD	02ZAG110033ID	02ZAG110033PD	11.3	3300	300	360
02ZCG14L433AD	02ZAG140033ID	02ZAG140033PD	14.45	2700	300	360
02ZCG17L433AD	02ZAG170033ID	02ZAG170033PD	16.95	2500	270	330
02ZCG20L433AD	02ZAG200033ID	02ZAG200033PD	20.1	2500	230	290
02ZCG25L433AD	02ZAG250033ID	02ZAG250033PD	25.75	2500	180	230
02ZCG31L433AD	02ZAG310033ID	02ZAG310033PD	31.4	2200	160	200

> MODEL CODES REFER TO KEYED SHAFTS

SPARE PARTS

MODEL	DESCRIPTION
K2000000	11 - 31cc x 11-31cc Group 2 Joining Kit 2 + 2
K2000001	11 - 31cc x 4-8cc Group 2 Joining Kit 2 + 2
K2000002	4 - 8cc x 4-8cc Group 2 Joining Kit 2 + 2
K2000003	11 - 31cc Group 2 - Group 1 Joining Kit 2 + 2
K2000004	4 - 8cc Group 2 - Group 1 Joining Kit 2 + 2
02Z-S	Seal Kit - Front Pump
02Z-S-I-R	Seal Kit - Intermediate & Rear Pump
MIM30197	Shaft Seal for 11T 3/4" & 10T 17mm Shafts



PUMPS

Multiple Gear Pump Modules (Aluminium)



- > SHAFT: 1.5 Taper or 9T DIN Spline
- > SPIGOT: 80mm
- > MOUNT: 4 Bolt German 100 x 72mm
- > PORTS: PCD 40 x 35

- > Standard Units
- > Special In-House Built Unit Customised to your Specifications
- > Compact Tandem Pumps
- > Retro Fitting to Obsolete Pump & Motor Models
- > Alloy Body with Cast Iron Ends
- > D = CW Rotation
- > S = CCW Rotation

GROUP 2

4 BOLT GERMAN PCD

CUSTOM OPTIONS

- > PORT OPTIONS:
 - Single Suction
 - Rear Ported
 - Custom Ported to Required Specification
- > REAR COVER OPTIONS:
 - Over Run Check Valves
 - Relief Cavity for Pumps and Motors
 - Case Drain Option
- > SHAFT OPTIONS:
 - $\frac{5}{8}$ " Keyed
 - 1:5 Taper Keyed
 - 1:8 Taper Keyed
 - $\frac{5}{8}$ " 9T Spline
 - 10T x 17mm Spline
 - 11T x $\frac{3}{4}$ " Spline



PUMPS

Multiple Gear Pump Modules (Aluminium)



> SHAFT:	1.5 Taper or 9T DIN Spline
> SPIGOT:	50mm
> MOUNT:	2 Bolt German 60 x 60
> MOUNTING HOLES:	5 o'clock / 11 o'clock
> PORTS:	PCD 40 x 35

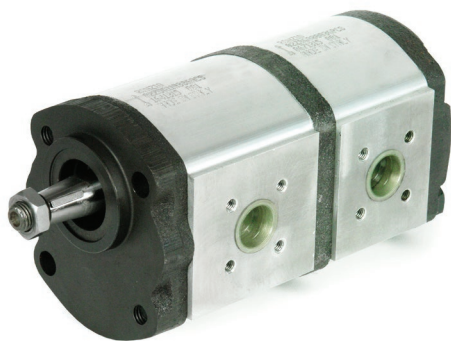
- > Standard Units
- > Special In-House Built Unit Customised to your Specifications
- > Compact Tandem Pumps
- > Retro Fitting to Obsolete Pump & Motor Models
- > Alloy Body with Cast Iron Ends
- > D = CW Rotation
- > S = CCW Rotation

GROUP 2

2 BOLT GERMAN D3 PCD

CUSTOM OPTIONS

> PORT OPTIONS:	Single Suction Rear Ported Custom Ported to Required Specification
> REAR COVER OPTIONS:	Over Run Check Valves Relief Cavity for Pumps and Motors Case Drain Option
> SHAFT OPTIONS:	5/8" Keyed 1:5 Taper Keyed 1:8 Taper Keyed 5/8" 9T Spline 10T x 17mm Spline 11T x 3/4" Spline



PUMPS

Multiple Gear Pump Modules (Aluminium)



> SHAFT:	1.5 taper or 9T DIN Spline
> SPIGOT:	50mm
> MOUNT:	2 Bolt German 60 x 60
> MOUNTING HOLES:	1 o'clock / 7 o'clock
> PORTS:	PCD 40 x 35

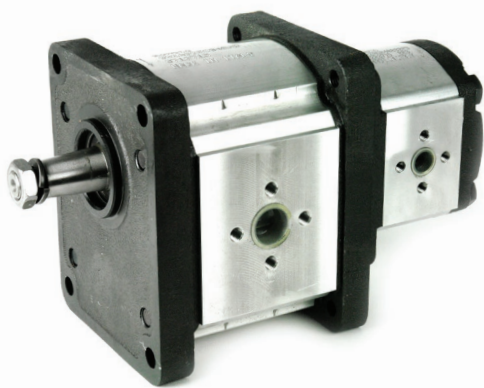
- > Standard Units
- > Special In-House Built Unit Customised to your Specifications
- > Compact Tandem Pumps
- > Retro Fitting to Obsolete Pump & Motor Models
- > Alloy Body with Cast Iron Ends
- > D = CW Rotation
- > S = CCW Rotation

GROUP 2

2 BOLT GERMAN M3 PCD

CUSTOM OPTIONS

> PORT OPTIONS:	Single Suction Rear Ported Custom Ported to Required Specification
> REAR COVER OPTIONS:	Over Run Check Valves Relief Cavity for Pumps and Motors Case Drain Option
> SHAFT OPTIONS:	5/8" Keyed 1:5 Taper Keyed 1:8 Taper Keyed 5/8" 9T Spline 10T x 17mm Spline 11T x 3/4" Spline



PUMPS

Multiple Gear Pump Modules (Aluminium)



> SHAFT:	1.8 Taper		
> SPIGOT:	50.8mm		
> MOUNT:	128 x 98mm		
> PORTS:	PCD Port Sizes	20 - 55	51 x 40
		60	62 x 51

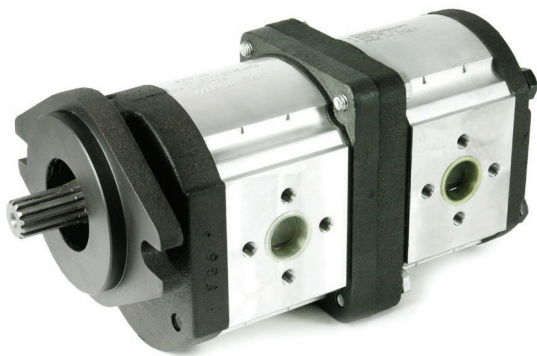
- > Alloy Body with Cast Iron Ends
- > D = CW Rotation
- > S = CCW Rotation

GROUP 3 EURO

FRONT	MIDDLE	REAR	CC/REV	MAX RPM	MAX PRESSURE BAR	
					Continuous	Peak
03ZAG20C048AD	03ZAG200048ID	03ZAG200048PD	20	3000	280	310
03ZAG25C048AD	03ZAG250048ID	03ZAG250048PD	25	3000	280	310
03ZAG30C048AD	03ZAG300048ID	03ZAG300048PD	30	3000	280	310
03ZAG35C048AD	03ZAG350048ID	03ZAG350048PD	35	3000	280	310
03ZAG40C048AD	03ZAG400048ID	03ZAG400048PD	40	2700	250	280
03ZAG45C048AD	03ZAG450048ID	03ZAG450048PD	45	2700	250	280
03ZAG55C048AD	03ZAG550048ID	03ZAG550048PD	55	2200	230	250
03ZAG60C047AD			60	2000	200	220

SPARE PARTS

MODEL	DESCRIPTION
03Z-S	Seal Kit - Front Pump
KGUZ3AIN	Seal Kit - Intermediate & Rear Pump
K3000029	Group 3 - Group 1 Joining Kit
K3000030	Group 3 - Group 2 Joining Kit
K3000034	Group 3 - Group 3 Joining Kit



PUMPS

Multiple Gear Pump Modules (Aluminium)



- > SHAFT: $\frac{7}{8}$ " x 13T Spline or $\frac{7}{8}$ " Straight Keyed
- > SPIGOT: 4"
- > MOUNT: 2 Bolt SAE B
- > PORTS: PCD 51 x 40

- > Alloy Body with Cast Iron Ends
- > D = CW Rotation
- > S = CCW Rotation

GROUP 3 SAE

FRONT	MIDDLE	REAR	CC/REV	MAX RPM	MAX PRESSURE BAR	
					Continuous	Peak
03ZBG20B348AD	03ZAG200048ID	03ZAG200048PD	20	3000	280	310
03ZBG25B348AD	03ZAG250048ID	03ZAG250048PD	25	3000	280	310
03ZBG30B348AD	03ZAG300048ID	03ZAG300048PD	30	3000	280	310
03ZBG35B348AD	03ZAG350048ID	03ZAG350048PD	35	3000	280	310
03ZBG40B348AD	03ZAG400048ID	03ZAG400048PD	40	2700	250	280
03ZBG45B348AD	03ZAG450048ID	03ZAG450048PD	45	2700	250	280
03ZBG55B348AD	03ZAG550048ID	03ZAG550048PD	55	2200	230	250
03ZBG60B348AD			60	2000	200	220

> MODEL CODES REFER TO SPLINE SHAFTS

SPARE PARTS

MODEL	DESCRIPTION
-------	-------------

KGUZ3BAN	Seal Kit - Front Pump
KGUZ3AIN	Seal Kit - Intermediate & Rear Pump
K3000029	Group 3 - Group 1 Joining Kit
K3000030	Group 3 - Group 2 Joining Kit
K3000034	Group 3 - Group 3 Joining Kit



PUMPS

Multiple Gear Pump (Cast Iron)



> STANDARD SHAFTS:

$\frac{5}{8}$ " 9T
 $\frac{3}{4}$ " x 11T
 $\frac{7}{8}$ " 13T
 $\frac{5}{8}$ " Keyed
 $\frac{3}{4}$ " Keyed
 $\frac{7}{8}$ " Keyed
 2 Bolt SAE A
 2 Bolt SAE B

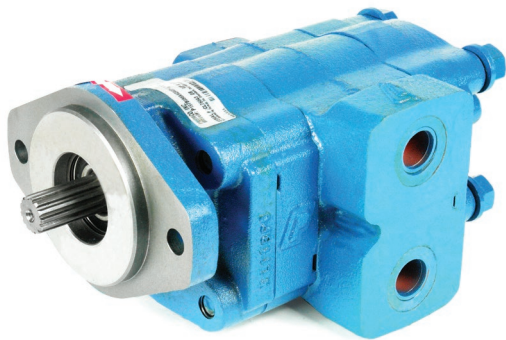
> STANDARD MOUNTS:

P124 BUSH

CC/REV	MAX PRESSURE BAR Continuous	GEAR WIDTH	MAX RPM
10.2	240	$\frac{1}{2}$ "	3000
15.2	240	$\frac{3}{4}$ "	3000
20.3	240	1"	3000
25.4	240	1 $\frac{1}{4}$ "	3000
30.5	220	1 $\frac{1}{2}$ "	3000
35.6	200	1 $\frac{3}{4}$ "	3000
40.6	170	2"	3000

SPARE PARTS

MODEL	DESCRIPTION
P124-S	Seal Kit - Front Pump
P124-T	Seal Kit - Multiple Section



PUMPS

**Multiple Gear Pump
(Cast Iron)**



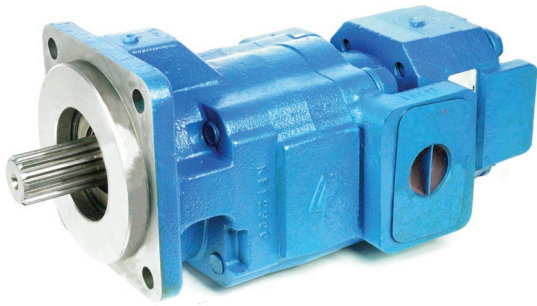
- > STANDARD SHAFTS:
 - 1" Keyed
 - $\frac{7}{8}$ " 13T
 - 1" x 15T
- > STANDARD MOUNTS:
 - 2 Bolt SAE B
 - 4 Bolt SAE B
 - 4 Bolt SAE C
- > 'C' SHAFTS:
 - $\frac{7}{8}$ " Keyed
 - 1 $\frac{1}{4}$ " Keyed
 - 1 $\frac{1}{4}$ " 14T

P197 BUSH

CC/REV	MAX PRESSURE BAR Continuous	GEAR WIDTH	MAX RPM
16.5	240	$\frac{1}{2}$ "	3000
24.3	240	$\frac{3}{4}$ "	3000
32.3	240	1"	3000
40.4	240	1 $\frac{1}{4}$ "	3000
48.4	240	1 $\frac{1}{2}$ "	3000
56.5	220	1 $\frac{3}{4}$ "	3000
64.4	200	2"	3000

SPARE PARTS

MODEL	DESCRIPTION
P197-S	Seal Kit - Front Pump
P197-T	Seal Kit - Multiple Section



PUMPS

Multiple Gear Pump (Cast Iron)



- > STANDARD SHAFTS:
 - $\frac{7}{8}$ " x 13T
 - 1 $\frac{1}{4}$ " 14T
 - 1 $\frac{1}{4}$ " Keyed
- > STANDARD MOUNTS:
 - 2 Bolt SAE B
 - 2 Bolt SAE C
 - 4 Bolt SAE B
 - 4 Bolt SAE C
- > 'C' SHAFTS:
 - 1" 15T

P257 BUSH

CC/REV	MAX PRESSURE BAR Continuous	GEAR WIDTH	MAX RPM
31.3	240	$\frac{3}{4}$ "	2400
41.8	240	1"	2400
52.2	240	1 $\frac{1}{4}$ "	2400
62.7	240	1 $\frac{1}{2}$ "	2400
73.1	220	1 $\frac{3}{4}$ "	2400
83.6	200	2"	2400
94.0	190	2 $\frac{1}{4}$ "	2400
104.5	170	2 $\frac{1}{2}$ "	2400

SPARE PARTS

MODEL	DESCRIPTION
P257-S	Seal Kit - Front Pump
P257-T	Seal Kit - Multiple Section



PUMPS

Multiple Gear Pump (Cast Iron)



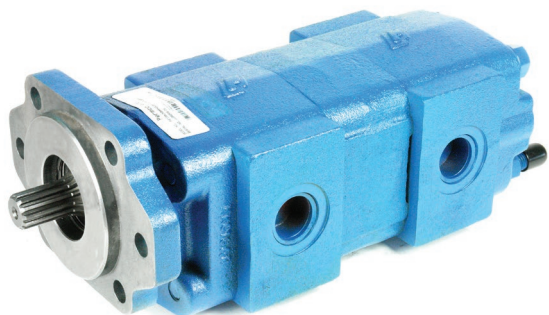
- > STANDARD SHAFTS:
 - 1 ¼" Keyed
 - 1 ¼" 14T
- > STANDARD MOUNTS:
 - 2 Bolt SAE B
 - 2 Bolt SAE C
 - 4 Bolt SAE B
 - 4 Bolt SAE C
 - 4 Bolt SAE D
- > 'C' SHAFTS:
 - 1 ½" 17T

P360 BUSH

CC/REV	MAX PRESSURE BAR Continuous	GEAR WIDTH	MAX RPM
44.3	240	¾"	2400
59.0	240	1"	2400
73.8	240	1 ¼"	2400
88.5	240	1 ½"	2400
103.5	240	1 ¾"	2400
118.0	240	2"	2400
132.8	220	2 ¼"	2400
147.5	200	2 ½"	2400

SPARE PARTS

MODEL	DESCRIPTION
P360-S	Seal Kit - Front Pump
P360-T	Seal Kit - Multiple Section



PUMPS

**Multiple Gear Pump
(Cast Iron)**



- > STANDARD SHAFTS:
 - $\frac{7}{8}$ " 13T
 - 1" Keyed
 - $\frac{7}{8}$ " Keyed
- > STANDARD MOUNTS:
 - 2 Bolt SAE A
 - 2 Bolt SAE B
 - 2 Bolt SAE B-Short
 - 4 Bolt SAE B
 - 6 Bolt Round
 - Chelsea Clover

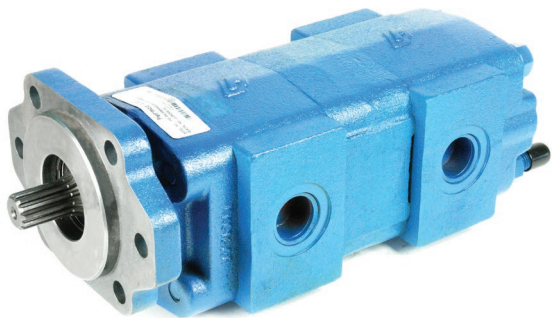
> Contact Us for the Full Range of 'C' Shaft Options

P2100 ROLLER BEARING

CC/REV	MAX PRESSURE BAR Continuous	GEAR WIDTH	MAX RPM
16.1	205	$\frac{1}{2}$ "	2400
24.2	205	$\frac{3}{4}$ "	2400
32.2	205	1"	2400
40.4	205	1 $\frac{1}{4}$ "	2400
48.4	205	1 $\frac{1}{2}$ "	2400
56.5	170	1 $\frac{3}{4}$ "	2400
64.6	170	2"	2400

SPARE PARTS

MODEL	DESCRIPTION
<u>P2100-S</u>	Seal Kit - Front Pump
<u>P2100-S-C</u>	Seal Kit 'C' Shaft



PUMPS

**Multiple Gear Pump
(Cast Iron)**



- > STANDARD SHAFTS:
- 7/8" Keyed
 - 1" Keyed
 - 5/8" 9T
 - 7/8" 13T
- > STANDARD MOUNTS:
- 2 Bolt SAE A
 - 2 Bolt SAE B
 - 4 Bolt SAE B
 - 4 Bolt SAE C
 - 6 Bolt Round

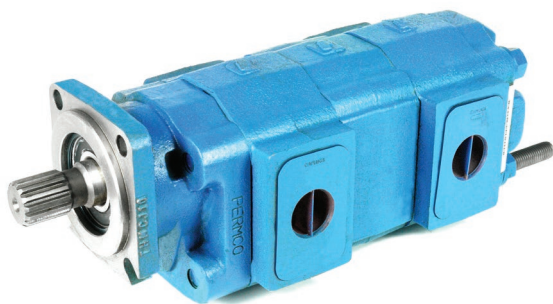
> Contact Us for the Full Range of 'C' Shaft Options

P3100 ROLLER BEARING

CC/REV	MAX PRESSURE BAR Continuous	GEAR WIDTH	MAX RPM
16.2	205	1/2"	2400
24.2	205	3/4"	2400
32.3	205	1"	2400
40.4	205	1 1/4"	2400
48.4	205	1 1/2"	2400
56.5	170	1 3/4"	2400
64.6	170	2"	2400

SPARE PARTS

MODEL	DESCRIPTION
P3000-S	Seal Kit - Front Pump
P3000-S-C	Seal Kit 'C' Shaft



PUMPS

Multiple Gear Pump (Cast Iron)



- > STANDARD SHAFTS:
 - 1 1/4" Keyed
 - 3/8" 13T
 - 1 1/4" 14T
- > STANDARD MOUNTS:
 - 2 Bolt SAE B
 - 2 Bolt SAE C
 - 4 Bolt SAE B
 - 4 Bolt SAE C
 - 6 Bolt Round
- > 'C' SHAFTS:
 - 1" Keyed
 - 1 1/8" Keyed
 - 1" 6T
 - 1" 15T

P5100 ROLLER BEARING

CC/REV	MAX PRESSURE BAR Continuous	GEAR WIDTH	MAX RPM
20.9	205	1/2"	2400
31.3	205	3/4"	2400
41.8	205	1"	2400
52.2	205	1 1/4"	2400
62.7	205	1 1/2"	2400
73.1	170	1 3/4"	2400
83.6	170	2"	2400
94.0	153	2 1/4"	2400
104.5	153	2 1/2"	2400

SPARE PARTS

MODEL	DESCRIPTION
P5000-S	Seal Kit - Front Pump
P5000-S-C	Seal Kit - Front Pump 'C' Shaft

PUMPS

Multiple Gear Pump (Cast Iron)



- > STANDARD SHAFTS:
 - 1 1/4" 14T
 - 1 1/4" Keyed
- > STANDARD MOUNTS:
 - 2 Bolt SAE C
 - 4 Bolt SAE B
 - 4 Bolt SAE C
 - 4 Bolt SAE D
- > 'C' SHAFTS:
 - 1 1/4" Keyed
 - 1 3/4" 13T
 - KOMATSU 19T

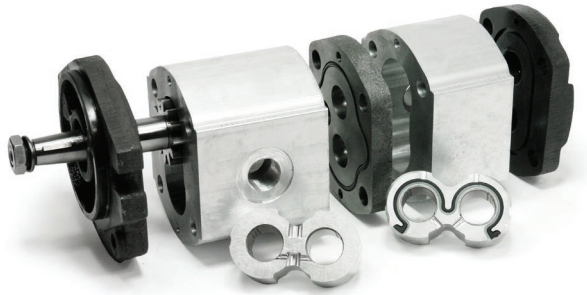
P7600 ROLLER BEARING

CC/REV	MAX PRESSURE BAR Continuous	GEAR WIDTH	MAX RPM
50.4	205	3/4"	2400
67.2	205	1"	2400
84.0	205	1 1/4"	2400
100.8	205	1 1/2"	2400
117.6	205	1 3/4"	2400
134.4	205	2"	2400
151.2	170	2 1/4"	2400
167.8	170	2 1/2"	2400
184.8	153	2 3/4"	2400
201.6	153	3"	2400

SPARE PARTS

MODEL	DESCRIPTION
-------	-------------

P7500-S	Seal Kit - Front Pump
---------	-----------------------



PUMPS

Gear Pump Special Assembly Build

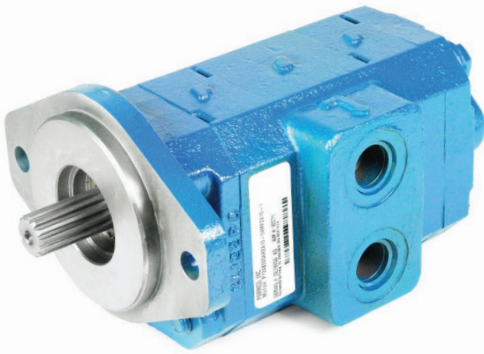
- > Special In-House Built Unit Customised to your Specifications
- > Compact Tandem Pumps
- > Retro Fitting to Obsolete Pump and Motor Models



RONZIO GROUP 2

CUSTOM OPTIONS

- > **PORT OPTIONS:**
 - Single Suction
 - Rear Ported
 - Custom Ported to Required Specification
- > **REAR COVER OPTIONS:**
 - Over Run Check Valves
 - Relief Cavity for Pumps & Motors
 - Case Drain Option
- > **SHAFT OPTIONS:**
 - $\frac{5}{8}$ " Keyed
 - 1:5 Taper Keyed
 - 1:8 Taper Keyed
 - $\frac{5}{8}$ " 9T Spline
 - 9T DIN Spline
 - 11T x $\frac{3}{4}$ " Spline
 - 10T x 17mm Spline



PUMPS

Gear Pump Special Assembly Build

> Special In-House Built Unit Customised to your Specifications



P124 BUSH

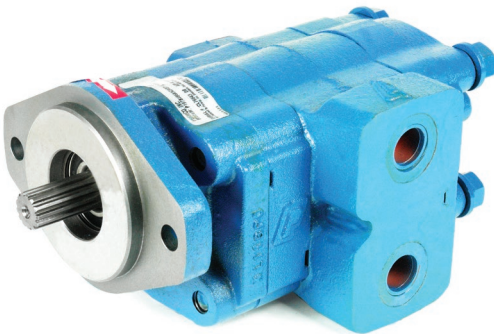
CUSTOM OPTIONS

> SHAFT OPTIONS:

11T x 3/4" Spline
5/8" Keyed
3/4" Keyed
Group 2 1:8 Taper

> MOUNT OPTIONS:

Group 2 4 Bolt Euro
Over Hung Load Adaptor - Fan Drives
2 Bolt SAE A
7/8" Keyed Shaft



P197 BUSH

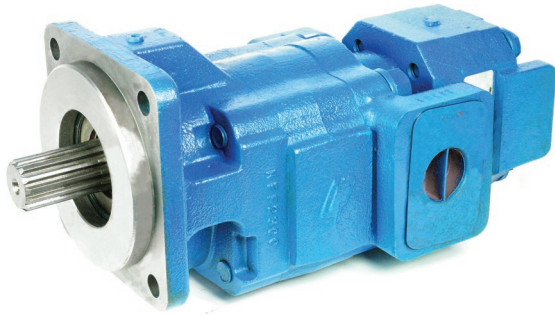
CUSTOM OPTIONS

> MOUNT OPTIONS:

2 Bolt SAE A

> DRIVE THROUGH OPTIONS:

Add a Pump Sealed
Add a Pump 2 Bolt SAE A
Series Step Down 197 - 124 64cc - 5cc/Rev (Single Suction Available)



PUMPS

Gear Pump Special Assembly Build

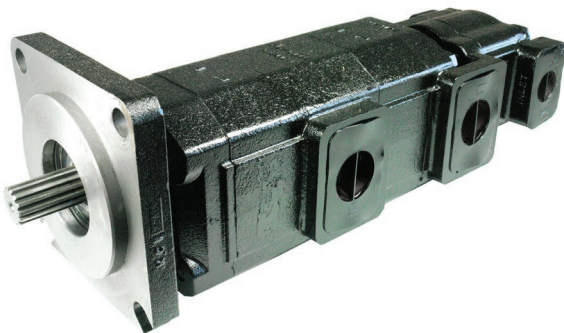
> Special In-House Built Unit Customised to your Specifications



P257 BUSH

CUSTOM OPTIONS

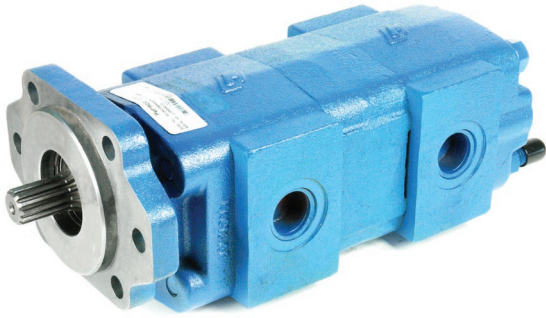
- > DRIVE THROUGH OPTIONS:
- Add a Pump Sealed - 2 Bolt SAE A
 - Add a Pump Sealed - 2 Bolt SAE B
 - Series Step Down - 257 - 124 104cc - 5cc/Rev (Single Suction Available)
 - Series Step Down - 257 - 197 104cc - 16cc/Rev (Single Suction Available)



P360 BUSH

CUSTOM OPTIONS

- > MOUNT OPTIONS:
- 4 Bolt SAE D
- > DRIVE THROUGH OPTIONS:
- Series Step Down 360 - 124 (147cc - 5cc/Rev)
 - Series Step Down 360 - 197 (147cc - 16cc/Rev)
 - Add a Pump Sealed - 2 Bolt SAE A
 - Add a Pump Sealed - 2 Bolt SAE B



PUMPS

Gear Pump Special Assembly Build

> Special In-House Built Unit Customised to your Specifications

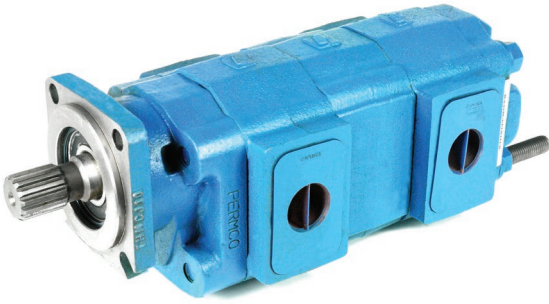


P2100, P3000, P3100 BEARING

CUSTOM OPTIONS

> CONTINENTAL SHAFT OPTIONS:

- 9T x $\frac{5}{8}$ " Spline
- 11T x $\frac{3}{4}$ " Spline
- 13T x $\frac{7}{8}$ " Long Spline
- 6T x 1" Spline
- 15T x 1" Spline
- 14T x 1 $\frac{1}{4}$ " Spline
- $\frac{3}{4}$ " Straight Keyed
- $\frac{7}{8}$ " Straight Keyed Long
- 1 $\frac{1}{4}$ " Straight Keyed



PUMPS

Gear Pump Special Assembly Build

> Special In-House Built Unit Customised to your Specifications



P5000, P5100 BEARING

CUSTOM OPTIONS

> CONTINENTAL SHAFT OPTIONS:

- 13T x $\frac{7}{8}$ " Long Spline
- 15T x 1" Spline
- 1" Straight Keyed

P7500, P7600 BEARING

CUSTOM OPTIONS

> CONTINENTAL SHAFT OPTIONS:

- 14T x 1 $\frac{1}{4}$ " Long Spline
- 19T x 1 $\frac{3}{8}$ " Spline
- 13T x 1 $\frac{3}{4}$ " Spline



PUMPS

Special Assembly Build

> PORT OPTIONS:

1 ½" Code 61 Flange
2" Code 61 Flange



DRY VALVE OPTION

GENERAL INFORMATION

A dry valve consists of an air or electrically operated shut off valve in the inlet line of the pump; usually mounted to the pump inlet port to simplify plumbing. Included in the valve is an orifice which permits sufficient fluid to pass to lubricate the pump parts when the valve is in the off (dry) mode. In some situations a bypass flow control mounted to the pump outlet is used.

The purpose of this is to re-circulate a portion of the outlet flow back to the pump inlet to prevent cavitation during high speed operation of the pump when the dry valve is open (wet) mode. This also reduces the flow rate to the compacting cylinders and thus compacting speed is not excessive preventing slamming and hammering of the compacting machinery. The compacting machinery is normally designed to operate at low pump speed which limits the rate of operation.

If, while the dry valve is closed (dry mode), pressure builds up in the discharge side of the system (above 20 PSI), the pump will be damaged. The dry valve in the off (dry) mode permits only a flow sufficient to lubricate the pump; while adequate to lubricate there is insufficient fluid to fill the pump displacement and the pump exhibits severe cavitation. No damage from this occurs unless there is pressure to cause the cavities (oil droplets) to collapse. System back pressure exceeding 20 PSI will provide enough energy to collapse the cavities (oil droplets) and damage the pump.



PUMPS

Single Vane Pump



- > SHAFT: $\frac{7}{8}$ " x 13T Spline
 $\frac{7}{8}$ " Straight Keyed
1" x 15T Spline
- > SPIGOT: 4"
- > MOUNT: 2 Bolt SAE B
- > PORTS: 1 $\frac{1}{2}$ " Code 61 Suction
1" Code 61 Pressure

> Contact Us for Replacement Shafts and Cartridges

VT6CM

MODEL	CC/REV	MAX RPM	MAX PRESSURE BAR Continuous
VT6CM B3	10.8	2800	240
VT6CM B5	17.2	2800	240
VT6CM B6	21.3	2800	240
VT6CM B8	26.4	2800	240
VT6CM B10	34.1	2800	240
VT6CM B12	37.1	2800	240
VT6CM B14	46.0	2800	240
VT6CM B17	58.3	2800	240
VT6CM B20	63.8	2800	240
VT6CM B22	70.3	2800	240
VT6CM B25	79.3	2500	240
VT6CM B28	88.8	2500	210
VT6CM B31	100	2500	210

SPARE PARTS

MODEL	DESCRIPTION
VS24-10133	Seal Kit



PUMPS

Single Vane Pump

- > SHAFT: 1 1/4" Straight Keyed
1 1/4" x 14T Spline
- > SPIGOT: 5"
- > MOUNT: 2 Bolt SAE C
- > PORTS: 2" Code 61 Suction
1 1/4" Code 61 Pressure



> Contact Us for Replacement Shafts and Cartridges

VT6DM

MODEL	CC/REV	MAX RPM	MAX PRESSURE BAR Continuous
VT6DM B14	47.6	2500	240
VT6DM B17	58.2	2500	240
VT6DM B20	66.0	2500	240
VT6DM B24	79.5	2500	240
VT6DM B28	89.7	2500	240
VT6DM B31	98.3	2500	240
VT6DM B35	111.0	2500	240
VT6DM B38	120.3	2500	240
VT6DM B42	136.0	2200	240
VT6DM B45	145.7	2200	240
VT6DM B50	158.0	2200	210
VT6DM B61	190.5	2200	120

SPARE PARTS

MODEL	DESCRIPTION
VS24-10138	Seal Kit



PUMPS

Single Vane Pump



- > SHAFT: 1 ¼" x 14T Spline
1 ½" Straight Keyed
1 ½" x 17T Spline
- > SPIGOT: 5"
- > MOUNT: 2 Bolt SAE C
- > PORTS: 3" Code 61 Suction
1 ½" Code 61 Pressure

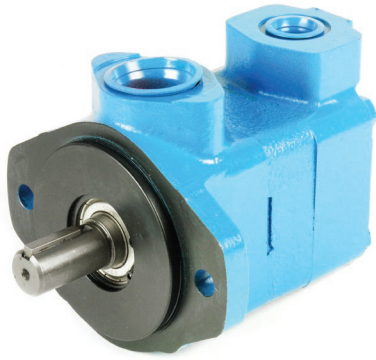
> Contact Us for Replacement Shafts and Cartridges

VT6EM

MODEL	CC/REV	MAX RPM	MAX PRESSURE BAR Continuous
VT6EM B42	132.8	2200	240
VT6EM B45	142.4	2200	240
VT6EM B50	158.5	2200	240
VT6EM B52	164.8	2200	240
VT6EM B57	180.7	2200	240
VT6EM B62	196.7	2200	240
VT6EM B66	213.3	2200	240
VT6EM B72	227.1	2200	240
VT6EM B85	269.8	2000	75

SPARE PARTS

MODEL	DESCRIPTION
VS24-10186	Seal Kit



PUMPS

Single Vane Pump

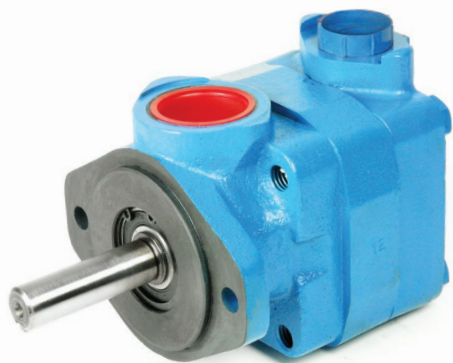


- > SHAFT: $\frac{3}{4}$ " Straight Keyed
 $\frac{5}{8}$ " x 9T Spline
 $\frac{3}{4}$ " x 11T Spline
- > MOUNT: 2 Bolt SAE A
- > INLET PORT: $1 \frac{5}{16}$ " UNO
- > OUTLET PORT: $\frac{3}{4}$ " UNO

> Contact Us for Spare Parts

V10

MODEL	CC/REV	MAX RPM	MAX PRESSURE BAR Continuous
<u>V10-1</u>	3.28	4800	172
<u>V10-2</u>	6.56	4500	172
<u>V10-3</u>	9.84	4000	172
<u>V10-4</u>	13.12	3400	172
<u>V10-5</u>	16.4	3200	172
<u>V10-6</u>	19.5	3000	151
<u>V10-7</u>	22.8	2800	137



PUMPS

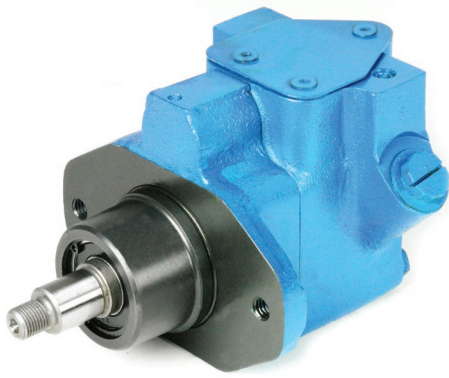
Single Vane Pump

VICKERS

- > SHAFT: $\frac{3}{4}$ " Straight Keyed - 3" Extended
 $\frac{3}{4}$ " x 11T Spline
 $\frac{3}{4}$ " x 11T Spline - 1.26" Extended
 $\frac{5}{8}$ " x 9T Spline
- > MOUNT: 2 Bolt SAE A
- > INLET PORT: 1 $\frac{5}{8}$ " UNO
- > OUTLET PORT: 1 $\frac{1}{16}$ " UNO

V20

MODEL	CC/REV	MAX RPM	MAX PRESSURE BAR Continuous
<u>V20-5</u>	16.4	3400	172
<u>V20-6</u>	19.5	3000	172
<u>V20-7</u>	22.8	2800	172
<u>V20-8</u>	26.5	2800	172
<u>V20-9</u>	29.7	2800	172
<u>V20-11</u>	36.4	2500	172
<u>V20-12</u>	39	2400	151
<u>V20-13</u>	42.5	2400	151



PUMPS

Single Vane Pump

- > Max Pressure - 140 Bar
- > Bolt On Filter Options Available

VICKERS

VTM42 STEERING

VTM42 STEERING ORDERING CODE EXAMPLE

	<u>VTM42</u>	<u>10</u>	<u>15</u>	<u>05</u>	<u>F</u>	<u>7</u>	<u>R</u>	
MODEL 10 = 3.3cc/rev 20 = 6.6cc/rev 40 = 13cc/rev 50 = 16.5cc/rev 60 = 19.5cc/rev								
FLOW RATE (l/min) 15 - 6 20 - 8 25 - 9.5 30 - 11 35 - 13 40 - 15 45 - 17 50 - 19 65 - 25								ROTATION R, R/H, L, L/H
CRACKING PRESSURE (BAR) 05 - 35 07 - 52 10 - 70 12 - 86 15 - 100 17 - 120 20 - 140								RESERVOIR OR MANIFOLD 7 - 1147 ml NO - No Reservoir 11 - 1884 ml
								RESERVOIR FILTER F - Filter Element (Omit if Not Required)

SPARE PARTS

MODEL	DESCRIPTION
-------	-------------

922904	Seal Kit
263585	Shaft Seal
213984	Filter



PUMPS

Double Vane Pump



- > SHAFT: $\frac{7}{8}$ " x 13T Spline
 $\frac{7}{8}$ " Straight Keyed
1" x 15T Spline
- > HEAVY DUTY SHAFT: 1" Straight Keyed (VT6CCMW)
- > SPIGOT: 4"
- > MOUNT: 2 Bolt SAE B
- > PORTS: 3" Code 61 Suction
1" Code 61 Pressure

> Contact Us for Replacement Shafts and Cartridges

VT6CCM (P1)

MODEL	CC/REV	MAX RPM	MAX PRESSURE BAR Continuous
VT6CCM B3	10.8	2800	240
VT6CCM B5	17.2	2800	240
VT6CCM B6	21.3	2800	240
VT6CCM B8	26.4	2800	240
VT6CCM B10	34.1	2800	240
VT6CCM B12	37.1	2800	240
VT6CCM B14	46.0	2800	240
VT6CCM B17	58.3	2800	240
VT6CCM B20	63.8	2800	240
VT6CCM B22	70.3	2800	240
VT6CCM B25	79.3	2500	240
VT6CCM B28	88.8	2500	210
VT6CCM B31	100	2500	210

> SEE PAGE OVER FOR (P2) SPECIFICATIONS

VT6CCM (P2)

MODEL	CC/REV	MAX RPM	MAX PRESSURE BAR Continuous
VT6CCM B3	10.8	2800	240
VT6CCM B5	17.2	2800	240
VT6CCM B6	21.3	2800	240
VT6CCM B8	26.4	2800	240
VT6CCM B10	34.1	2800	240
VT6CCM B12	37.1	2800	240
VT6CCM B14	46.0	2800	240
VT6CCM B17	58.3	2800	240
VT6CCM B20	63.8	2800	240
VT6CCM B22	70.3	2800	240
VT6CCM B25	79.3	2500	240
VT6CCM B28	88.8	2500	210
VT6CCM B31	100	2500	210

SPARE PARTS

MODEL	DESCRIPTION
VS24-10352	Seal Kit - VT6CCM
VS14-97724	Seal Kit - VT6CCMW (1" Shaft)



PUMPS

Double Vane Pump



- > SHAFT: 1 1/4" x 14T Spline
1 1/4" Straight Keyed
- > SPIGOT: 5"
- > MOUNT: 2 Bolt SAE C
- > SUCTION PORT: 3" SAE Code 61
- > PRESSURE PORT (P1): 1 1/4" SAE Code 61
- > PRESSURE PORT (P2): 1" SAE Code 61

> Contact Us for Replacement Shafts and Cartridges

VT6DCM (P1)

MODEL	CC/REV	MAX RPM	MAX PRESSURE BAR Continuous
<u>VT6DCM B14</u>	47.6	2500	240
<u>VT6DCM B17</u>	58.2	2500	240
<u>VT6DCM B20</u>	66.0	2500	240
<u>VT6DCM B24</u>	79.5	2500	240
<u>VT6DCM B28</u>	89.7	2500	240
<u>VT6DCM B31</u>	98.3	2500	240
<u>VT6DCM B35</u>	110.0	2500	240
<u>VT6DCM B38</u>	120.3	2500	240
<u>VT6DCM B42</u>	136.0	2200	240
<u>VT6DCM B45</u>	145.7	2200	240
<u>VT6DCM B50</u>	158.0	2200	210
<u>VT6DCM B61</u>	190.5	2200	80

> SEE PAGE OVER FOR (P2) SPECIFICATIONS

VT6DCM (P2)

MODEL	CC/REV	MAX RPM	MAX PRESSURE BAR
VT6DCM B3	10.8	2800	240
VT6DCM B5	17.2	2800	240
VT6DCM B6	21.3	2800	240
VT6DCM B8	26.4	2800	240
VT6DCM B10	34.1	2800	240
VT6DCM B12	37.1	2800	240
VT6DCM B14	46.0	2800	240
VT6DCM B15	50.5	2800	240
VT6DCM B17	58.3	2800	240
VT6DCM B20	63.8	2800	240
VT6DCM B22	70.3	2800	240
VT6DCM B25	79.3	2500	240
VT6DCM B28	88.8	2500	210
VT6DCM B31	100.0	2500	210

SPARE PARTS

MODEL	DESCRIPTION
VS24-10170	Seal Kit



PUMPS

Double Vane Pump



- > SHAFT:
 - 1 ¼" x 14T Spline
 - 1 ¼" Straight Keyed
 - 1 ½" Straight Keyed
 - 1 ½" 17 Teeth
- > SPIGOT: 5"
- > MOUNT: 2 Bolt SAE C
- > SUCTION PORT: 3 ½" SAE Code 61
- > PRESSURE PORT (P1): 1 ½" SAE Code 61
- > PRESSURE PORT (P2): 1" SAE Code 61

> Contact Us for Replacement Shafts and Cartridges

VT6ECM (P1)

MODEL	CC/REV	MAX RPM	MAX PRESSURE BAR Continuous
<u>VT6ECM B42</u>	132.3	2200	240
<u>VT6ECM B45</u>	142.4	2200	240
<u>VT6ECM B50</u>	158.5	2200	240
<u>VT6ECM B52</u>	164.8	2200	240
<u>VT6ECM B57</u>	180.7	2200	240
<u>VT6ECM B62</u>	196.7	2200	240
<u>VT6ECM B66</u>	213.3	2200	240
<u>VT6ECM B72</u>	227.1	2200	240
<u>VT6ECM B85</u>	269.8	2000	75

> SEE PAGE OVER FOR (P2) SPECIFICATIONS

VT6ECM (P2)

MODEL	CC/REV	MAX RPM	MAX PRESSURE BAR Continuous
VT6ECM B3	10.8	2800	240
VT6ECM B5	17.2	2800	240
VT6ECM B6	21.3	2800	240
VT6ECM B8	26.4	2800	240
VT6ECM B10	34.1	2800	240
VT6ECM B12	37.1	2800	240
VT6ECM B14	46.0	2800	240
VT6ECM B15	50.5	2800	240
VT6ECM B17	58.3	2800	240
VT6ECM B20	63.8	2800	240
VT6ECM B22	70.3	2800	240
VT6ECM B25	79.3	2500	240
VT6ECM B28	88.8	2500	210
VT6ECM B31	100.0	2500	210

SPARE PARTS

MODEL	DESCRIPTION
VS24-10242	Seal Kit



PUMPS

Double Vane Pump



- > SHAFT:
 - 1 ¼" x 14T Spline
 - 1 ¼" Straight Keyed
 - 1 ½" Straight Keyed
 - 1 ½" 17 Teeth
- > SPIGOT:
 - 5"
- > MOUNT:
 - 2 Bolt SAE C
- > SUCTION PORT:
 - 3 ½" SAE Code 61
- > PRESSURE PORT (P1):
 - 1 ½" SAE Code 61
- > PRESSURE PORT (P2):
 - 1" SAE Code 61

> Contact Us for Replacement Shafts and Cartridges

VT6EDM (P1)

MODEL	CC/REV	MAX RPM	MAX PRESSURE BAR Continuous
<u>VT6EDM B42</u>	132.3	2200	240
<u>VT6EDM B45</u>	142.4	2200	240
<u>VT6EDM B50</u>	158.5	2200	240
<u>VT6EDM B52</u>	164.8	2200	240
<u>VT6EDM B57</u>	180.7	2200	240
<u>VT6EDM B62</u>	196.7	2200	240
<u>VT6EDM B66</u>	213.3	2200	240
<u>VT6EDM B72</u>	227.1	2200	240
<u>VT6EDM B85</u>	269.8	2000	75

> SEE PAGE OVER FOR (P2) SPECIFICATIONS

VT6EDM (P2)

MODEL	CC/REV	MAX RPM	MAX PRESSURE BAR Continuous
VT6EDM B3	10.8	2800	240
VT6EDM B5	17.2	2800	240
VT6EDM B6	21.3	2800	240
VT6EDM B8	26.4	2800	240
VT6EDM B10	34.1	2800	240
VT6EDM B12	37.1	2800	240
VT6EDM B14	46.0	2800	240
VT6EDM B15	50.5	2800	240
VT6EDM B17	58.3	2800	240
VT6EDM B20	63.8	2800	240
VT6EDM B22	70.3	2800	240
VT6EDM B25	79.3	2500	240
VT6EDM B28	88.8	2500	240
VT6EDM B31	100.0	2500	240

SPARE PARTS

MODEL	DESCRIPTION
VS24-10219	Seal Kit



PUMPS

Triple Vane Pump



- > SHAFT:
 - 1 ¼" Straight Keyed
 - 1 ¼" x 14T Spline
 - 1 ½" Straight Keyed
 - 1 ½" x 17T Spline
- > MOUNT:
 - 2 Bolt SAE C
- > SUCTION PORT:
 - 4" Code 61
- > PRESSURE PORT (P1):
 - 1 ¼" Code 61 Split Flange
- > PRESSURE PORT (P2):
 - 1" Code 61 Split Flange
- > PRESSURE PORT (P3):
 - 1" Code 61 Split Flange

> Contact Us for Replacement Shafts and Cartridges

VT6DCCM (P1)

MODEL	CC/REV	MAX RPM	MAX PRESSURE BAR Continuous
<u>VT6DCCM B14</u>	47.6	2500	240
<u>VT6DCCM B17</u>	58.2	2500	240
<u>VT6DCCM B20</u>	66.0	2500	240
<u>VT6DCCM B24</u>	79.5	2500	240
<u>VT6DCCM B28</u>	89.7	2500	240
<u>VT6DCCM B31</u>	98.3	2500	240
<u>VT6DCCM B35</u>	110.0	2500	240
<u>VT6DCCM B38</u>	120.3	2500	240
<u>VT6DCCM B42</u>	136.0	2200	240
<u>VT6DCCM B45</u>	145.7	2200	240
<u>VT6DCCM B50</u>	158.0	2200	210
<u>VT6DCCM B61</u>	190.5	2200	80

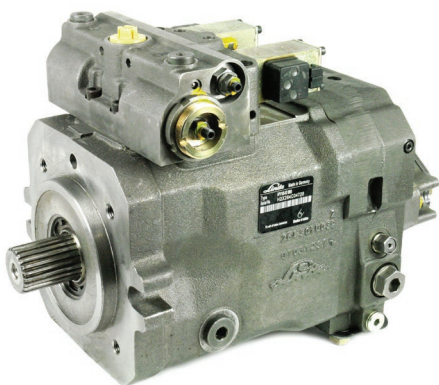
> SEE PAGE OVER FOR (P2) & (P3) SPECIFICATIONS

VT6DCCM (P2 & P3)

MODEL	CC/REV	MAX RPM	MAX PRESSURE BAR Continuous
VT6DCCM B3	10.8	2800	240
VT6DCCM B5	17.2	2800	240
VT6DCCM B6	21.3	2800	240
VT6DCCM B8	26.4	2800	240
VT6DCCM B10	34.1	2800	240
VT6DCCM B12	37.1	2800	240
VT6DCCM B14	46.0	2800	240
VT6DCCM B15	50.5	2800	240
VT6DCCM B17	58.3	2800	240
VT6DCCM B20	63.8	2800	240
VT6DCCM B22	70.3	2800	240
VT6DCCM B25	79.3	2500	240
VT6DCCM B28	88.8	2500	210
VT6DCCM B31	100.0	2500	210

SPARE PARTS

MODEL	DESCRIPTION
VS24-25575	Seal Kit



PUMPS

Piston Pump

- > Closed Loop Pump
- > CONTROLLERS: Electro-Hydraulic
Pilot Hydraulic Control
- > PORTS: SAE Flange Code 62
- > Multiple and Auxiliary Pump Options Available
- > R = CW Rotation
- > L = CCW Rotation

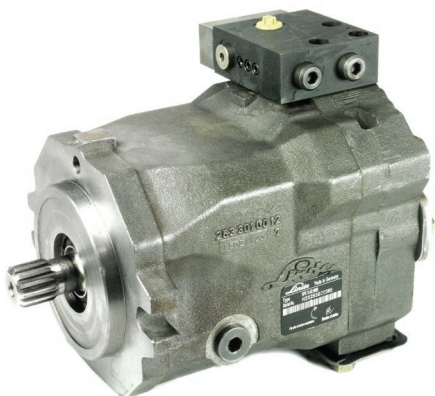


HPV - VARIABLE DISPLACEMENT

MODEL	MAX CC/REV	SHAFT	MOUNT	MAX RPM	MAX PRESSURE BAR Continuous
HPV-55-02	54.8	1" 15T	SAE B	4500	420
HPV-75-02	75.9	1 ⅝" 21T	SAE C	3800	420
HPV-105-02	105.0	1 ½" 23T	SAE C	3500	420
HPV-135-02	135.6	1 ¾" 27T	SAE D	3200	420

SPARE PARTS

MODEL	DESCRIPTION	SIZE
262 320 9902	Seal Kit	55-02
263 320 9912	Seal Kit	75
264 320 9912	Seal Kit	105
265 320 9906	Seal Kit	135
267 320 9900	Seal Kit	210
000 983 0623	Filter Element	35-55
000 983 0615	Filter Element	75 - 135
000 983 0633	Filter Element (High Pressure 35 Bar)	75 - 135



PUMPS

Piston Pump

- > Open Loop Pump
- > CONTROLLERS: Load Sensing with Electronic Override
Load Sensing with Pressure Cut Off
- > PORTS: SAE Flange Code 62
- > Auxiliary Pump Options Available
- > R = CW Rotation
- > L = CCW Rotation

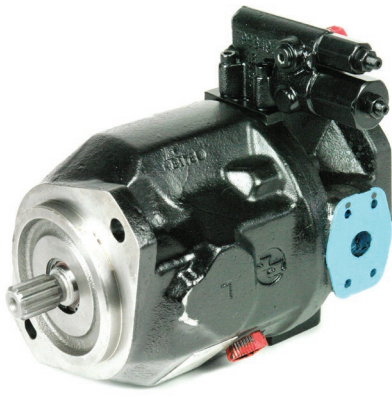


HPR - REGULATED DISPLACEMENT

MODEL	MAX CC/REV	SHAFT	MOUNT	MAX RPM	MAX PRESSURE BAR Continuous
<u>HPR55-02</u>	54.8	1 ¼" 14T	SAE C	2700	420
<u>HPR75-02</u>	75.9	1 ¼" 14T	SAE C	2600	420
<u>HPR105-02</u>	105.0	1 ½" 23T	SAE C	2300	420
<u>HPR135-02</u>	135.6	1 ¾" 27T	SAE D	2300	420

SPARE PARTS

MODEL	DESCRIPTION	SIZE
<u>253 320 9901</u>	Seal Kit	55/75
<u>254 320 9908</u>	Seal Kit	105
<u>255 320 9913</u>	Seal Kit	135



PUMPS

Piston Pump

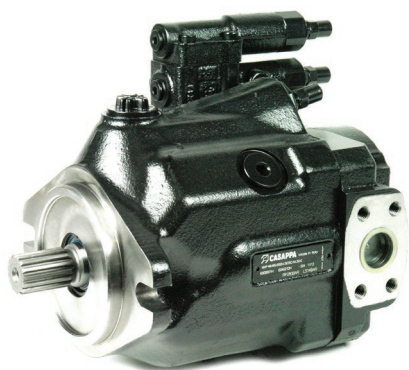
- > Open Loop Pump
- > CONTROLLERS:
 - Pressure Compensator
 - Load Sense
 - Horse Power Controlled
- > PORTS:
 - SAE Flange Code 61
- > Multiple and Auxiliary Pump Options Available
- > R = CW Rotation
- > L = CCW Rotation

GENUINE RE-MANUFACTURED A10V - VARIABLE DISPLACEMENT

MODEL	MAX CC/REV	MAX RPM	MAX PRESSURE BAR Continuous
A10VS018	18	3300	350
A10VS028	28	3000	350
A10VS045	45	2600	350
A10VS071	71	2200	350
A10VS0100	100	2000	350

SPARE PARTS

MODEL	DESCRIPTION	SIZE	SERIES
1018-941171S	Seal Kit - Viton	18	30-32
1028-932983S	Seal Kit - Viton	28	30-32
1045-932984S	Seal Kit - Viton	45	30-32
1071-932985S	Seal Kit - Viton	71	30-32
1100-941168S	Seal Kit - Viton	100	30-32
1140-941170S	Seal Kit - Viton	140	30-32



PUMPS

Piston Pump

- > Open Loop Pump
- > CONTROLLERS: Pressure Compensator
Load Sense
- > PORTS: SAE Flange Code 61
- > Multiple and Auxiliary Pump Options Available
- > R = CW Rotation
- > L = CCW Rotation

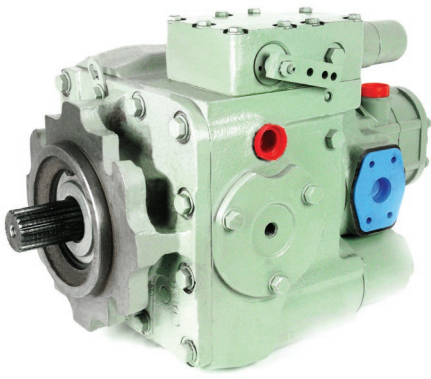


MVP - VARIABLE DISPLACEMENT

MODEL	MAX CC/REV	MAX RPM	MAX PRESSURE BAR Continuous
MVP30.28	34.8	3500	280
MVP48.45	53.7	3000	280
MVP60.60	60.0	3000	280
MVP60.72	72.0	2700	280
MVP60.84	84.7	2300	250

SPARE PARTS

MODEL	DESCRIPTION	SIZE
62082065	Seal Kit	MVP30
62082052	Seal Kit	MVP48
62082057	Seal Kit	MVP60



PUMPS

Piston Pump

- > Closed Loop Pump
- > CONTROLLERS:
 - Manual
 - Pilot Hydraulic Control
 - Electro-Hydraulic
- > PORTS:
 - SAE Flange Code 61
- > Multiple and Auxiliary Pump Options Available
- > R = CW Rotation
- > L = CCW Rotation

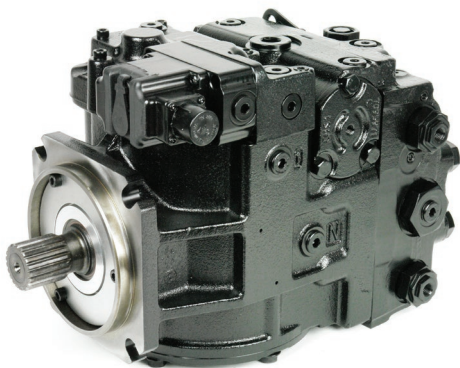


PV20 SERIES - VARIABLE DISPLACEMENT

MODEL	CC/REV	MAX RPM	MAX PRESSURE BAR Continuous
PV20	33	3800	345
PV21	51	3500	345
PV22	69	3200	345
PV23	89	2900	345
PV24	118	2700	345
PV25	165	2400	345
PV26	227	2100	345
PV27	333	1900	345

SPARE PARTS

MODEL	DESCRIPTION	SIZE
9510224	Seal Kit	PV20
9510227	Seal Kit	PV21
9510230	Seal Kit	PV22
9510233	Seal Kit	PV23
9510236	Seal Kit	PV24
9510239	Seal Kit	PV25
9510316	Seal Kit	PV26
9510242	Seal Kit	PV27



PUMPS

Piston Pump



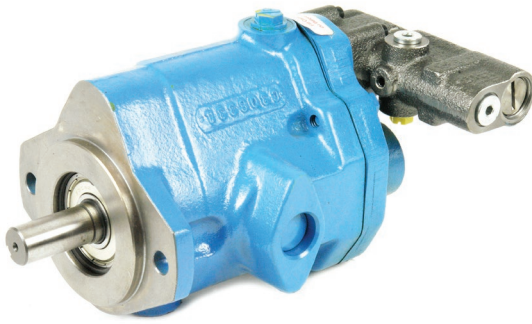
- > Closed Loop Pump
- > CONTROLLERS:
 - Manual
 - Pilot Hydraulic Control
 - Electro-Hydraulic
- > MOUNT:
 - 4 Bolt SAE
- > PORTS:
 - SAE Flange Code 62
- > Multiple and Auxiliary Pump Options Available
- > R = CW Rotation
- > L = CCW Rotation

90 SERIES - VARIABLE DISPLACEMENT

MODEL	CC/REV	MAX RPM	MAX PRESSURE BAR Continuous
90R42	42	4200	420
90R55	55	3900	420
90R75	75	3600	420
90R100	100	3300	420
90R130	130	3100	420
90R180	180	2600	420
90R250	250	2300	420

SPARE PARTS

MODEL	DESCRIPTION	SIZE
80520S30	Seal Kit	42
80020S30	Seal Kit	55
81020S30	Seal Kit	75
82020S30	Seal Kit	100
83020S30	Seal Kit	130
8510062	Seal Kit	180
8510149	Seal Kit	250



PUMPS

Piston Pump



> Open Loop Pump

> CONTROLLERS:

Pressure Compensator
Load Sense

> SHAFT:

5 - 6 - $\frac{3}{4}$ " Straight Keyed
10 - 15 - $\frac{7}{8}$ " Straight Keyed

> PORTS:

UNO

> R = CW Rotation

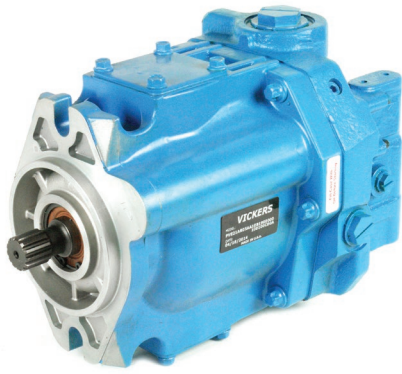
> L = CCW Rotation

PVB - VARIABLE DISPLACEMENT

MODEL	MAX CC/REV	MOUNT	MAX RPM	MAX PRESSURE BAR Continuous
<u>PVB-5</u>	10.5	SAE A	1800	210
<u>PVB-6</u>	13.8	SAE A	1800	140
<u>PVB-10</u>	21	SAE B	1800	210
<u>PVB-15</u>	33	SAE B	1800	140

SPARE PARTS

MODEL	DESCRIPTION	SIZE
<u>919191</u>	Seal Kit	5 - 6
<u>919682</u>	Seal Kit	10 - 15



PUMPS

Piston Pump



> Open Loop Pump

> CONTROLLERS:

Pressure Compensator
Load Sense

> SHAFT:

012 $\frac{7}{8}$ " Straight Keyed
 $\frac{7}{8}$ " x 13T Spline
019 - 021 1" Straight Keyed
 $\frac{7}{8}$ " x 13T Spline
 1" x 15T Spline

> MOUNT:

SAE B

> PORTS:

UNO Threaded

> R = CW Rotation

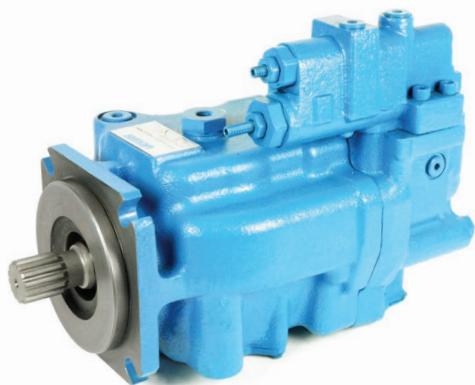
> L = CCW Rotation

PVE - VARIABLE DISPLACEMENT

MODEL	MAX CC/REV	MAX RPM	MAX PRESSURE BAR Continuous
PVE-012	25	3000	210
PVE-019	41	2400	210
PVE-021	45	2400	186

SPARE PARTS

MODEL	DESCRIPTION	SIZE
882955	Seal Kit	12
02-348242	Seal Kit	19 - 21



PUMPS

Piston Pump



> Open Loop Pump

> CONTROLLERS: Pressure Compensator
Load Sense

> SHAFT:

- 57 - 1 1/4" Straight Keyed
 - 1 1/4" x 14T Spline
- 74 - 1 1/2" Straight Keyed
 - 1 1/4" x 14 T Spline
 - 1 1/2" x 17 T Spline
- 98 - 1 1/2" Straight Keyed
 - 1 1/2" x 17 T Spline

> PORTS: Code 61 Flange

> Drive Through Available

> Contact Us for Spare Parts

> R = CW Rotation

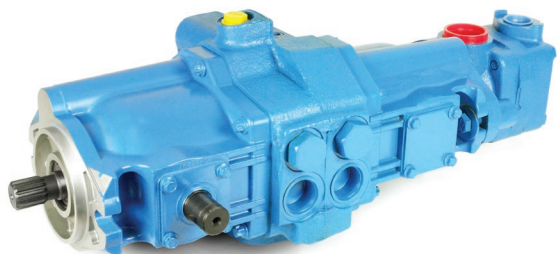
> L = CCW Rotation

PVH - VARIABLE DISPLACEMENT

MODEL	MAX CC/REV	MAX RPM	MAX PRESSURE BAR Continuous
PVH-57	57	2400	280
PVH-74	74	2200	280
PVH-98	98	2100	280

SPARE PARTS

MODEL	DESCRIPTION	SIZE
02-102244	Seal Kit	57
02-102262	Seal Kit	74
02-102264	Seal Kit	98



PUMPS

Piston Pump



- > Closed Loop Tandem Pump
- > CONTROLLERS: Manual Lever
- > SHAFT: 1" x 15T
- > MOUNT: 2 Bolt SAE B
- > SPIGOT: 4"
- > PORTS: UNO
- > AUX PUMP OPTIONS: V10, V20, Tandem Group 2 Alloy Pump
- > * RPM Limited to Auxillary Pump Option

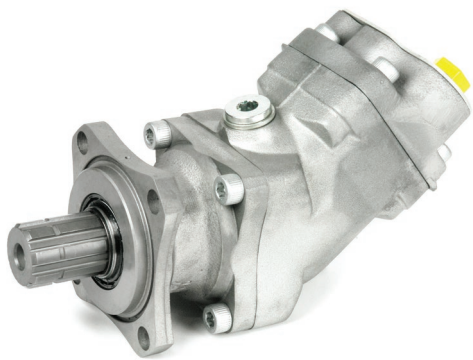
> Contact Us for Spare Parts

> R = CW Rotation

> L = CCW Rotation

TA1919 HYDRA-STATIC TANDEM

MODEL	MAX CC/REV	MAX RPM	MAX PRESSURE BAR Continuous
TA1919	40 x 40	3600*	206



PUMPS

Piston Pump

> SHAFT: 35mm x 8T DIN
 > SPIGOT: 80mm
 > MOUNT: 4 Bolt ISO
 > PORTS: Suction Pipe / BSPP



> R = CW Rotation
 > L = CCW Rotation

SCP DIN - FIXED DISPLACEMENT

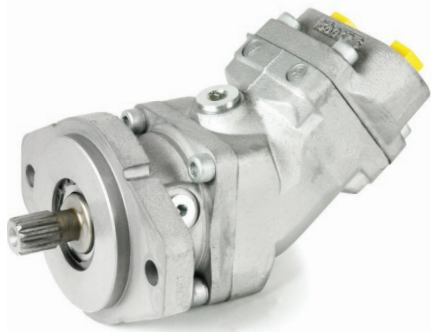
MODEL	CC/REV	MAX RPM	MAX PRESSURE BAR Continuous
SFP-SCP012L	12.6	3000	400
SFP-SCP017L	17.0	3000	400
SFP-SCP025L	25.4	3000	400
SFP-SCP034L	34.2	3000	400
SFP-SCP047L	47.1	2500	400
SFP-SCP056L	56.0	2500	400
SFP-SCP064L	63.6	2500	400
SFP-SCP084L	83.6	2000	400
SFP-SCP108L	108.0	2000	400

ACCESSORIES

MODEL	DESCRIPTION	HOSE SIZE (mm)	PUMP FITTING (mm)	SIZE
SF-18400	Suction Pipe 90°	38	45	012-064
SF-18401	Suction Pipe 90°	50	45	012-064
SF-18403	Suction Pipe 90°	50	58	084-108

SPARE PARTS

MODEL	DESCRIPTION	SIZE
SFSK-50290	Seal Kit	12-34
SFSK-50291	Seal Kit	47-64
SFSK-50292	Seal Kit	84-108



PUMPS

Piston Pump

> MOUNT: 4 Bolt & 2 Bolt SAE
> PORTS: Suction Pipe / BSPP



> R = CW Rotation
> L = CCW Rotation

SCP SAE - FIXED DISPLACEMENT

MODEL	CC/REV	SHAFT	MOUNT	MAX RPM	MAX PRESSURE BAR Continuous
SFP-SCP012L	12.6	7/8" 13T	SAE B	3000	400
SFP-SCP017L	17.0	7/8" 13T	SAE B	3000	400
SFP-SCP025L	25.4	7/8" 13T	SAE B	3000	400
SFP-SCP034L	34.2	7/8" 13T	SAE B	3000	400
SFP-SCP047L	47.1	7/8" 13T	SAE B	2500	400
SFP-SCP056L	56.0	1 1/4" 14T	SAE C	2500	400
SFP-SCP064L	63.6	1 1/4" 14T	SAE C	2500	400
SFP-SCP084L	83.6	1 1/4" 14T	SAE C	2000	400
SFP-SCP108L	108.0	1 1/4" 14T	SAE C	2000	400

ACCESSORIES

MODEL	DESCRIPTION	HOSE SIZE (mm)	PUMP FITTING (mm)	SIZE
SF-18400	Suction Pipe 90°	38	45	012-064
SF-18401	Suction Pipe 90°	50	45	012-064
SF-18403	Suction Pipe 90°	50	58	084-108

SPARE PARTS

MODEL	DESCRIPTION	SIZE
SFSK-50290	Seal Kit	12-34
SFSK-50291	Seal Kit	47-64
SFSK-50292	Seal Kit	84-108



PUMPS

Piston Pump

- > SHAFT: 35mm x 8T DIN
- > SPIGOT: 80mm
- > MOUNT: 4 Bolt ISO
- > PORTS: Suction Pipe / BSPP

- > Full Aluminium Body
- > R = CW Rotation
- > L = CCW Rotation



SAP - FIXED DISPLACEMENT

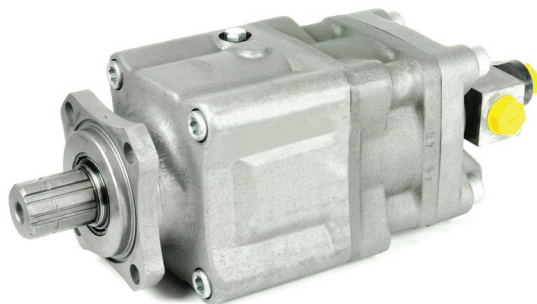
MODEL	CC/REV	MAX RPM	MAX PRESSURE BAR Continuous
SFP-SAP-040	41.2	2500	350
SFP-SAP-047	47.2	2500	350
SFP-SAP-056	56.0	2500	350
SFP-SAP-064	63.6	2500	350

ACCESSORIES

MODEL	DESCRIPTION	HOSE SIZE (mm)	PUMP FITTING (mm)	SIZE
SF-18400	Suction Pipe 90°	38	45	012-064
SF-18401	Suction Pipe 90°	50	45	012-064
SF-18403	Suction Pipe 90°	50	58	084-108

SPARE PARTS

MODEL	DESCRIPTION	SIZE
SFSK-50906	Seal Kit	



PUMPS

Piston Pump

- > SHAFT: 35mm x 8T DIN
- > SPIGOT: 80mm
- > MOUNT: 4 Bolt ISO
- > PORTS: Suction Pipe / BSPP



> Bi-Directional Rotation

SL - DUAL FIXED DISPLACEMENT

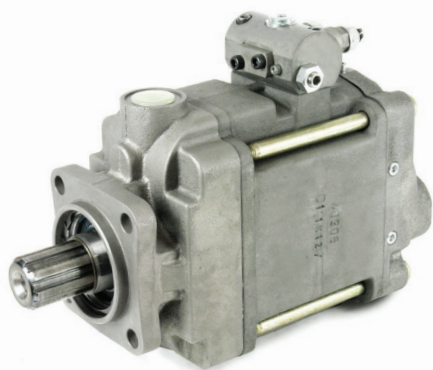
MODEL	CC/REV	MAX RPM	MAX PRESSURE BAR Continuous
SFP-SL20/20	20.3 + 20.3	2200	350
SFP-SL28/28	27.5 + 27.5	1800	350
SFP-SL35/35	33.9 + 33.9	2200	330
SFP-SL40/20	40.7 + 20.3	2200	350
SFP-SL46/46	45.8 + 45.8	1800	330
SFP-SL53/53	52.5 + 52.5	1600	330
SFP-SL56/28	54.9 + 27.5	1800	350
SFP-SL64/32	63.0 + 31.5	1600	350

ACCESSORIES

MODEL	DESCRIPTION	HOSE SIZE (mm)
SF-18394	Suction Pipe 90°	64

SPARE PARTS

MODEL	DESCRIPTION	SIZE
SFSK-50303	Seal Kit	



PUMPS

Piston Pump

- > Open Loop Pump
- > CONTROLLERS: Pressure Compensator
Load Sense
- > SHAFT: 8T x 35mm Spline
- > MOUNT: 4 Bolt ISO
- > SPIGOT: 80mm
- > PORTS: Suction Pipe / BSPP

- > R = CW Rotation
- > L = CCW Rotation



SVH - VARIABLE DISPLACEMENT

MODEL	MAX CC/REV	MAX RPM	MAX PRESSURE BAR Continuous
SFP-SVH092	92	2400	350
SFP-SVH112	112	2200	350

ACCESSORIES

MODEL	DESCRIPTION	HOSE SIZE (mm)
SF-20102	Suction Pipe 45°	50

SPARE PARTS

MODEL	DESCRIPTION	SIZE
SF-92123	Seal Kit	062
SF-91972	Seal Kit	092
SF-91973	Seal Kit	112



PUMPS

Hand Pump

Badestnost
hydraulic components

- > Pumps in both directions
- > Pump includes handle

TANKLESS HAND PUMP

MODEL	DESCRIPTION	CC/REV	MAX PRESSURE BAR Continuous
PRBC 20M	Tankless Hand Pump	20	250



- > Pumps One Direction Only (Tank to be Added)
- > Suitable for S/A Cylinder - Lowering Valve
- > Pump Includes Handle

HAND PUMP (1 WAY)

MODEL	DESCRIPTION	CC/REV	MAX PRESSURE BAR Continuous
PRP12-SG38	Single Acting	12	300



PUMPS

Hand Pump

> Tank to Suit PRP12 Hand Pump

Badestnost
hydraulic components

TANK (1 WAY)

MODEL	DESCRIPTION
-------	-------------

<u>R2/6</u>	Round Tank 2L
-------------	---------------

<u>R3/6</u>	Round Tank 3L
-------------	---------------

<u>R5/6</u>	Round Tank 5L
-------------	---------------



- > Pumps in Both Directions (Tank to be Added)
- > Suitable for S/A Cylinder - Lowering Valve
- > Pump Includes Handle

HAND PUMP (2 WAY S/A)

MODEL	DESCRIPTION	CC/REV	MAX PRESSURE BAR Continuous
-------	-------------	--------	--------------------------------

<u>PRB25/408</u>	Single Acting	25	250
------------------	---------------	----	-----

<u>PRB25/412</u>	Single Acting with R/V	25	250
------------------	------------------------	----	-----



PUMPS

Hand Pump

Badestnost
hydraulic components

- > Pumps in Both Directions (Tank to be Added)
- > Suitable for D/A Cylinder
- > Pump Includes Handle

HAND PUMP (2 WAY D/A)

MODEL	DESCRIPTION	CC/REV	MAX PRESSURE BAR Continuous
PRBD25	Double Acting / Valve / RV	25	250



- > Tank to Suit PRB25/408 and PRB25/412 Hand Pump

TANK (2 WAY)

MODEL	DESCRIPTION
RP3	Square Tank 3L
RP5	Square Tank 5L

