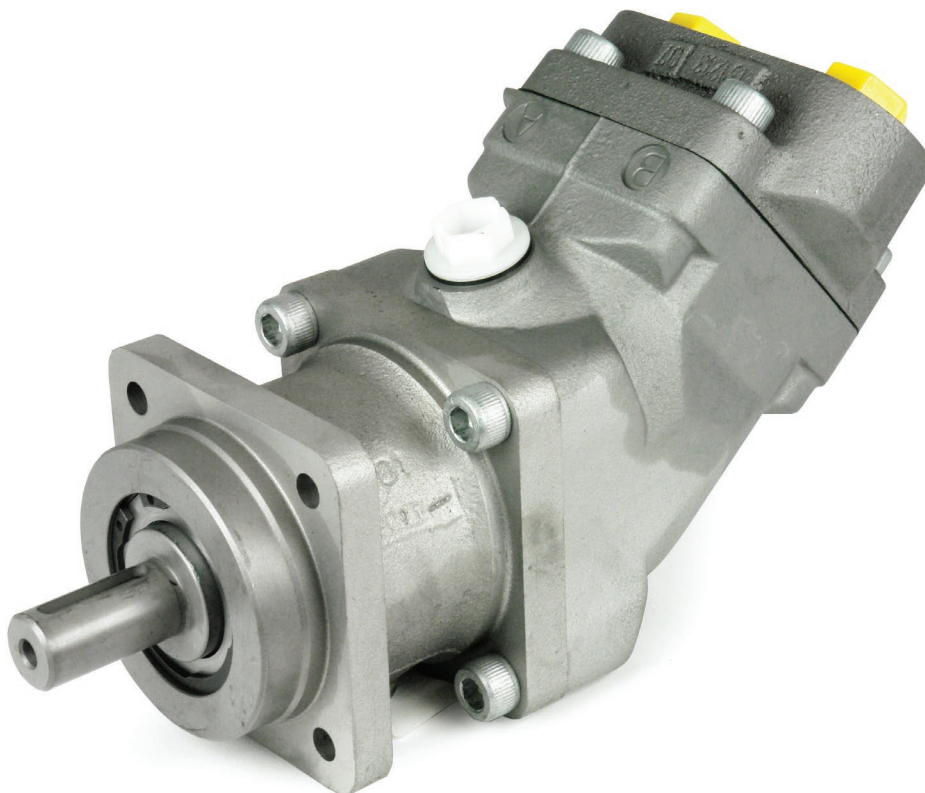


# MOTORS



## DISCLAIMER

- > All performance and specification figures are where possible taken from the latest documentation and may vary from older literature versions.
- > Product photos shown are indicative only. Actual products may differ from that shown.
- > Failure or improper selection or improper use of the products described herein or related items can cause death, personal injury and property damage. Whilst every reasonable effort has been made to ensure that the information contained herein is accurate, no warranty is given that it is free from error or omission. Windust Hydraulic Services Ltd will not accept liability for any injury, loss or damage arising directly or indirectly from any use or reliance on this information.

# MOTORS

## Index

### BRAND

### MODEL

Danfoss	OMM
Danfoss	OMP
Danfoss	OMR
Danfoss	OMH
Danfoss	OMS
Danfoss	OMT
Danfoss	OMV
Marzocchi	Group 2
Eaton Char-Lynn	J Series (129-)
Eaton Char-Lynn	H Series (101-)
Eaton Char-Lynn	T Series (158-)
Eaton Char-Lynn	Delta Series (184-)
Eaton Char-Lynn	2000 Series (104-)
Eaton Char-Lynn	4000 Series (109-, 110-)
Eaton Char-Lynn	6000 Series (112-, 113-, 114-)
Eaton Char-Lynn	10,000 Series (119-, 120-, 121-)
Permco	M124 Bush
Permco	M197 Bush
Permco	M257 Bush
Permco	M360 Bush
Permco	M2100 Bearing
Permco	M3100 Bearing
Permco	M5100 Bearing
Permco	M7600 Bearing
Ronzio	Group 2 Euro
Ronzio	Group 2 SAE
Ronzio	Group 2 German PCD
Ronzio	Group 2 German D3 PCD
Ronzio	Group 2 German M3 PCD
Staffa	Radial Piston Motor
Linde	HMF - Fixed Displacement
Linde	HMV - Variable Displacement

**BRAND****MODEL**

Sauer Danfoss MF 20 Series - Fixed Displacement

Sauer Danfoss 90 Series - Fixed Displacement

Sunfab SFM ISO

Sunfab SFM SAE

STF OMZR Series

STF OMZS Series

STF OMZT Series

Veljan VM4SE



# MOTORS

## Geroter

- > MOUNT: 2 Bolt SAE AA
- > OUTPUT SHAFT OPTIONS:  $\frac{5}{8}$ " Straight Keyed  
16mm Straight Keyed  
9T Spline
- > DRAIN OPTION:  $\frac{1}{8}$ " BSPP Rear

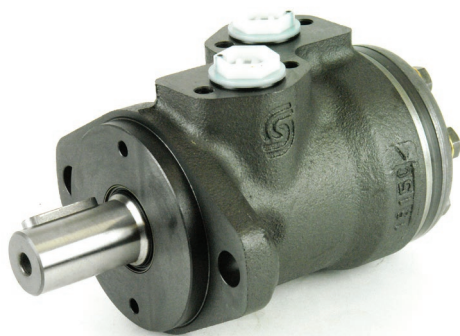


## OMM SERIES

CC/REV	MAX RPM	MAX PRESSURE BAR Continuous
8	2450	200
12.5	2000	200
20	1250	200
32	800	158

## SPARE PARTS

MODEL	DESCRIPTION	SERIES	SEAL O.D (mm)
<b>151G0202</b>	Seal Kit	1,2,3	28.2



# MOTORS

## Geroter

- > MOUNT: 2 Bolt SAE A
- > OUTPUT SHAFT OPTIONS: 25mm Straight Keyed  
1" x 6T Spline
- > DRAIN OPTION: ¼" BSPP Rear



## OMP SERIES

CC/REV

MAX RPM

MAX PRESSURE BAR  
Continuous

32	1720	100
40	1750	100
50	1540	140
80	960	140
100	770	140
125	600	140
160	480	140
200	385	115
250	310	90
315	245	75
400	190	60

## SPARE PARTS

MODEL

DESCRIPTION

SERIES

SEAL O.D (mm)

<a href="#">151-1154</a>	Seal Kit	4,5,6	48
<a href="#">151-1177</a>	Seal Kit	5,6	42
<a href="#">151-1275</a>	Seal Kit	7	42
<a href="#">151-1279</a>	Seal Kit	7	39
<a href="#">151-1286</a>	Seal Kit	8	39
<a href="#">151-1179</a>	Seal Kit	7	48



# MOTORS

## Geroler

- > MOUNT: 2 Bolt SAE A  
> OUTPUT SHAFT OPTIONS: 25mm Straight Keyed  
1" x 6 T Spline  
> DRAIN OPTION: ¼" BSPP rear



## OMR SERIES

CC/REV

MAX RPM

MAX PRESSURE BAR  
Continuous

50	970	140
80	940	175
100	750	175
125	600	175
160	470	130
200	375	110
250	300	80
315	240	70
375	200	55

## SPARE PARTS

MODEL

DESCRIPTION

SERIES

SEAL O.D (mm)

<a href="#">151-1159</a>	Seal Kit	2,3,4	48
<a href="#">151-1178</a>	Seal Kit	4	42
<a href="#">151-1277</a>	Seal Kit	5	42
<a href="#">151-1286</a>	Seal Kit	6	39
<a href="#">151-1166</a>	Seal Kit	5	48



# MOTORS

## Geroler

- > MOUNT: 4 Bolt Magneto
- > OUTPUT SHAFT OPTIONS: 32mm Straight Keyed  
35mm Straight Keyed  
1 1/4" x 14 T Spline
- > DRAIN OPTION: 1/4" BSPP rear



## OMH SERIES

CC/REV	MAX RPM	MAX PRESSURE BAR Continuous
200	445	175
250	350	175
315	285	135
400	225	105
500	190	85

## SPARE PARTS

MODEL	DESCRIPTION	SERIES	SEAL O.D (mm)
151H1100	Seal Kit	1	48
OMH HP SEAL	High Pressure Shaft Seal	1	



# MOTORS

## Disc Valve

- > MOUNT: 4 Bolt SAE A
- > OUTPUT SHAFT OPTIONS: 32mm Straight Keyed  
1 1/4" x 14 T Spline
- > DRAIN OPTION: 1/4" BSPP side



## OMS SERIES

CC/REV

MAX RPM

MAX PRESSURE BAR  
Continuous

80	1000	124
100	900	124
125	720	124
160	560	124
200	450	124
250	360	124
315	285	117
400	230	114

## SPARE PARTS

MODEL

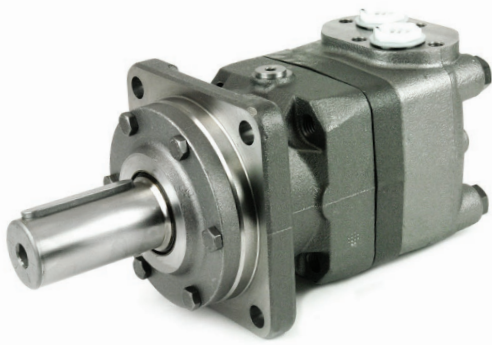
DESCRIPTION

SERIES

SEAL O.D (mm)

151F0111	Seal Kit	1,2,3	52
----------	----------	-------	----





# MOTORS

## Disc Valve

- > MOUNT: 4 Bolt ISO 125
- > OUTPUT SHAFT OPTIONS: 40mm Straight Keyed  
1 ½" x 17 T Spline
- > DRAIN OPTION: ¼" BSPP side



## OMT SERIES

CC/REV

MAX RPM

MAX PRESSURE BAR  
Continuous

160	780	262
200	750	262
250	600	262
315	460	262
400	365	227
500	285	206

## SPARE PARTS

MODEL

DESCRIPTION

SERIES

SEAL O.D (mm)

<b>151B0113</b>	Seal Kit	1,2	65
<b>151B0161</b>	Heavy Duty Seal Kit	2	65



# MOTORS

## Disc Valve



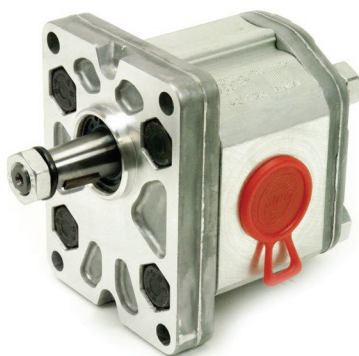
- > MOUNT: 4 Bolt ISO 160
- > OUTPUT SHAFT OPTIONS: 50mm Straight Keyed  
2 1/8" x 16 T Spline
- > DRAIN OPTION: 1/4" BSPP side

## OMV SERIES

CC/REV	MAX RPM	MAX PRESSURE BAR Continuous
315	630	262
400	600	262
500	480	262
630	380	262
800	300	206

## SPARE PARTS

MODEL	DESCRIPTION	SERIES	SEAL O.D (mm)
<a href="#">151B0129</a>	Seal Kit	1,2	80
<a href="#">151B0162</a>	Seal Kit - Heavy Duty	2	80



# MOTORS

## Gear Motor

- > SPIGOT: 36.5mm
- > MOUNT: 4 Bolt 96mm x 71.5mm
- > PORTS: PCD 40 x 40
- > OUTPUT SHAFT OPTIONS: 1.8 Taper 150 Nm  
4mm Key
- > DRAIN OPTION: 1/4" BSPP



> [Bi-Directional Rotation](#)

## GROUP 2

MODEL	CC/REV	MAX RPM	MAX PRESSURE BAR Continuous
<a href="#">ALM2R13E1</a>	9.6	3000	250
<a href="#">ALM2R16E1</a>	11.5	4000	230
<a href="#">ALM2R20E1</a>	14.1	4000	230
<a href="#">ALM2R22E1</a>	16.0	4000	210
<a href="#">ALM2R25E1</a>	17.9	3600	210
<a href="#">ALM2R30E1</a>	21.1	3200	180
<a href="#">ALM2R34E1</a>	23.7	3000	180
<a href="#">ALM2R40E1</a>	28.2	2500	170

## SPARE PARTS

MODEL	DESCRIPTION
<a href="#">650230</a>	Seal Kit



# MOTORS

## Geroler

**EATON** | Char-Lynn

- > MOUNT: 5 Bolt Imperial and 5 Bolt Metric  
> OUTPUT SHAFT OPTIONS:  $\frac{5}{8}$ " Straight Keyed  
16mm Straight Keyed  
9 T Spline

## J SERIES (129-)

CC/REV	MAX RPM	MAX PRESSURE BAR Continuous
8.2	1992	140
12.9	1575	140
19.8	1043	140
31.6	650	121
50	393	97

## SPARE PARTS

MODEL	DESCRIPTION
60580-000	Seal Kit



# MOTORS

## Gerotor

**EATON** | Char-Lynn

- > MOUNT: 2 Bolt SAE A and 4 Bolt Square
- > OUTPUT SHAFT OPTIONS:
  - 1" Straight Keyed
  - 25mm Straight Keyed
  - 1" x 6B Shaft
  - 1" Corrosive Resistant
  - 25mm Corrosive Resistant
  - 1" Tapered
  - 13T Spline

> Case Drain Option Available on Request

## H SERIES (101-)

CC/REV

MAX RPM

MAX PRESSURE BAR  
Continuous

36	1021	124
46	969	124
59	953	124
74	760	124
97	585	124
120	469	124
146	385	117
159	353	114
185	304	110
231	243	100
293	192	93
370	152	86

## SPARE PARTS

MODEL

DESCRIPTION

60540-000

Seal Kit 008/009



# MOTORS

## Geroler

**EAT•N** | Char-Lynn

- > MOUNT: 2 Bolt SAE A and 4 Bolt Square
- > OUTPUT SHAFT OPTIONS:
  - 1" Straight Keyed
  - 25mm Straight Keyed
  - 1" x 6B Shaft
  - 1" Corrosive Resistant
  - 25mm Corrosive Resistant
  - 1" Tapered
  - 13T Spline

> Case Drain Option Available on Request

## T SERIES (158-)

CC/REV	MAX RPM	MAX PRESSURE BAR Continuous
36	1021	155
49	906	155
66	849	155
80	694	155
102	550	155
131	426	138
157	355	138
195	287	138
244	229	127
306	183	110
370	152	90

## SPARE PARTS

MODEL	DESCRIPTION
60564-000	Seal Kit 008/009



# MOTORS

## Disc Valve

**EATON** | Char-Lynn

> MOUNT:

Wheel Mount

> OUTPUT SHAFT OPTIONS:

6 Bolt Magneto

1 ½" Straight Keyed

1 ¼" Tapered

1 ¼" 14T Spline

1 ¼" Straight Keyed

32mm Straight Keyed

1" Straight Keyed

## DELTA SERIES (184-)

CC/REV

MAX RPM

MAX PRESSURE BAR  
Continuous

113	668	205
146	519	205
198	382	205
243	323	205
252	300	205
300	252	205
347	218	205
395	192	190
470	161	170
542	140	140
649	117	120
754	100	105

## SPARE PARTS

MODEL

DESCRIPTION

**9900436-000**

Seal Kit



# MOTORS

## Disc Valve

**EATON** | Char-Lynn

> MOUNT:

- 4 Bolt Wheel Mount
- 2 Bolt SAE
- Bearing-less
- 4 Bolt
- 4 Bolt Magneto

> OUTPUT SHAFT OPTIONS:

- Bearing-less
- 1" Straight Keyed
- 1 1/4" Straight Keyed
- 1 1/4" Tapered
- 1 1/4" 14T Spline
- 1" 6B Spline
- 32mm Straight Keyed
- 25mm Straight Keyed

> Case Drain Option Available on Request

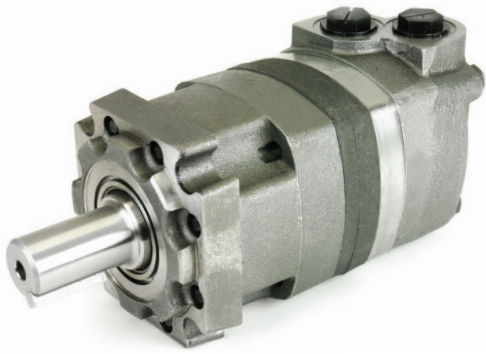
## 2000 SERIES (104-)

CC/REV	MAX RPM	MAX PRESSURE BAR Continuous
80	908	205
100	742	205
130	576	205
160	477	205
195	385	205
245	308	205
305	246	205
395	191	155
490	153	120

## SPARE PARTS

MODEL	DESCRIPTION
61252-000	Seal Kit 003 to 005
61258-000	Seal Kit 006





# MOTORS

## Disc Valve

**EATON** | Char-Lynn

> MOUNT:      4 Bolt Bearing-less  
                   4 Bolt Standard  
                   4 Bolt Wheel  
                   4 Bolt SAE C

> OUTPUT SHAFT OPTIONS:      Bearing-less  
    1 1/4" Straight Keyed  
    1 5/8" Tapered  
    1 1/4" 14T Spline  
    40mm Straight Keyed

> Case Drain Option Available on Request

## 4000 SERIES (109-,110-)

CC/REV

MAX RPM

MAX PRESSURE BAR  
Continuous

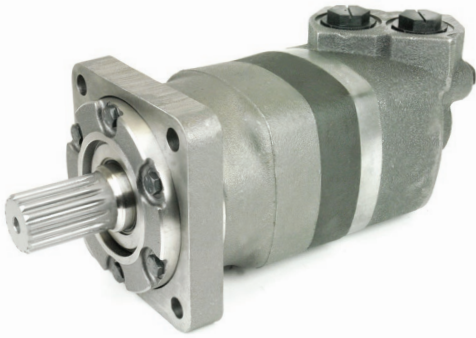
110	697	205
130	722	205
160	582	205
205	459	205
245	383	205
280	336	205
310	303	205
395	239	185
495	191	140
625	151	115

## SPARE PARTS

MODEL

DESCRIPTION

61234-000	Seal Kit (Rear) 004
61236-000	Seal Kit (Shaft) 004
61234-000	Seal Kit (Rear) 006
61281-000	Seal Kit (Shaft) 006



# MOTORS

## Disc Valve

**EATON** | Char-Lynn

> MOUNT:

- 4 Bolt Bearing-less
- 2 Bolt Standard SAE CC
- 4 Bolt Wheel
- 4 Bolt Global

> OUTPUT SHAFT OPTIONS:

- Bearing-less
- 1 1/4" Straight Keyed
- 1 3/8" Tapered
- 1 1/4" 14T Spline
- 40mm Straight Keyed

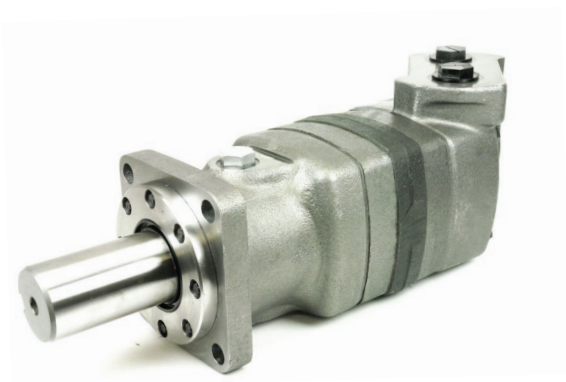
> Case Drain Option Available on Request

## 6000 SERIES (112-,113-,114-)

CC/REV	MAX RPM	MAX PRESSURE BAR Continuous
195	775	205
245	615	205
310	485	205
390	387	205
490	307	205
625	241	140
985	153	140

## SPARE PARTS

MODEL	DESCRIPTION
<b>61237-000</b>	Seal Kit (Shaft) 005 / 006
<b>61238-000</b>	Seal Kit (Rear) 005 / 006



# MOTORS

## Disc Valve

**EATON** | Char-Lynn

> MOUNT:      4 Bolt Standard  
                  4 Bolt Wheel  
                  Bearing-less

> OUTPUT SHAFT OPTIONS:      Bearing-less  
  2 1/4" Straight Keyed  
  2 1/4" Tapered  
  2 1/8" 16T Spline

> Case Drain Option Available on Request

## 10,000 SERIES (119-,120-,121-)

CC/REV

MAX RPM

MAX PRESSURE BAR  
Continuous

345

501

205

480

354

205

665

254

205

940

179

190

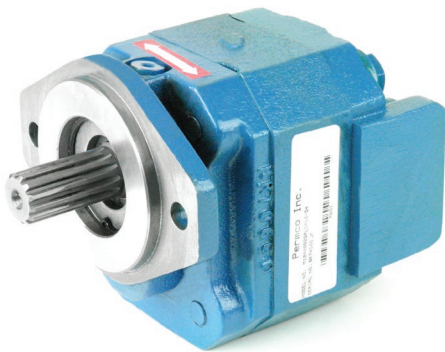
## SPARE PARTS

MODEL

DESCRIPTION

**6406-000**      Seal Kit (Shaft) 002 / 003 / 004

**6405-000**      Seal Kit (Rear) 002 / 003 / 004



# MOTORS

## Bush



### > STANDARD SHAFTS:

7/8" 13T  
 5/8" 9T  
 3/4" 11T  
 5/8" Keyed  
 3/4" Keyed  
 7/8" Keyed

### > STANDARD MOUNTS:

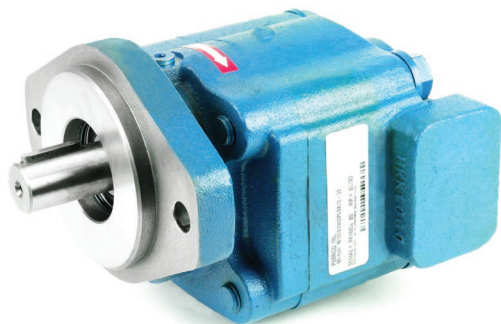
2 Bolt SAE A  
 2 Bolt SAE B

## M124 BUSH

CC/REV	MAX PRESSURE BAR Continuous	GEAR WIDTH	MAX RPM
10.2	240	1/2"	3000
15.2	240	3/4"	3000
20.3	240	1"	3000
25.4	240	1 1/4"	3000
30.5	220	1 1/2"	3000
35.6	200	1 3/4"	3000
40.6	170	2"	3000

## SPARE PARTS

MODEL	DESCRIPTION
<b>M124-S</b>	Seal Kit



# MOTORS

## Bush



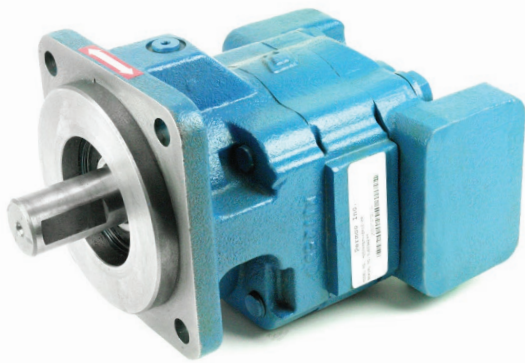
- > STANDARD SHAFTS:
  - 1" Keyed
  - $\frac{7}{8}$ " 13T
  - 1" x 15T
- > STANDARD MOUNTS:
  - 2 Bolt SAE A
  - 2 Bolt SAE B
  - 4 Bolt SAE B
  - 4 Bolt SAE C
- > 'C' SHAFTS:
  - $\frac{7}{8}$ " Keyed
  - 1  $\frac{1}{4}$ " Keyed
  - 1  $\frac{1}{4}$ " 14T

## M197 BUSH

CC/REV	MAX PRESSURE BAR Continuous	GEAR WIDTH	MAX RPM
16.5	240	$\frac{1}{2}$ "	3000
24.3	240	$\frac{3}{4}$ "	3000
32.3	240	1"	3000
40.4	240	1 $\frac{1}{4}$ "	3000
48.4	240	1 $\frac{1}{2}$ "	3000
56.5	220	1 $\frac{3}{4}$ "	3000
64.4	200	2"	3000

## SPARE PARTS

MODEL	DESCRIPTION
M197-S	Seal Kit



# MOTORS

## Bush



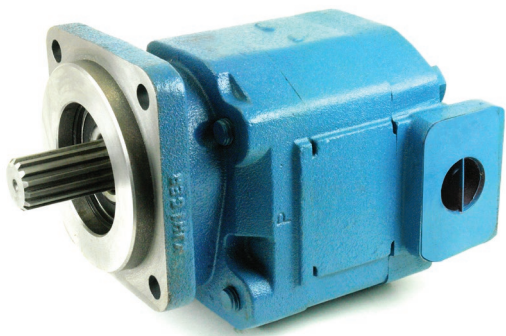
- > STANDARD SHAFTS:
  - 1 ¼" Keyed
  - 1 ¼" 14T
  - ⅞" x 13T
- > STANDARD MOUNTS:
  - 2 Bolt SAE B
  - 2 Bolt SAE C
  - 4 Bolt SAE B
  - 4 Bolt SAE C
- > 'C' SHAFTS:
  - 1" 15T

## M257 BUSH

CC/REV	MAX PRESSURE BAR Continuous	GEAR WIDTH	MAX RPM
31.3	240	¾"	2400
41.8	240	1"	2400
52.2	240	1 ¼"	2400
62.7	240	1 ½"	2400
73.1	220	1 ¾"	2400
83.6	200	2"	2400
94.0	190	2 ¼"	2400
104.5	170	2 ½"	2400

## SPARE PARTS

MODEL	DESCRIPTION
M257-S	Seal Kit



# MOTORS

## Bush



- > STANDARD SHAFTS: 1 1/4" Keyed  
1 1/4" 14T
- > STANDARD MOUNTS: 2 Bolt SAE C  
4 Bolt SAE B  
4 Bolt SAE C
- > 'C' SHAFTS: 1 1/2" 17T

## M360 BUSH

CC/REV

MAX PRESSURE BAR  
Continuous

GEAR WIDTH

MAX RPM

44.3	240	3/4"	2400
59.0	240	1"	2400
73.8	240	1 1/4"	2400
88.5	240	1 1/2"	2400
103.5	240	1 3/4"	2400
118.0	240	2"	2400
132.8	220	2 1/4"	2400
147.5	200	2 1/2"	2400

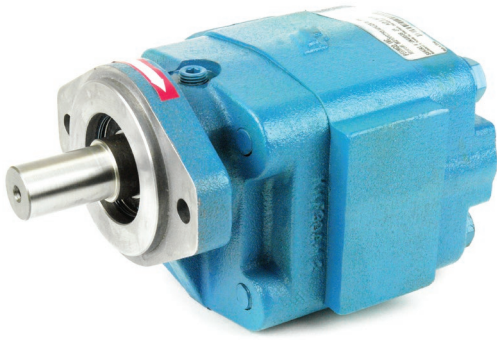
## SPARE PARTS

MODEL

DESCRIPTION

**M360-S**

Seal Kit



# MOTORS

## Bearing



- > STANDARD SHAFTS:
- $\frac{7}{8}$ " 13T
  - 1" Keyed
  - $\frac{7}{8}$ " Keyed
- > STANDARD MOUNTS:
- 2 Bolt SAE A
  - 2 Bolt SAE B
  - 2 Bolt SAE B-Short
  - 4 Bolt SAE B
  - 6 Bolt Round
  - Chelsea Clover

> Contact us for the full range of 'C' Shaft Options

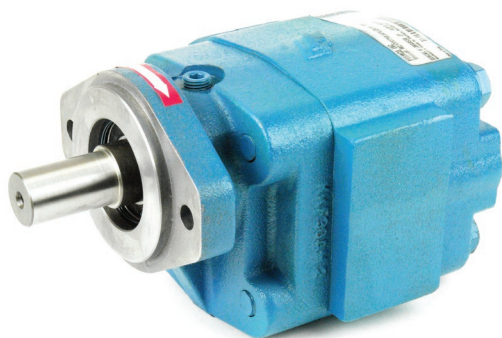
## M2100 ROLLER BEARING

CC/REV	MAX PRESSURE BAR Continuous	GEAR WIDTH	MAX RPM
16.1	205	$\frac{1}{2}$ "	2400
32.2	205	$\frac{3}{4}$ "	2400
32.2	205	1"	2400
40.4	205	1 $\frac{1}{4}$ "	2400
48.4	205	1 $\frac{1}{2}$ "	2400
56.5	170	1 $\frac{3}{4}$ "	2400
64.6	170	2"	2400

## SPARE PARTS

MODEL	DESCRIPTION
<b>M2100-S</b>	Seal Kit





# MOTORS

## Bearing



### > STANDARD SHAFTS:

7/8" Keyed

1" Keyed

5/8" 9T

7/8" 13T

### > STANDARD MOUNTS:

2 Bolt SAE A

2 Bolt SAE B

4 Bolt SAE B

4 Bolt SAE C

6 Bolt Round

> Contact us for the full range of 'C' Shaft Options

## M3100 ROLLER BEARING

CC/REV

MAX PRESSURE BAR  
Continuous

GEAR WIDTH

MAX RPM

16.2	205	1/2"	2400
24.2	205	3/4"	2400
32.3	205	1"	2400
40.4	205	1 1/4"	2400
48.4	205	1 1/2"	2400
56.5	170	1 3/4"	2400
64.6	170	2"	2400

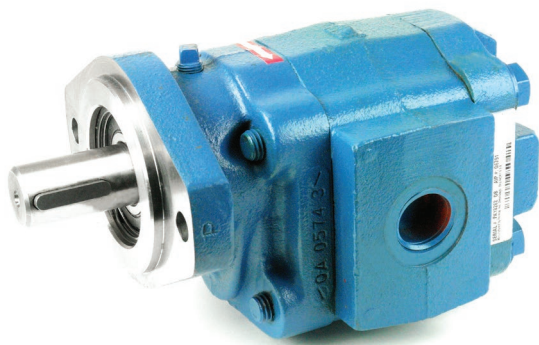
## SPARE PARTS

MODEL

DESCRIPTION

M3000-S

Seal Kit



# MOTORS

## Bearing



- > STANDARD SHAFTS:
  - 1 ¼" Keyed
  - 7/8" 13T
  - 1 ¼" 14T
- > STANDARD MOUNTS:
  - 2 Bolt SAE B
  - 2 Bolt SAE C
  - 4 Bolt SAE B
  - 4 Bolt SAE C
  - 6 Bolt Round
- > 'C' SHAFTS:
  - 1" Keyed
  - 1 ½" Keyed
  - 1" 6T
  - 1" 15T

## M5100 ROLLER BEARING

CC/REV	MAX PRESSURE BAR Continuous	GEAR WIDTH	MAX RPM
20.9	205	½"	2400
31.3	205	¾"	2400
41.8	205	1"	2400
52.2	205	1 ¼"	2400
62.7	205	1 ½"	2400
73.1	170	1 ¾"	2400
83.6	170	2"	2400
94.0	153	2 ¼"	2400
104.5	153	2 ½"	2400

## SPARE PARTS

MODEL	DESCRIPTION
M5000-S	Seal Kit

# MOTORS

## Bearing



- > STANDARD SHAFTS:
  - 1 1/4" 14T
  - 1 1/4" Keyed
- > STANDARD MOUNTS:
  - 2 Bolt SAE C
  - 4 Bolt SAE B
  - 4 Bolt SAE C
- > 'C' SHAFTS:
  - 1 1/4" Keyed
  - 1 3/4" 13T
  - KOMATSU 19T

## M7600 ROLLER BEARING

CC/REV

MAX PRESSURE BAR  
Continuous

GEAR WIDTH

MAX RPM

50.4	205	3/4"	2400
67.2	205	1"	2400
84.0	205	1 1/4"	2400
100.8	205	1 1/2"	2400
117.6	205	1 3/4"	2400
134.4	205	2"	2400
151.2	170	2 1/4"	2400
167.8	170	2 1/2"	2400
184.8	153	2 3/4"	2400
201.6	153	3"	2400

## SPARE PARTS

MODEL

DESCRIPTION

**M7500-S**

Seal Kit



# MOTORS

## Aluminium Gear



> SHAFT:	1.8 taper	
> SPIGOT:	36.5mm	
> MOUNT:	Euro 4 Bolt 96 x 71.55mm	
> PORTS:	PCD Port Sizes 4 - 8	30 x 40
	11 - 13	40 x 30

- > BSPP Ports Available
- > Alloy Body with Cast Iron Ends
- > D = CW Rotation
- > S = CCW Rotation
- > R = Bi-Directional

## GROUP 2 EURO

MODEL	CC/REV	MAX RPM	MAX PRESSURE BAR	
			Continuous	Peak
<a href="#">02ZAG04C032TD</a>	4.4	4500	300	360
<a href="#">02ZAG06C032TD</a>	6.28	4500	300	360
<a href="#">02ZAG08C032TD</a>	8.16	3700	300	360
<a href="#">02ZAG11C033TD</a>	11.3	3300	300	360
<a href="#">02ZAG14C033TD</a>	14.45	2700	300	360
<a href="#">02ZAG17C033TD</a>	16.95	2500	270	330
<a href="#">02ZAG20C033TD</a>	20.1	2500	230	290
<a href="#">02ZAG25C033TD</a>	25.75	2500	180	230
<a href="#">02ZAG31C033TD</a>	31.4	2200	160	200

## SPARE PARTS

MODEL	DESCRIPTION
<a href="#">02ZM-S</a>	Seal Kit
<a href="#">02ZM-S-V</a>	Seal Kit Viton
<a href="#">MIM30187A</a>	Shaft Seal
<a href="#">MIM30197A</a>	Shaft Seal for 3/4" 11T x 17mm 10T Shafts
<a href="#">RO31006</a>	Seal Retainer for 3/4" 11T x 17mm 10T Shafts



# MOTORS

## Aluminium Gear



- > SHAFT:  $\frac{5}{8}$ " Keyed or  $\frac{5}{8}$ " Spline
- > SPIGOT: 3  $\frac{1}{4}$ "
- > MOUNT: 2 Bolt SAE A
- > PORTS: UNO Port Sizes 4 - 11  $\frac{7}{8}$ " x  $\frac{7}{8}$ " UNO  
14 - 31 1  $\frac{1}{16}$ " x  $\frac{1}{8}$ " UNO

- > Alloy Body with Cast Iron Ends
- > D = CW Rotation
- > S = CCW Rotation
- > R = Bi-Directional

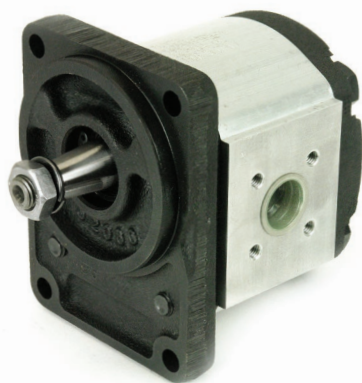
## GROUP 2 SAE

MODEL	CC/REV	MAX RPM	MAX PRESSURE BAR	
			Continuous	Peak
02ZCG04L437D	4.4	4500	300	360
02ZCG06L437D	6.28	4500	300	360
02ZCG08L437D	8.16	3700	300	360
02ZCG11L437D	11.3	3300	300	360
02ZCG14L438D	14.45	2700	300	360
02ZCG17L438D	16.95	2500	270	330
02ZCG20L438D	20.1	2500	230	290
02ZCG25L438D	25.75	2500	180	230
02ZCG31L438D	31.4	2200	160	200

> MODEL CODES REFER TO KEYED SHAFTS

## SPARE PARTS

MODEL	DESCRIPTION
02ZM-S	Seal Kit
02ZM-S-V	Seal Kit Viton
MIM30187A	Shaft Seal
MIM30197A	Shaft Seal for $\frac{3}{4}$ " 11T x 17mm 10T Shafts
RO31006	Seal Retainer for $\frac{3}{4}$ " 11T x 17mm 10T Shafts



# MOTORS

## Aluminium Gear



- > SHAFT: 1.5 Taper or 9T DIN Spline
- > SPIGOT: 80mm
- > MOUNT: 4 Bolt German 100 x 72mm
- > PORTS: PCD 40 x 35

- > Alloy Body with Cast Iron Ends
- > D = CW Rotation
- > S = CCW Rotation
- > R = Bi-Directional

## GROUP 2

### 4 BOLT GERMAN PCD

MODEL	CC/REV	MAX RPM	MAX PRESSURE BAR	
			Continuous	Peak
<a href="#">02ZBG04A136TD</a>	4.4	4500	300	360
<a href="#">02ZBG06A136TD</a>	6.28	4500	300	360
<a href="#">02ZBG08A136TD</a>	8.16	3700	300	360
<a href="#">02ZBG11A136TD</a>	11.3	3300	300	360
<a href="#">02ZBG14A136TD</a>	14.45	2700	300	360
<a href="#">02ZBG17A136TD</a>	16.95	2500	270	330
<a href="#">02ZBG20A136TD</a>	20.1	2500	230	290
<a href="#">02ZBG25A136TD</a>	25.75	2500	180	230
<a href="#">02ZBG31A136TD</a>	31.4	2200	160	200

> MODEL CODES REFER TO 1:5 TAPER

## SPARE PARTS

MODEL	DESCRIPTION
<a href="#">02ZM-S</a>	Seal Kit
<a href="#">02ZM-S-V</a>	Seal Kit Viton
<a href="#">MIM30187A</a>	Shaft Seal
<a href="#">MIM30197A</a>	Shaft Seal for 3/4" 11T x 17mm 10T Shafts
<a href="#">RO31006</a>	Seal Retainer for 3/4" 11T x 17mm 10T Shafts



# MOTORS

## Aluminium Gear



- > SHAFT: 1.5 taper or 9T DIN Spline
- > SPIGOT: 50mm
- > MOUNT: 2 Bolt German 60 x 60
- > MOUNTING HOLES: 5 o'clock / 11 o'clock
- > PORTS: PCD 40 x 35

- > Alloy Body with Cast Iron Ends
- > D = CW Rotation
- > S = CCW Rotation
- > R = Bi-Directional

## GROUP 2

### 2 BOLT GERMAN D3 PCD

MODEL	CC/REV	MAX RPM	MAX PRESSURE BAR	
			Continuous	Peak
<a href="#">02ZDG04A336TD</a>	4.4	4500	300	360
<a href="#">02ZDG06A336TD</a>	6.28	4500	300	360
<a href="#">02ZDG08A336TD</a>	8.16	3700	300	360
<a href="#">02ZDG11A336TD</a>	11.3	3300	300	360
<a href="#">02ZDG14A336TD</a>	14.45	2700	300	360
<a href="#">02ZDG17A336TD</a>	16.95	2500	270	330
<a href="#">02ZDG20A336TD</a>	20.1	2500	230	290
<a href="#">02ZDG25A336TD</a>	25.75	2500	180	230
<a href="#">02ZDG31A336TD</a>	31.4	2200	160	200

> MODEL CODES REFER TO 1:5 TAPER

## SPARE PARTS

MODEL	DESCRIPTION
<a href="#">02ZM-S</a>	Seal Kit
<a href="#">02ZM-S-V</a>	Seal Kit Viton
<a href="#">MIM30187A</a>	Shaft Seal
<a href="#">MIM30197A</a>	Shaft Seal for 3/4" 11T x 17mm 10T Shafts
<a href="#">RO31006</a>	Seal Retainer for 3/4" 11T x 17mm 10T Shafts



# MOTORS

## Aluminium Gear



- > SHAFT: 1.5 Taper or 9T DIN Spline
- > SPIGOT: 50mm
- > MOUNT: 2 Bolt German 60 x 60
- > MOUNTING HOLES: 1 o'clock / 7 o'clock
- > PORTS: PCD 40 x 35

> Alloy Body with Cast Iron Ends

- > D = CW Rotation
- > S = CCW Rotation
- > R = Bi-Directional

## GROUP 2

### 2 BOLT GERMAN M3 PCD

MODEL	CC/REV	MAX RPM	MAX PRESSURE BAR	
			Continuous	Peak
<a href="#">02ZMMG04A336TD</a>	4.4	4500	300	360
<a href="#">02ZMMG06A336TD</a>	6.28	4500	300	360
<a href="#">02ZMMG08A336TD</a>	8.16	3700	300	360
<a href="#">02ZMMG11A336TD</a>	11.3	3300	300	360
<a href="#">02ZMMG14A336TD</a>	14.45	2700	300	360

> MODEL CODES REFER TO 1:5 TAPER

## SPARE PARTS

MODEL	DESCRIPTION
<a href="#">02ZM-S</a>	Seal Kit
<a href="#">02ZM-S-V</a>	Seal Kit Viton
<a href="#">MIM30187A</a>	Shaft Seal
<a href="#">MIM30197A</a>	Shaft Seal for 3/4" 11T x 17mm 10T Shafts
<a href="#">RO31006</a>	Seal Retainer for 3/4" 11T x 17mm 10T Shafts





# MOTORS

## Radial Piston

### Staffa

## RADIAL PISTON MOTOR

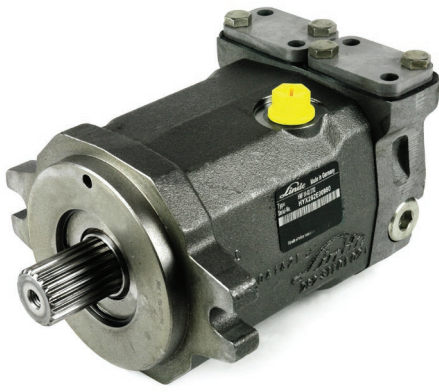
MODEL	CC/REV	AVE RUNNING TORQUE (Nm/Bar)	MAX RPM	MAX CONT OUTPUT (Kw)	MAX PRESSURE BAR	
					Continuous	Intermittent
<a href="#">HMB010</a>	188	2.79	500	25	207	241
<a href="#">HMB030</a>	442	6.56	450	42	207	293
<a href="#">HMB045</a>	740	10.95	400	60	250	293
<a href="#">HMB060</a>	983	14.5	300	80	250	293
<a href="#">HMB080</a>	1344	14.5	200	75	250	293
<a href="#">HMB100</a>	1639	19.9	300	100	250	293
<a href="#">HMB125</a>	2050	30.66	220	100	250	293
<a href="#">HMB150</a>	2470	36.95	220	100	250	293
<a href="#">HMB200</a>	3080	46.07	175	130	250	293
<a href="#">HMB270</a>	4310	63.79	125	140	250	293
<a href="#">HMB325</a>	5310	79.4	100	140	250	293
<a href="#">HMB400</a>	6800	101	120	190	250	293
<a href="#">HMB700</a>	11600	171.7	100	240	210	250

<a href="#">HMB010</a>	188	2.79	500	25	207	241
<a href="#">HMB030</a>	442	6.56	450	42	207	293
<a href="#">HMB045</a>	740	10.95	400	60	250	293
<a href="#">HMB060</a>	983	14.5	300	80	250	293
<a href="#">HMB080</a>	1344	14.5	200	75	250	293
<a href="#">HMB100</a>	1639	19.9	300	100	250	293
<a href="#">HMB125</a>	2050	30.66	220	100	250	293
<a href="#">HMB150</a>	2470	36.95	220	100	250	293
<a href="#">HMB200</a>	3080	46.07	175	130	250	293
<a href="#">HMB270</a>	4310	63.79	125	140	250	293
<a href="#">HMB325</a>	5310	79.4	100	140	250	293
<a href="#">HMB400</a>	6800	101	120	190	250	293
<a href="#">HMB700</a>	11600	171.7	100	240	210	250

## SPARE PARTS

MODEL	DESCRIPTION	SIZE
<a href="#">ST-512700</a>	Seal Kit	HVM010
<a href="#">ST-74249</a>	Seal Kit	HMB030
<a href="#">ST-02276814</a>	Seal Kit	HMB045
<a href="#">ST-687758</a>	Seal Kit	HMB060 - 080
<a href="#">ST-687759</a>	Seal Kit	HMB100
<a href="#">ST-687644</a>	Seal Kit	HMB150 - 200
<a href="#">ST-687663</a>	Seal Kit	HMB270 - 325

<a href="#">ST-512700</a>	Seal Kit	HVM010
<a href="#">ST-74249</a>	Seal Kit	HMB030
<a href="#">ST-02276814</a>	Seal Kit	HMB045
<a href="#">ST-687758</a>	Seal Kit	HMB060 - 080
<a href="#">ST-687759</a>	Seal Kit	HMB100
<a href="#">ST-687644</a>	Seal Kit	HMB150 - 200
<a href="#">ST-687663</a>	Seal Kit	HMB270 - 325



# MOTORS

## Piston

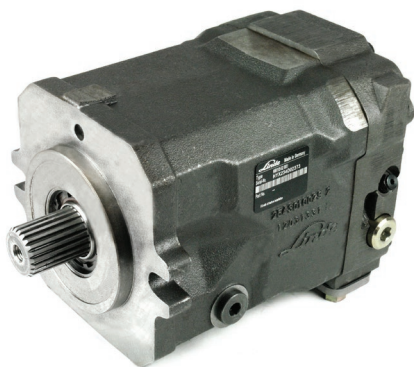


## HMF - FIXED DISPLACEMENT

MODEL	CC/REV	SHAFT	MOUNT	MAX RPM	MAX PRESSURE BAR Continuous
<a href="#">HMF-35-02</a>	35.6	1" 15T	SAE B	4500	420
<a href="#">HMF-50-02</a>	51.3	1 3/8" 21T	SAE C	4200	420
<a href="#">HMF-75-02</a>	75.9	1 3/8" 21T	SAE C	3800	420
<a href="#">HMF-105-02</a>	105.0	1 1/2" 23T	SAE C	3500	420
<a href="#">HMF-135-02</a>	135.6	1 3/4" 27T	SAE D	3200	420

## SPARE PARTS

MODEL	DESCRIPTION	SIZE
<a href="#">291 320 9900</a>	Seal Kit	35
<a href="#">292 320 9900</a>	Seal Kit	50
<a href="#">293 320 9900</a>	Seal Kit	75
<a href="#">294 320 9900</a>	Seal Kit	105
<a href="#">295 320 9900</a>	Seal Kit	130



# MOTORS

## Piston



## HMV - VARIABLE DISPLACEMENT

MODEL	MAX CC/REV	SHAFT	MOUNT	MAX RPM	MAX PRESSURE BAR Continuous
<a href="#">HMV-75-02</a>	75.9	1 3/8" 21T	SAE C	3800	420
<a href="#">HMV-105-02</a>	105.0	1 1/2" 23T	SAE C	3500	420
<a href="#">HMV-135-02</a>	135.6	1 3/4" 27T	SAE D	3200	420
<a href="#">HMV-210-02</a>	210.0	2" 15T	SAE E	2700	420

## SPARE PARTS

MODEL	DESCRIPTION	SIZE
<a href="#">232 320 9902</a>	Seal Kit	50
<a href="#">233 320 9902</a>	Seal Kit	75
<a href="#">234 320 9900</a>	Seal Kit	105
<a href="#">235 320 9902</a>	Seal Kit	135
<a href="#">237 320 9900</a>	Seal Kit	210



# MOTORS

## Piston

> Closed Loop  
> PORTS:

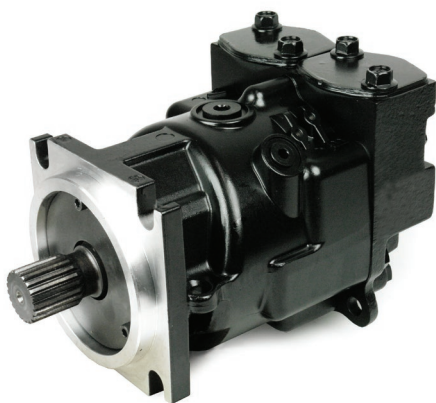


## MF20 SERIES - FIXED DISPLACEMENT

MODEL	CC/REV	MAX RPM	MAX PRESSURE BAR Continuous
<a href="#">MF20</a>	33	3800	345
<a href="#">MF21</a>	51	3500	345
<a href="#">MF22</a>	69	3200	345
<a href="#">MF23</a>	89	2900	345
<a href="#">MF24</a>	118	2700	345
<a href="#">MF25</a>	165	2400	345
<a href="#">MF26</a>	227	2100	345
<a href="#">MF27</a>	333	1900	345

## SPARE PARTS

MODEL	DESCRIPTION	SIZE
<a href="#">9510225</a>	Seal Kit	MF20
<a href="#">9510228</a>	Seal Kit	MF21
<a href="#">9510231</a>	Seal Kit	MF22
<a href="#">9510234</a>	Seal Kit	MF23
<a href="#">9510237</a>	Seal Kit	MF24
<a href="#">9510240</a>	Seal Kit	MF25
<a href="#">9510317</a>	Seal Kit	MF26
<a href="#">9510243</a>	Seal Kit	MF27



# MOTORS

## Piston

> Closed Loop  
> PORTS:

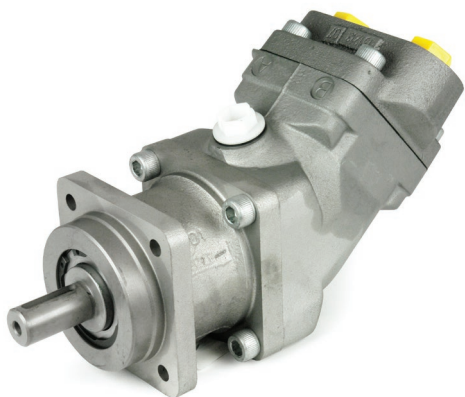


## 90 SERIES - FIXED DISPLACEMENT

MODEL	CC/REV	MAX RPM	MAX PRESSURE BAR Continuous
<a href="#">90M055</a>	55	3900	420
<a href="#">90M075</a>	75	3600	420
<a href="#">90M100</a>	100	3300	420

## SPARE PARTS

MODEL	DESCRIPTION	SIZE
<a href="#">80030S30</a>	Seal Kit	90M055
<a href="#">81030S30</a>	Seal Kit	90M075
<a href="#">82030S30</a>	Seal Kit	90M100



# MOTORS

## Piston

> MOUNT: 4 Bolt ISO  
> PORTS: BSPP Thread  
SAE Flange Code 62

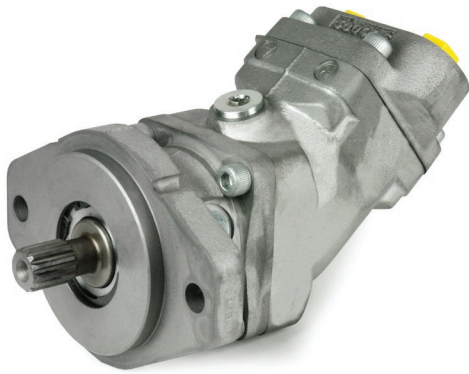


## SFM ISO

MODEL	CC/REV	SHAFT KEYED (mm)	SPIGOT (mm)	MAX RPM	MAX PRESSURE BAR Continuous
<u>SFM-012WNI4</u>	12.6	25	80	8000	350
<u>SFM-017WNI4</u>	17.0	25	80	8000	350
<u>SFM-025WNI4</u>	25.4	30	100	6300	350
<u>SFM-034WNI4</u>	34.2	30	100	6300	350
<u>SFM-047WNI4</u>	47.1	35	125	5700	350
<u>SFM-056WNI4</u>	56.0	35	125	5700	350
<u>SFM-064WNI4</u>	63.5	35	125	5700	350
<u>SFM-084WNI4</u>	83.6	40	140	4700	350
<u>SFM-108WNI4</u>	108.0	45	160	4700	350
<u>SFM-130WNI4</u>	130.0	45	160	4700	300

## SPARE PARTS

MODEL	DESCRIPTION	SIZE
<u>SFSK-50543</u>	Seal Kit	012-034
<u>SFSK-50766</u>	Shaft Seal Kit	040-064
<u>SFSK-50585</u>	Shaft Seal Kit	084-130
<u>SFSK-50548</u>	Complete Seal Kit	012-034
<u>SFSK-50556</u>	Complete Seal Kit	047-064
<u>SFSK-50591</u>	Complete Seal Kit	084-130



# MOTORS

## Piston

> MOUNT: SAE B, SAE C, SAE D  
> PORTS: BSPP Thread  
SAE Flange Code 62



## SFM SAE

MODEL	CC/REV	SHAFT KEYED	SHAFT SPLINE	MOUNT	MAX RPM	MAX PRESSURE BAR Continuous
<a href="#">SFM-012WNC4</a>	12.6	1"	7/8" 13T	SAE B	7500	350
<a href="#">SFM-017WNC4</a>	17.0	1"	7/8" 13T	SAE B	7500	350
<a href="#">SFM-025WNC4</a>	25.4	1"	7/8" 13T	SAE B	5900	350
<a href="#">SFM-034WNC4</a>	34.2	1"	7/8" 13T	SAE B	5900	350
<a href="#">SFM-047WNC4</a>	47.1	1 1/4"	1 1/4" 14T	SAE C	5300	350
<a href="#">SFM-056WNC4</a>	56.0	1 1/4"	1 1/4" 14T	SAE C	5300	350
<a href="#">SFM-064WNC4</a>	63.5	1 1/4"	1 1/4" 14T	SAE C	4400	350
<a href="#">SFM-084WNC4</a>	83.6	1 1/4"	1 1/4" 14T	SAE C	4400	350
<a href="#">SFM-108WNC4</a>	108.0	1 1/4"	1 1/4" 14T	SAE C	4200	350
<a href="#">SFM-130WNC4</a>	130.0	1 3/4"	1 3/4" 13T	SAE D	4200	300

## SPARE PARTS

MODEL	DESCRIPTION	SIZE
<a href="#">SFSK-50486</a>	Seal Kit	012-034
<a href="#">SFSK-50480</a>	Seal Kit	047-064
<a href="#">SFSK-50458</a>	Seal Kit	108



# MOTORS

## Geroler

- > MOUNT: 2 Bolt SAE A  
1/2" BSPP Ports
- > OUTPUT SHAFT OPTIONS: 25mm Parallel - CODE A  
1" Parallel - CODE C  
1" 6B Spline - CODE E
- > Max Return Line Pressure with Case Drain - 120 Bar
- > All Motors Supplied with Case Drain
- > Similar To Other Renowned Geroler Motors Sold in NZ



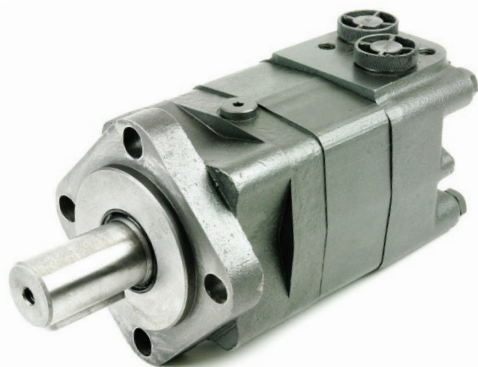
## OMZR SERIES

MODEL	CC/REV	MAX RPM	MAX PRESSURE BAR Continuous
OMZR50	50	970	170
OMZR80	80	940	170
OMZR100	100	750	170
OMZR125	125	600	170
OMZR160	160	470	170
OMZR200	200	375	170
OMZR250	250	300	170
OMZR315	315	240	170
OMZR375	375	200	170
OMZR400	400	190	170

## SPARE PARTS

MODEL	DESCRIPTION
OMZR-SK	Seal Kit





# MOTORS

## Disc Valve

> MOUNT:

2 Bolt SAE A  
4 Bolt SAE Mount - **CODE E4**  
½" BSPP Ports



**STF**  
HYDRAULIC TRANSMISSIONS

> OUTPUT SHAFT OPTIONS:

25mm Parallel - **CODE A**  
32mm Parallel - **CODE B**  
1" Parallel - **CODE D**  
1 ¼" Parallel - **CODE G**  
1" 6B Spline - **CODE S**

> Max Return Line Pressure with Case Drain - 150 Bar

> Similar To Other Renowned Disc Valve Motors Sold in NZ

## OMZS SERIES

MODEL	CC/REV	MAX RPM	MAX PRESSURE BAR Continuous
<u>OMZS80</u>	80	988	250
<u>OMZS100</u>	100	900	250
<u>OMZS125</u>	125	720	250
<u>OMZS160</u>	160	560	250
<u>OMZS200</u>	200	450	250
<u>OMZS250</u>	250	360	250
<u>OMZS315</u>	315	280	250
<u>OMZS400</u>	400	240	250

## SPARE PARTS

MODEL	DESCRIPTION
<u>OMZS-SK</u>	Seal Kit



# MOTORS

## Disc Valve

ns



> MOUNT:

4 Bolt ISO 125  
3/4" BSPP  
3/4" Flange Port

> OUTPUT SHAFT OPTIONS:

40mm Parallel - CODE M  
1 1/2" Parallel - CODE G  
1 1/2" 17T - CODE F

> Max Return Line Pressure with Case Drain - 150 Bar

> Similar To Other Renowned Disc Valve Motors Sold in NZ

## OMZT SERIES

MODEL	CC/REV	MAX RPM	MAX PRESSURE BAR Continuous
<u>OMZT160</u>	160	614	210
<u>OMZT200</u>	200	615	210
<u>OMZT250</u>	250	495	210
<u>OMZT315</u>	315	380	210
<u>OMZT400</u>	400	302	210
<u>OMZT500</u>	500	237	210
<u>OMZT630</u>	630	196	210
<u>OMZT800</u>	800	154	210

## SPARE PARTS

MODEL	DESCRIPTION
<u>OMZT-SK</u>	Seal Kit



# MOTORS

## Vane

> MOUNT: 2/4 Bolt SAE C  
> PORTS: Code 61 Flange  
> SHAFTS: 1 1/4" Keyed  
1 1/4" x 14T



## VM4SE

MODEL	CC/REV	MAX RPM	MAX PRESSURE BAR Continuous
<u>VM4SE1-214</u>	222.0	3600	175
<u>VM4SE1-153</u>	158.5	3600	175
<u>VM4SE1-185</u>	191.6	3600	175

## SPARE PARTS

MODEL	DESCRIPTION
<u>VS14-42336-5</u>	Seal Kit

