

# LOG SPLITTER COMPONENTS



## DISCLAIMER

- > All performance and specification figures are where possible taken from the latest documentation and may vary from older literature versions.
- > Product photos shown are indicative only. Actual products may differ from that shown.
- > Failure or improper selection or improper use of the products described herein or related items can cause death, personal injury and property damage. Whilst every reasonable effort has been made to ensure that the information contained herein is accurate, no warranty is given that it is free from error or omission. Windust Hydraulic Services Ltd will not accept liability for any injury, loss or damage arising directly or indirectly from any use or reliance on this information.



**HYDRAULIC  
SOLUTION  
SPECIALISTS**

11 Kells Place  
Frankton  
HAMILTON 3204  
New Zealand

P +64 07 847 6888  
[www.windusthydraulics.co.nz](http://www.windusthydraulics.co.nz)

# LOG SPLITTER COMPONENTS Index

## PRODUCT

## BRAND

## MODEL

Valve	Prince	LS 3000, LSR 3060 3
Valve	Prince	RD 522
Gear Pump	GRH	Wood Spiltter Pump 4 Bolt
Gear Pump	GRH	Wood Spiltter Pump 2 Bolt
Couplings	RB Hydraulics	Coupling Spider
Couplings	RB Hydraulics	Petrol Engine Drive Half
Couplings	RB Hydraulics	Pump Drive Half
Bell Housings	RB Hydraulics	Log Splitter



# LOG SPLITTER COMPONENTS

## Valve

- > Single Bank Wood Splitter
- > Standard Pressure Kick Out Valve
- > No Power Beyond Available
- > Spare Parts Available

**Prince**

## LS 3000

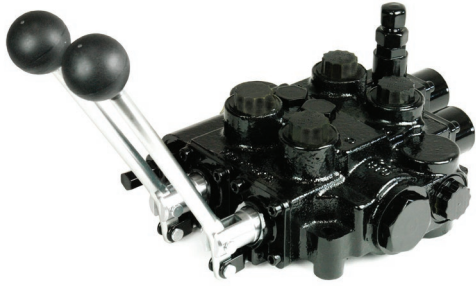
MODEL	NOMINAL FLOW (l/min)	PRESSURE (psi)		P&T (BSPP)	A&B (BSPP)
		P	T		
<b>LS3000</b>	94	2750	500	3/4"	3/4"



- > Regen Wood Splitter
- > Suitable for Single Stage Pumps
- > Rapid Extend Mode
- > No Power Beyond Available
- > Spare Parts Available

## LSR 3060 3

MODEL	NOMINAL FLOW (l/min)	PRESSURE (psi)		P&T (BSPP)	A&B (BSPP)
		P	T		
<b>LSR-3060-3 BSPP</b>	94	2750	500	1/2"	3/4"



# LOG SPLITTER COMPONENTS

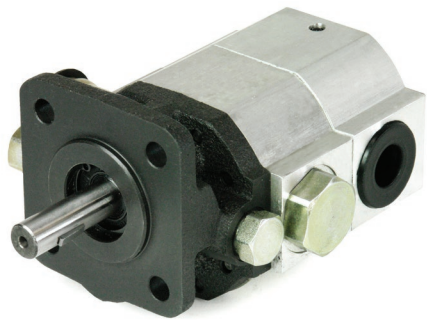
## Valve

- > Double Bank Wood Splitter Valve
- > Wood Splitter & Cylinder Spool for Ring Lifter
- > Power Beyond Option Available
- > Spare Parts Available



## RD 522

MODEL	NOMINAL FLOW (l/min)	PRESSURE (psi)		P&T (BSPP)	A&B (BSPP)
		P	T		
<b>RD52*CCEA5A4B1</b>	<b>94</b>	<b>3000</b>	<b>500</b>	<b>3/4"</b>	<b>3/4"</b>



# LOG SPLITTER COMPONENTS

**Gear Pump**

- > MODELS 2CB-E6 TO 2CB-E12 - Standard 4 Bolt Mount 1/2" DIA Keyed Shaft
- > A Range of Bell Housings and Couplings also Available

## WOOD SPLITTER PUMP 4 BOLT

MODEL	CC/REV		FLOW (GPM) @ 3600 RPM	MAX PRESSURE BAR	HP GUIDELINE
	HIGH FLOW	LOW FLOW			
<u>2CB-E6.3/3.0</u>	6.3	3.0	9	207	5.5 - 7
<u>2CB-E8.8/3.6</u>	8.8	3.6	10.5	207	8
<u>2CB-E10.9/3.6</u>	10.9	3.6	13	207	7 - 9
<u>2CB-E13/4.2</u>	13	4.2	16	207	11 - 13

## SPARE PARTS

MODEL	DESCRIPTION
<u>2CB-SK</u>	Seal Kit - 4 Bolt Mount



# LOG SPLITTER COMPONENTS

## Gear Pump

- > MODELS 2CB-E15.2 TO 2CB-E22 - 2 Bolt A Mount  $\frac{5}{8}$ " DIA Keyed Shaft
- > A Range of Bell Housings and Couplings also Available

## WOOD SPLITTER PUMP 2 BOLT

MODEL	CC/REV		FLOW (GPM) @ 3600 RPM	MAX PRESSURE BAR	HP GUIDELINE
	HIGH FLOW	LOW FLOW			
<a href="#">2CB-E15.2/7.6</a>	15.2	7.6	22	207	15 - 18
<a href="#">2CB-E22.9/7.6</a>	22.9	7.6	28	207	18 - 20

## SPARE PARTS

MODEL	DESCRIPTION
<a href="#">2CB-SK-SAE</a>	Seal Kit - 2 Bolt A Mount



# LOG SPLITTER COMPONENTS

**Couplings**



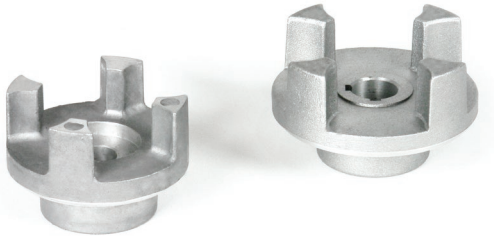
## COUPLING SPIDER

MODEL	SERIES	TORQUE RATING (Nm)	MAX RPM	MAX O/D (mm)
<b>RB ER200</b>	HC200	90	10500	55
<b>RB ER300</b>	HC300	160	8500	65



## PETROL ENGINE DRIVE HALF

MODEL	SHAFT	KEY SIZE
<b>&gt; HUB SERIES HC200</b>		
<b>RB HC219MC048</b>	3/4" Keyed	
<b>RB HC222NC048</b>	7/8" Keyed	
<b>RB HC225NC048</b>	1" Keyed	
<b>&gt; HUB SERIES HC300</b>		
<b>RB HC319MC048</b>	3/4" Keyed	3/16"
<b>RB HC322NC048</b>	7/8" Keyed	1/4"
<b>RB HC325AC048</b>	25mm Keyed	8mm
<b>RB HC325NC048</b>	1" Keyed	1/4"



# LOG SPLITTER COMPONENTS

Couplings



## PUMP DRIVE HALF

MODEL	PUMP TYPE	SHAFT	KEY SIZE
-------	-----------	-------	----------

> HUB SERIES HC200

<b>RB HC212HC048</b>	4 Bolt Mount	½" Keyed	
<b>RB HC215LC048</b>	2 Bolt Mount	⅝" Keyed	3/16"

> HUB SERIES HC300

<b>RB HC312HC048</b>	4 Bolt Mount	½" Keyed	
<b>RB HC315MC048</b>	2 Bolt Mount	⅝" Keyed	3/16"





# LOG SPLITTER COMPONENTS

**Bell Housings**



## LOG SPLITTER

MODEL	MOUNT	ENGINE HP	SPIGOT (mm)	PCD DIA (mm)
<b><u>RB BHE112045A</u></b>	<b>4081 4 BOLT</b>	<b>3 - 5.5</b>	<b>40.3 MALE</b>	<b>92</b>
<b><u>RB BHE152045A</u></b>	<b>4081 4 BOLT</b>	<b>7 - 18</b>	<b>146 FEMALE</b>	<b>127</b>
<b><u>RB BHE172082A</u></b>	<b>SAE A 2 BOLT</b>	<b>18</b>	<b>163.5 FEMALE</b>	<b>127</b>
<b><u>RB BHE223A082A</u></b>	<b>SAE A 2 BOLT</b>	<b>18+</b>	<b>146.05 FEMALE</b>	<b>196.85 (30/45° OFFSET)</b>
<b><u>RB BHE223C082A</u></b>	<b>SAE A 2 BOLT</b>	<b>18+</b>	<b>177.8 (7") FEMALE</b>	<b>196.85 (30/45° OFFSET)</b>

