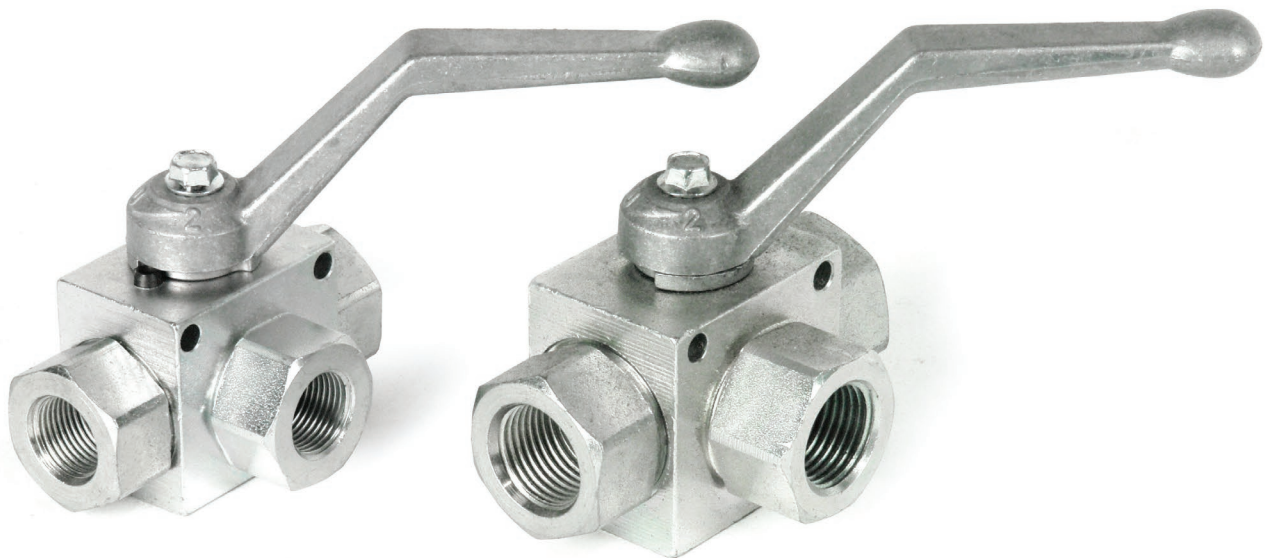


LINE MOUNT VALVES



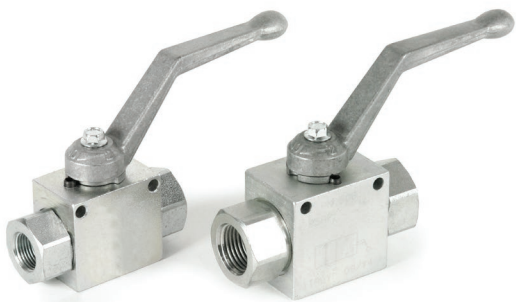
DISCLAIMER

- > All performance and specification figures are where possible taken from the latest documentation and may vary from older literature versions.
- > Product photos shown are indicative only. Actual products may differ from that shown.
- > Failure or improper selection or improper use of the products described herein or related items can cause death, personal injury and property damage. Whilst every reasonable effort has been made to ensure that the information contained herein is accurate, no warranty is given that it is free from error or omission. Windust Hydraulic Services Ltd will not accept liability for any injury, loss or damage arising directly or indirectly from any use or reliance on this information.

LINE MOUNT VALVES Index

PRODUCT	BRAND	MODEL
Ball Valve	MTC	Ball Valve 2 Way
Ball Valve	MTC	Ball Valve 3 Way 'L' Port, Ball Valve 3 Way 'T' Port
Inline Check Valve	MTC	Inline Check Valve 0.5 Bar, 4 Bar
Inline Check Valve	MTC	Inline Pilot Operated Check Valve
Dual Pilot Operated Check Valve	MTC	Dual Pilot Operated Check Valve
Dual Pilot Operated Check Valve	MTC	Banjo with Tube
Dual Pilot Operated Check Valve	MTC	Banjo Bolts
Dual Pilot Operated Check Valve	MTC	Bonded Washers
Dual Pilot Operated Check Valve	MTC	Banjo End
Needle Valve	MTC	Inline Needle Valve
Flow Control	MTC	Inline Flow Control
Flow Control	MTC	Pressure Compensated Inline Flow Control
Flow Control	MTC	3 Port Priority - Excess to Pressure
Flow Control	MTC	3 Port Priority - Excess to Tank
Flow Control	Brand	3 Port Priority - Excess to Pressure
Flow Control	Hoyea	3 Port Priority - Excess to Pressure
Flow Control	Hoyea	3 Port Priority Relief - Excess to Pressure
Velocity Fuse	MTC	Velocity Fuse Insert
Velocity Fuse	MTC	Inline Velocity Fuse
Shuttle Valve	MTC	Shuttle Valve
Cartridge Flow Divider	Brand	Flow Divider
Cartridge Flow Divider	MTC	Flow Divider / Combiner 50/50

PRODUCT	BRAND	MODEL
Relief Valve	MTC	3 Port Relief Valve
Crossline Relief Valve	MTC	Crossline Relief Valve
Counter Balance Valve (Over Centre Valve)	MTC	Single Over Centre Valve
Counter Balance Valve (Over Centre Valve)	MTC	Dual Over Centre Valve



LINE MOUNT VALVE

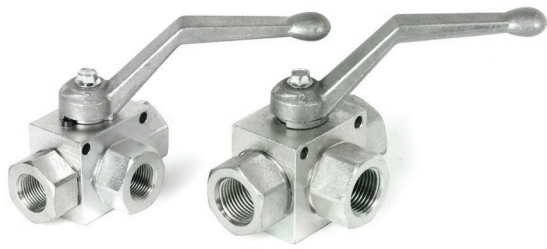
Ball Valve

- > High Pressure with Mounting Holes
- > Complete with Handle



BALL VALVE 2 WAY

MODEL	PORT SIZE (BSPP)	NOMINAL FLOW (l/min)	MAX PRESSURE BAR
<u>MTC-RSAP2V01FF</u>	<u>1/4"</u>	<u>30</u>	<u>500</u>
<u>MTC-RSAP2V02FF</u>	<u>3/8"</u>	<u>50</u>	<u>500</u>
<u>MTC-RSAP2V03FF</u>	<u>1/2"</u>	<u>80</u>	<u>500</u>
<u>MTC-RSAP2V04FF</u>	<u>3/4"</u>	<u>120</u>	<u>350</u>
<u>MTC-RSAP2V05FF</u>	<u>1"</u>	<u>160</u>	<u>350</u>
<u>MTC-RSAP2V06FF</u>	<u>1 1/4"</u>	<u>160</u>	<u>280</u>
<u>MTC-RSAP2V07FF</u>	<u>1 1/2"</u>	<u>160</u>	<u>220</u>



LINE MOUNT VALVE

Ball Valve

- > High Pressure with Mounting Holes
- > Complete with Handle



BALL VALVE 3 WAY 'L' PORT

MODEL	PORT SIZE (BSPP)	NOMINAL FLOW (l/min)	MAX PRESSURE BAR
-------	------------------	----------------------	------------------

MTC-RSAP3V01L	1/4"	30	380
MTC-RSAP3V02L	3/8"	50	380
MTC-RSAP3V03L	1/2"	80	320
MTC-RSAP3V04L	3/4"	120	300
MTC-RSAP3V05L	1"	160	280
MTC-RSAP3V06L	1 1/4"	160	240

BALL VALVE 3 WAY 'T' PORT

MODEL	PORT SIZE (BSPP)	NOMINAL FLOW (l/min)	MAX PRESSURE BAR
-------	------------------	----------------------	------------------

MTC-RSAP3V01T	1/4"	30	380
MTC-RSAP3V02T	3/8"	50	380
MTC-RSAP3V03T	1/2"	80	320
MTC-RSAP3V04T	3/4"	120	300
MTC-RSAP3V05T	1"	160	280
MTC-RSAP3V06T	1 1/4"	160	240



LINE MOUNT VALVE

Inline Check Valve



INLINE CHECK VALVE 0.5 BAR

MODEL	PORT SIZE (BSP)	NOMINAL FLOW (l/min)	CRACKING BAR	MAX PRESSURE BAR
MTC-VUR01C	1/4"	30	0.5	400
MTC-VUR02C	3/8"	50	0.5	400
MTC-VUR03C	1/2"	90	0.5	350
MTC-VUR04C	3/4"	130	0.5	300
MTC-VUR05C	1"	180	0.5	270
MTC-VUR06C	1 1/4"	250	0.5	250
MTC-VUR07C	1 1/2"	380	0.5	200

INLINE CHECK VALVE 4 BAR

MODEL	PORT SIZE (BSP)	NOMINAL FLOW (l/min)	CRACKING BAR	MAX PRESSURE BAR
MTC-VUR01C4	1/4"	30	4	400
MTC-VUR02C4	3/8"	50	4	400
MTC-VUR03C4	1/2"	90	4	350
MTC-VUR04C4	3/4"	130	4	300
MTC-VUR05C4	1"	180	4	270
MTC-VUR06C4	1 1/4"	250	4	250
MTC-VUR07C4	1 1/2"	380	4	200



LINE MOUNT VALVE

Inline Check Valve



INLINE PILOT OPERATED CHECK VALVE

MODEL	PORT SIZE (BSPP)	NOMINAL FLOW (l/min)	MAX PRESSURE BAR
MTC-VBPS02	3/8"	40	350
MTC-VBPS03	1/2"	60	350
MTC-VBPS04	3/4"	90	300



LINE MOUNT VALVE

Dual Pilot Operated Check
Valve



DUAL PILOT OPERATED CHECK VALVE

MODEL	PORT SIZE (BSPP)	NOMINAL FLOW (l/min)	MAX PRESSURE BAR
<u>MTC-VRDE01A</u>	$\frac{1}{4}$ "	30	350
<u>MTC-VRDE02A</u>	$\frac{3}{8}$ "	50	300
<u>MTC-VRDE025A</u>	$\frac{1}{2}$ "	50	300



LINE MOUNT VALVE

Dual Pilot Operated Check
Valve



BANJO WITH TUBE

MODEL	PORT SIZE (BSPP)	TUBE SIZE (mm)	MAX PRESSURE BAR	TUBE LENGTH (mm)
MTC-402026	1/4"	12	350	200
MTC-402015	3/8"	12	350	200
MTC-402031	1/2"	15	350	200
MTC-402033	1/2"	15	350	400

BANJO BOLTS

MODEL	DESCRIPTION
MTC-402040	Banjo Bolt 1/4" BSPP 13 x 26 x 33
MTC-402041	Banjo Bolt 3/8" BSPP 15 x 31 x 39
MTC-402043	Banjo Bolt 1/2" BSPP 18 x 38 x 46

BONDED WASHERS

MODEL	DESCRIPTION
MTC-440068	Bonded Washer 1/4" BSPP
MTC-440045	Bonded Washer 3/8" BSPP
MTC-440070	Bonded Washer 1/2" BSPP

BANJO END

MODEL	PORT SIZE (BSPP)	DESCRIPTION
MTC-402017DO	3/8"	Banjo only with Cutting Ring + Nut



LINE MOUNT VALVE Needle Valve

> Inline Restrictive Both Ways



INLINE NEEDLE VALVE

MODEL	PORT SIZE (BSPP)	NOMINAL FLOW (l/min)	MAX PRESSURE BAR
<u>MTC-VRFB9001</u>	$\frac{1}{4}$ "	30	350
<u>MTC-VRFB9002</u>	$\frac{3}{8}$ "	40	350
<u>MTC-VRFB9003</u>	$\frac{1}{2}$ "	50	350
<u>MTC-VRFB9004</u>	$\frac{3}{4}$ "	80	320
<u>MTC-VRFB9005</u>	1"	110	300



LINE MOUNT VALVE

Flow Control

> Inline Restrictive with Free Reverse Flow



INLINE FLOW CONTROL

MODEL	PORT SIZE (BSPP)	NOMINAL FLOW (l/min)	MAX PRESSURE BAR
MTC-VRFU9001	1/4"	30	350
MTC-VRFU9002	3/8"	40	350
MTC-VRFU9003	1/2"	50	350
MTC-VRFU9004	3/4"	80	320
MTC-VRFU9005	1"	110	300



> Inline Restrictive Pressure Compensated with Free Reverse Flow

PRESSURE COMPENSATED INLINE FLOW CONTROL

MODEL	PORT SIZE (BSPP)	NOMINAL FLOW (l/min)	MAX PRESSURE BAR
MTC-VRFU9002C	3/8"	30	300
MTC-VRFU9003C	1/2"	45	250



LINE MOUNT VALVE

Flow Control

- > Priority 3 Way Flow Control -Excess to Pressure
- > Pressure Compensated



3 PORT PRIORITY - EXCESS TO PRESSURE

MODEL	PORT SIZE (BSPP)	NOMINAL FLOW (l/min)	MAX ADJUSTED FLOW (l/min)	MAX PRESSURE BAR
MTC-RFP02	3/8"	50	28	210
MTC-RFP03	1/2"	85	50	210
MTC-RFP03B*	1/2"	85	50	210
MTC-RFP04	3/4"	150	90	210

* Lever 180 degrees



- > Priority 3 Way Flow Control -Excess to Tank
- > Pressure Compensated

3 PORT PRIORITY - EXCESS TO TANK

MODEL	PORT SIZE (BSPP)	NOMINAL FLOW (l/min)	MAX ADJUSTED FLOW (l/min)	MAX PRESSURE BAR
MTC-RFP02/SD	3/8"	52	28	210
MTC-RFP03/SD	1/2"	85	50	210



LINE MOUNT VALVE

Flow Control

- > Priority 3 Way Flow Control -Excess to Pressure
- > Pressure Compensated



3 PORT PRIORITY - EXCESS TO PRESSURE

MODEL	PORT SIZE (UNO)	STD FLOW RATE (l/min)	MAX PRESSURE BAR
FC51-10SS	7/8" UNO	0-60	207
FC51-12SS	1 1/16" UNO	0-114	207



LINE MOUNT VALVE

Flow Control

- > Priority 3 Way Flow Control -Excess to Pressure
- > Pressure Compensated



3 PORT PRIORITY - EXCESS TO PRESSURE

MODEL	PORT SIZE (BSPP)	STD FLOW RATE (l/min)	MAX PRESSURE BAR
FC51-10	$\frac{1}{2}$ "	0-60	207
FC51-12	$\frac{3}{4}$ "	0-114	207



LINE MOUNT VALVE

Flow Control

- > Priority 3 Way Flow Control -Excess to Pressure
- > Complete with Relief
- > Pressure Compensated



3 PORT PRIORITY RELIEF - EXCESS TO PRESSURE

MODEL	PORT SIZE (BSPP)	STD FLOW RATE (l/min)	MAX PRESSURE BAR
FCR51-10	½" c/w relief	0-60	207
FCR51-12	¾" c/w relief	0-114	207



LINE MOUNT VALVE Velocity Fuse



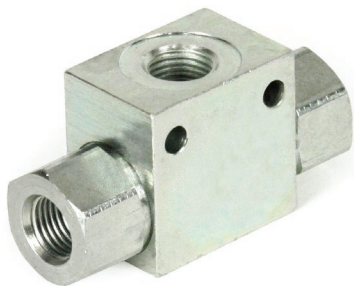
VELOCITY FUSE INSERT

MODEL	PORT SIZE (BSPP)	NOMINAL FLOW (l/min)	STD FLOW RATE (l/min)	MAX PRESSURE BAR
MTC-VUBA02	$\frac{3}{8}$ "	45	35	350
MTC-VUBA03	$\frac{1}{2}$ "	67	60	350
MTC-VUBA04	$\frac{3}{4}$ "	169	149	350



INLINE VELOCITY FUSE

MODEL	PORT SIZE (BSPP)	NOMINAL FLOW (l/min)	STD FLOW RATE (l/min)	MAX PRESSURE BAR
MTC-VUBA01FF	$\frac{1}{4}$ "	29	18	350
MTC-VUBA02FF	$\frac{3}{8}$ "	45	35	350
MTC-VUBA03FF	$\frac{1}{2}$ "	67	60	350
MTC-VUBA04FF	$\frac{3}{4}$ "	169	149	350



LINE MOUNT VALVE

Shuttle Valve



SHUTTLE VALVE

MODEL	PORT SIZE (BSPP)	NOMINAL FLOW (l/min)	MAX PRESSURE BAR
MTC-VUSF01	1/4"	35	500



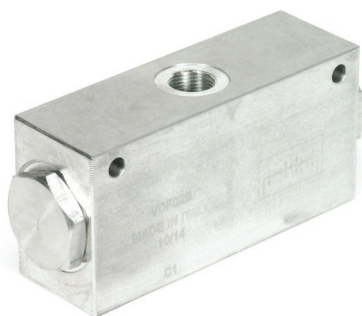
LINE MOUNT VALVE

Cartridge Flow Divider



FLOW DIVIDER

MODEL	PORT SIZE (UNO)	NOMINAL FLOW (l/min)	MAX PRESSURE BAR
BX50-16SAE	1 $\frac{5}{16}$ "	170	207



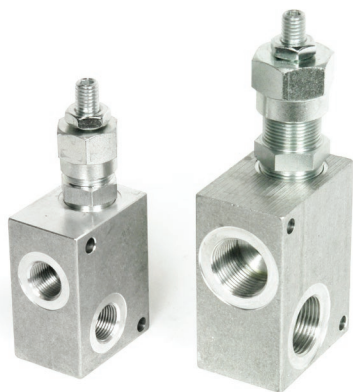
LINE MOUNT VALVE

Cartridge Flow Divider



FLOW DIVIDER / COMBINER 50/50

MODEL	PORT SIZE (BSPP)	FLOW RATE RANGE (l/min)	MAX PRESSURE BAR
MTC-VDF02A	$\frac{3}{8}$ " - $\frac{3}{8}$ "	6.5 - 12	210
MTC-VDF025C	$\frac{1}{2}$ " - $\frac{3}{8}$ "	24 - 38	210



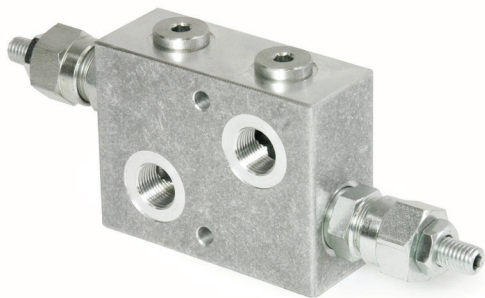
LINE MOUNT VALVE

Relief Valve



3 PORT RELIEF VALVE

MODEL	PORT SIZE (BSPP)	NOMINAL FLOW (l/min)	MAX PRESSURE BAR
<u>MTC-VMDL2001B1</u>	1/4"	20	350
<u>MTC-VMD3502B1</u>	3/8"	35	350
<u>MTC-VMD8003B1</u>	1/2"	80	260
<u>MTC-VMD8004B1</u>	3/4"	80	260
<u>MTC-VMD15005B1</u>	1"	150	350



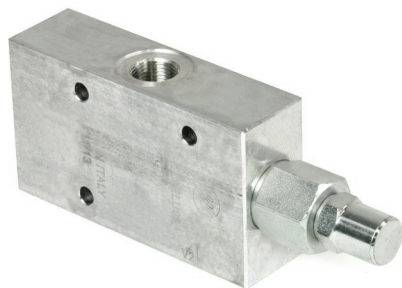
LINE MOUNT VALVE

Crossline Relief Valve



CROSSLINE RELIEF

MODEL	PORT SIZE (BSPP)	NOMINAL FLOW (l/min)	MAX PRESSURE BAR
<u>MTC-VMDI3502B1</u>	$\frac{3}{8}$ "	35	350
<u>MTC-VMDI8003B1</u>	$\frac{1}{2}$ "	80	260
<u>MTC-VMDI8004B1</u>	$\frac{3}{4}$ "	80	260



LINE MOUNT VALVE

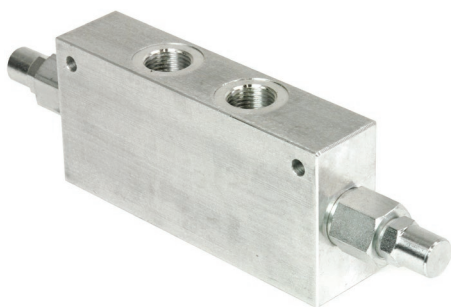
Counter Balance Valve
(Over Centre Valve)

> Max Pressure 350 Bar



SINGLE OVER CENTRE VALVE

MODEL	PORT SIZE (BSPP)	NOMINAL FLOW (l/min)	RATIO
MTC-WBCASELLU02A	$\frac{3}{8}$ "	40	1:4.25
MTC-WBCASELU03A	$\frac{1}{2}$ "	60	1:4.25
MTC-WBCASELU04A	$\frac{3}{4}$ "	120	1:6.2



> Max Pressure 270 Bar

DUAL OVER CENTRE VALVE

MODEL	PORT SIZE (BSPP)	NOMINAL FLOW (l/min)	RATIO
MTC-WBCADELU02A	$\frac{3}{8}$ "	40	1:4.25
MTC-WBCADELU03A	$\frac{1}{2}$ "	60	1:4.25
MTC-WBCADELU04A	$\frac{3}{4}$ "	120	1:6.2

