

COUPLINGS



DISCLAIMER

- > All performance and specification figures are where possible taken from the latest documentation and may vary from older literature versions.
- > Product photos shown are indicative only. Actual products may differ from that shown.
- > Failure or improper selection or improper use of the products described herein or related items can cause death, personal injury and property damage. Whilst every reasonable effort has been made to ensure that the information contained herein is accurate, no warranty is given that it is free from error or omission. Windust Hydraulic Services Ltd will not accept liability for any injury, loss or damage arising directly or indirectly from any use or reliance on this information.

COUPLINGS

Index

PRODUCT	BRAND	MODEL
<u>Aluminium Drive Coupling</u>	<u>RB Hydraulics</u>	<u>Coupling Spider</u>
<u>Aluminium Drive Coupling</u>	<u>RB Hydraulics</u>	<u>Electric Motor Drive Half</u>
<u>Aluminium Drive Coupling</u>	<u>RB Hydraulics</u>	<u>Pump Drive Half</u>
<u>Spline Coupling Weld In Hub</u>	<u>OEM</u>	<u>Spline Coupling Weld In Hub</u>
<u>Slip Sleeve / Reducing Adaptor</u>	<u>OEM</u>	<u>Slip Sleeve / Reducing Adaptor</u>
<u>Clamp Locks</u>	<u>OEM</u>	<u>Weld Hub, Companion Flange</u>
<u>Spline Shafts</u>	<u>OEM</u>	<u>Spline Shafts</u>



COUPLINGS

Aluminium Drive Coupling



COUPLING SPIDER

MODEL	SERIES	TORQUE RATING (Nm)	MAX RPM	MAX O/D (mm)
RB ER100	HC100	20	14000	42
RB ER200	HC200	90	10500	55
RB ER300	HC300	160	8500	65
RB ER500	HC500	450	6000	95
RB ER700	HC700	625	5100	120



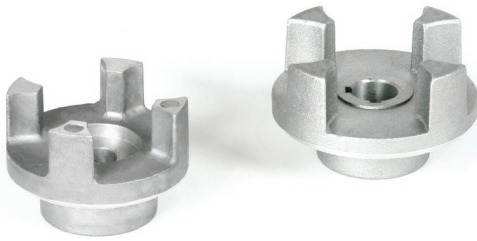
COUPLINGS

Aluminium Drive Coupling



ELECTRIC MOTOR DRIVE HALF

MODEL	FRAME	4 POLE (Kw)	SHAFT DIA (mm)
> HUB SERIES HC100			
RB HC1110	D63	0.12 - 0.25	11
RB HC1140	D71	0.25 - 0.37	14
RB HC1190	D80	0.55 - 0.75	19
> HUB SERIES HC200			
RB HC2190	D80	0.55 - 0.75	19
RB HC2240	D90	1.1 - 1.5	24
RB HC2280	D100/112	2.2 - 4.0	28
> HUB SERIES HC300			
RB HC3190	D80	0.55 - 0.75	19
RB HC3240	D90	1.1 - 1.5	24
RB HC3280	D100/112	2.2 - 4.0	28
> HUB SERIES HC500			
RB HC5380	D132	5.5 - 12.5	38
RB HC5420	D160	11.0 - 15.0	42
RB HC5480	D180	18.5 - 22.0	48
> HUB SERIES HC700			
RB HC7420	D160	11.0 - 15.0	42
RB HC7550	D200	30	55
RB HC7600	D225	37.0 - 45.0	60
RB HC7650	D250	55	65



COUPLINGS

Aluminium Drive Coupling



PUMP DRIVE HALF

MODEL	PUMP TYPE	SHAFT SIZE	KEY SIZE
-------	-----------	------------	----------

> HUB SERIES HC100

RB HC101A	Group 1 Euro	1:8 Taper	
RB HC101B	Group 1.5 Euro	1:8 Taper	
RB HC101D	Group 1 Euro	1:5 Taper	
RB HC105A	-	6mm Keyed	2mm
RB HC112HA030	-	½" Keyed	⅛"
RB HC119MC050	-	¾" Keyed	⅜"

> HUB SERIES HC200

RB HC201A	Group 1 Euro	1:8 Taper	
RB HC201B	Group 1.5 Euro	1:8 Taper	
RB HC201D	Group 1 Euro	1:5 Taper	
RB HC202AB	Group 2 Euro	1:8 Taper	3.2/4mm
RB HC212HC048	-	½" Keyed	⅛"
RB HC215LC048	-	⅝" Keyed	4mm
RB HC219MC048	-	¾" Keyed	⅜"
RB HC222NC048	-	⅞" Keyed	¼"
RB HC225NC048	-	1" Keyed	¼"

> HUB SERIES HC300

RB HC301A	Group 1 Euro	1:8 Taper	
RB HC302AB	Group 2 Euro	1:8 Taper	3.2/4mm
RB HC303A	Group 3 Euro	1:8 Taper	4mm
RB HC309TH	-	⅝" 9T Spline	
RB HC312HC048	-	½" Keyed	⅛"
RB HC315LC048	-	⅝" Keyed	4mm
RB HC315MC048	-	⅞" Keyed	⅜"
RB HC319MC048	-	¾" Keyed	⅜"
RB HC322NC048	-	⅞" Keyed	¼"
RB HC325AC048	-	25mm Keyed	8mm
RB HC325NC048	-	1" Keyed	¼"

> SEE PAGE OVER FOR PUMP DRIVE HALF CONTINUED...

PUMP DRIVE HALF CONT.

MODEL	PUMP TYPE	SHAFT SIZE	KEY SIZE
-------	-----------	------------	----------

> HUB SERIES HC500

RB HC502AB	Group 2 Euro	1:8 Taper	3.2mm / 4mm
RB HC503A	Group 3 Euro	1:8 Taper	4mm
RB HC522NC048	-	7/8" Keyed	1/4"
RB HC525AC048	-	25mm Keyed	8mm
RB HC525NC048	-	1" Keyed	1/4"

> HUB SERIES HC700

RB HC703A	Group 3 Euro	1:8 Taper	4mm
RB HC731PC065	-	1 1/4" Keyed	5/16"



COUPLINGS

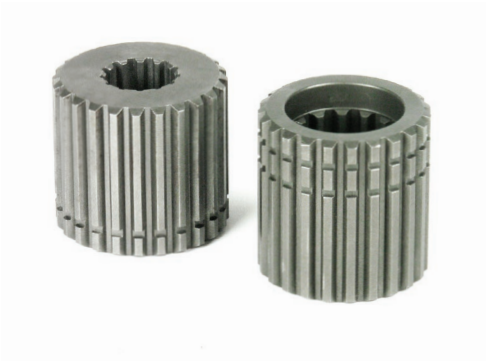
Spline Coupling Weld-In Hub



OEM DYNAMICS

SPLINE COUPLING WELD-IN HUB

MODEL	NO. TEETH	NOMINAL O.D	HUB LENGTH	HUB DIA.
94/50005	6	1"	1.75"	2"
94/50033	6	1 3/8"	2.50"	2.50"
94/50001	9	5/8"	1.25"	1.25"
94/500139	10	17mm	1.50"	1.50"
94/50002	11	3/4"	1.50"	1.50"
94/50003	13	7/8"	1.50"	1.50"
94/50008	13	1 3/4"	2.25"	3"
94/50035	14	20mm	1.50"	1.50"
94/50006	14	1 1/4"	2"	2.25"
94/50004	15	1"	1.75"	1.75"
94/50037	15	2"	3"	3.25"
94/50068	16	30mm	2"	2.25"
94/50011	16	35mm	2"	2.25"
94/50039	16	1.7"	2.25"	2.75"
94/50040	16	2 1/8"	2.96"	3.50"
94/50027	17	1 1/8"	2"	2.25"
94/50032	17	1 1/2"	2.25"	2.50"
94/50021	18	35mm	2.12"	2.25"
94/50041	18	40mm	2.25"	3"
94/50069	19	1 1/4"	2"	2.50"
94/50007	21	1 3/8"	2.12"	2.25"
94/50042	21	45mm	2.25"	3"
94/50043	23	1 1/2"	2.12"	2.25"
94/50009	27	1 3/4"	2.12"	3"
94/60005	6	1"	2.75"	1.375"
94/60033	6	1 3/8"	3.75"	1.375"
94/60001	9	5/8"	2"	1.375"
94/60002	11	3/4"	2"	1.375"
94/60003L	13	7/8"	3"	1.375"
94/60006	14	1 1/4"	3"	1.750"
94/60004	15	1"	3"	1.750"



COUPLINGS

Slip Sleeve / Reducing Adaptor



OEM DYNAMICS

SLIP SLEEVE / REDUCING ADAPTOR

MODEL	MALE SPLINE	FEMALE SPLINE	OVERALL LENGTH
58/03/01369	13T 7/8"	9T 5/8"	1.312"
58/03/01698	14T 1 1/4"	13T 7/8"	1.500"
58/03/20003	13T 1 3/4"	13T 7/8"	1.375"
58/03/20006	13T 1 3/4"	14T 1 1/4"	1.200"
58/03/20007	13T 1 3/4"	21T 1 3/8"	1.200"



COUPLINGS

Clamp Locks



OEM DYNAMICS

WELD HUB

MODEL

NO. TEETH

NOMINAL O.D

84/03/CLB03	13	7/8"
84/03/CLC06	14	1 1/4"
84/03/CLBM04	15	1"
84/03/CLC07	21	1 3/8"
84/03/CLC43	23	1 1/2"



COMPANION FLANGE

MODEL

NO. TEETH

NOMINAL O.D

84/F3CLD08	13	1.750"
84/F3CLB03	13	0.875"
84/F3CLC06	14	1 1/4"
84/F3CLC04	15	1"
84/F3CLC07	21	1.375"
84/F3CLC43	23	1.500"



COUPLINGS

Spline Shafts



DEM DYNAMICS

SPLINE SHAFTS

MODEL	NO. TEETH	NOMINAL O.D	SHAFT LENGTH
94/7005S	6	1"	8"
94/70005	6	1"	10"
94/70001	9	$\frac{5}{8}$ "	6"
94/70003	13	$\frac{7}{8}$ "	6"
94/70008	13	1 $\frac{3}{4}$ "	8"
94/70006	14	1 $\frac{1}{4}$ "	8"
94/70004	15	1"	8"
94/70040	16	2 $\frac{1}{8}$ "	8"
94/70032	17	1 $\frac{1}{2}$ "	8"
94/70007	21	1 $\frac{3}{8}$ "	8"
94/70043	23	1 $\frac{1}{2}$ "	8"
94/70045	24	50mm	203mm
94/70048	26	2 $\frac{1}{4}$ "	8"
94/70009	27	1 $\frac{3}{4}$ "	8"

