

# BELL HOUSING



## DISCLAIMER

- > All performance and specification figures are where possible taken from the latest documentation and may vary from older literature versions.
- > Product photos shown are indicative only. Actual products may differ from that shown.
- > Failure or improper selection or improper use of the products described herein or related items can cause death, personal injury and property damage. Whilst every reasonable effort has been made to ensure that the information contained herein is accurate, no warranty is given that it is free from error or omission. Windust Hydraulic Services Ltd will not accept liability for any injury, loss or damage arising directly or indirectly from any use or reliance on this information.



**HYDRAULIC  
SOLUTION  
SPECIALISTS**

11 Kells Place  
Frankton  
HAMILTON 3204  
New Zealand

P +64 07 847 6888

[www.windusthydraulics.co.nz](http://www.windusthydraulics.co.nz)

# BELL HOUSING

# Index

**PRODUCT**

**BRAND**

**MODEL**

<b>Bell Housing - Petrol Engine</b>	<b>RB Hydraulics</b>	<b>Male Spigot, Female Spigot</b>
<b>Bell Housing - Electric Motor</b>	<b>RB Hydraulics</b>	<b>Electric Motor</b>
<b>Bell Housing - Electric Motor</b>	<b>RB Hydraulics</b>	<b>Modular Base</b>
<b>Bell Housing - Electric Motor</b>	<b>RB Hydraulics</b>	<b>Noiseless Bass</b>
<b>Bell Housing - Electric Motor</b>	<b>RB Hydraulics</b>	<b>Modular Adaptor Flange</b>



# BELL HOUSING

## Petrol Engine



# MALE SPIGOT

MODEL	PUMP MOUNT	ENGINE HP	SPIGOT DIA (mm)	PCD DIA (mm)
<a href="#">RB BHE111C02</a>	GROUP 1 EURO	3 - 5.5	40.3 MALE	92
<a href="#">RB BHE112082A</a>	SAE A	3 - 5.5	40.3 MALE	92
<a href="#">RB BHE112C02</a>	GROUP 1 EURO	3 - 5.5	40.3 MALE	92
<a href="#">RB BHE112C04</a>	GROUP 2 EURO	3 - 5.5	40.3 MALE	92



# FEMALE SPIGOT

MODEL	PUMP MOUNT	ENGINE HP	SPIGOT DIA (mm)	PCD DIA (mm)
<a href="#">RB BHE152082A</a>	SAE A 2 BOLT	7 - 18	146 FEMALE	127
<a href="#">RB BHE152C02</a>	GROUP 1 EURO	7 - 18	146 FEMALE	127
<a href="#">RB BHE152C04</a>	GROUP 2 EURO	7 - 18	146 FEMALE	127
<a href="#">RB BHE172082A</a>	SAE A 2 BOLT	18	163.5 FEMALE	127
<a href="#">RB BHE172C04</a>	GROUP 2 EURO	18	163.5 FEMALE	127
<a href="#">RB BHE223A082A</a>	SAE A 2 BOLT	18+	146.05 FEMALE	196.85 (30/45° OFFSET)
<a href="#">RB BHE223AC04</a>	GROUP 2 EURO	18+	146.05 FEMALE	196.85 (30/45° OFFSET)
<a href="#">RB BHE223C082A</a>	SAE A 2 BOLT	18+	177.8 (7") FEMALE	196.85 (30/45° OFFSET)
<a href="#">RB BHE223CC04</a>	GROUP 2 EURO	18+	177.8 (7") FEMALE	196.85 (30/45° OFFSET)



# BELL HOUSING

## Electric Motor



# ELECTRIC MOTOR

MODEL	PUMP MOUNT	FRAME	Kw
<b>RB BH161C01</b>	GROUP 0.5 EURO	D71	0.25 - 0.37
<b>RB BH161C02</b>	GROUP 1 EURO	D71	0.25 - 0.37
<b>RB BH161C03</b>	GROUP 1.5 EURO	D71	0.25 - 0.37
<b>RB BH20203</b>	GROUP 1.5 EURO	D80/90	0.55 - 1.5
<b>RB BH202C04</b>	GROUP 2 EURO	D80/90	0.55 - 1.5
<b>RB BH202M0204</b>	GROUP 1-2 EURO	D80/90	0.55 - 1.5
<b>RB BH202082A</b>	SAE A 2 BOLT	D80/90	0.55 - 1.5
<b>RB BH25203</b>	GROUP 1.5 EURO	D100/112	2.2 - 4.0
<b>RB BH252C04</b>	GROUP 2 EURO	D100/112	2.2 - 4.0
<b>RB BH252M0204</b>	GROUP 1-2 EURO	D100/112	2.2 - 4.0
<b>RB BH252082A</b>	SAE A 2 BOLT	D100/112	2.2 - 4.0
<b>RB BH25217</b>	GROUP 2 BOSCH 4 BOLT	D100/112	2.2 - 4.0
<b>RB BH303C04</b>	GROUP 2 EURO	D132	5.5 - 9.0
<b>RB BH303C05</b>	GROUP 3 EURO	D132	5.5 - 9.0
<b>RB BH303M0406</b>	GROUP 2-3 EURO	D132	5.5 - 9.0
<b>RB BH303082A</b>	SAE A 2 BOLT	D132	5.5 - 9.0
<b>RB BH303101B</b>	SAE B 2 BOLT	D132	5.5 - 9.0



# BELL HOUSING

## Electric Motor

- > Base Only
- > Adaptor Flange Extra



## MODULAR BASE

MODEL	FRAME	Kw	ADAPTOR FLANGE
<b>RB B300A</b>	D132	5.5 - 9.0	F24A
<b>RB B350A</b>	D160/180	11.0 - 22.0	F24A
<b>RB B400A</b>	D200	30.0	F24A
<b>RB B450A</b>	D225	37.0 - 45.0	F24A
<b>RB B450B</b>	D225	37.0 - 45.0	F34A
<b>RB B550B</b>	D250/280	55.0 - 90.0	F34A



# BELL HOUSING

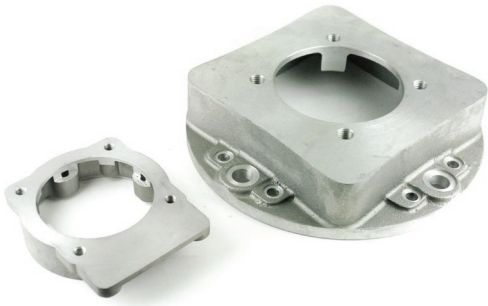
## Electric Motor

- > Base Only
- > Adaptor Flange Extra



## NOISELESS BASE

MODEL	FRAME	Kw	ADAPTOR FLANGE
<b>RB BHP140</b>	D63	0.12 - 0.25	F10A/F10B
<b>RB BHP160</b>	D71	0.25 - 0.37	F10A/F10B
<b>RB BHP200</b>	D80/90	0.55 - 1.5	F10A/F10B
<b>RB BHP250</b>	D100/112	2.2 - 4.0	F10A/F10B
<b>RB BHP300</b>	D132	5.5 - 9.0	F24A
<b>RB BHP350</b>	D160/180	11.0 - 22.0	F24A



# BELL HOUSING

## Electric Motor



# MODULAR ADAPTOR FLANGE

**MODEL**

**PUMP MOUNT**

**SPIGOT (mm)**

<b>RB F10A1MM</b>	<b>GROUP 1.5 EURO</b>	<b>30</b>
<b>RB F10A1PM</b>	<b>GROUP 1 EURO</b>	<b>25.4</b>
<b>RB F10B04</b>	<b>GROUP 2 EURO</b>	<b>36.5</b>
<b>RB F10B080U</b>	<b>GROUP 2 BOSCH 4 BOLT</b>	<b>80</b>
<b>RB F10B082A</b>	<b>SAE A 2 BOLT</b>	<b>82.5</b>
<b>RB F24A03304</b>	<b>GROUP 2 EURO</b>	<b>36.5</b>
<b>RB F24A03305</b>	<b>GROUP 3 EURO</b>	<b>50.8</b>
<b>RB F24A046101B</b>	<b>SAE B 2 BOLT</b>	<b>101.6</b>
<b>RB F24A046101D</b>	<b>SAE B 4 BOLT</b>	<b>101.6</b>
<b>RB F24A046127A</b>	<b>SAE C 2 BOLT</b>	<b>127</b>
<b>RB F24A046127C</b>	<b>SAE C 4 BOLT</b>	<b>127</b>
<b>RB F24A059127A</b>	<b>SAE C 2 BOLT</b>	<b>127</b>
<b>RB F34A046127A</b>	<b>SAE C 2 BOLT</b>	<b>127</b>
<b>RB F34A046127C</b>	<b>SAE C 4 BOLT</b>	<b>127</b>
<b>RB F34A059152F</b>	<b>SAE D 4 BOLT</b>	<b>152.4</b>
<b>RB F34B059165D</b>	<b>SAE E 4 BOLT</b>	<b>165.1</b>

