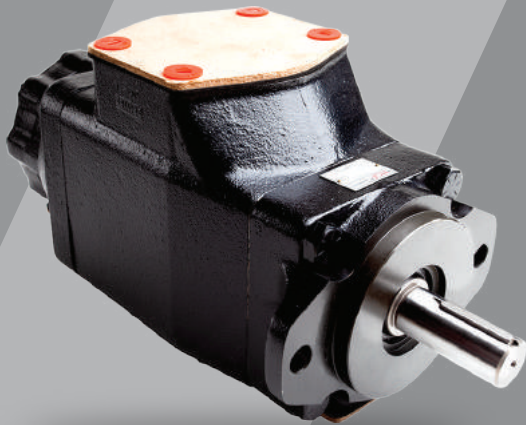




# VANE PUMP

HT6 / HT67 / HT7 Triple Pump



HT6\*R Single Pump



HT6G\* Double Pump



## Fixed Displacement Vane Pump Up to 320 bar (HT6, HT67, HT7 Series)

- Maximum Pressure up to 320 bars.
- Available now for single, double, triple and drive thru pumps series.
- All cartridge kits are bi-directional and tested 100% with individual serial number.
- Available for both mobile and industrial series. Some special mobile pumps and shafts are also available such as :  
HT6G / HT6GCC / HT6CCW / HT6CCMW / HT6CCZ / HT6DCW etc.

HT6 / HT67 / HT7 Double Pump



HVT / HVQT Single Pump



HT6 / HT7 Single Pump



## Fixed Displacement Vane Pump Up to 215 bar (HV, HVQ, HV10, HV20 Series)

- For HV10 / HV20 and HV2010 / HV2020, Maximum Pressure up to 175 bars.
- For HV / HVQ Maximum Pressure up to 215 bars.
- Available now for single, double and drive thru pumps series.
- All cartridge kits are bi-directional and tested 100% with individual serial number.
- Available for both mobile and industrial series. Some special mobile pumps and shafts are also available such as :  
HV210 / HV230 / HV10F / HV10P / HV20F / HV20P etc.

HV / HVQ Double Pump



HV Single Pump



HV Double Pump



### Sole NZ Distributors of HOF Pumps & Motors

Email: sales@windusthydraulics.co.nz

P +64 07 847 6888 M +64 021 865 912 W www.windusthydraulics.co.nz

11 Kells Place, Frankton, HAMILTON 3204, New Zealand

PO Box 13110, Hillcrest, HAMILTON 3251, New Zealand